

CAMSS

*Common Assessment Method for Standards
and Specifications*

interoperable
europe

Tallin Declaration

Overview

The Tallinn Declaration compels the Member States to take steps towards the interoperability by default



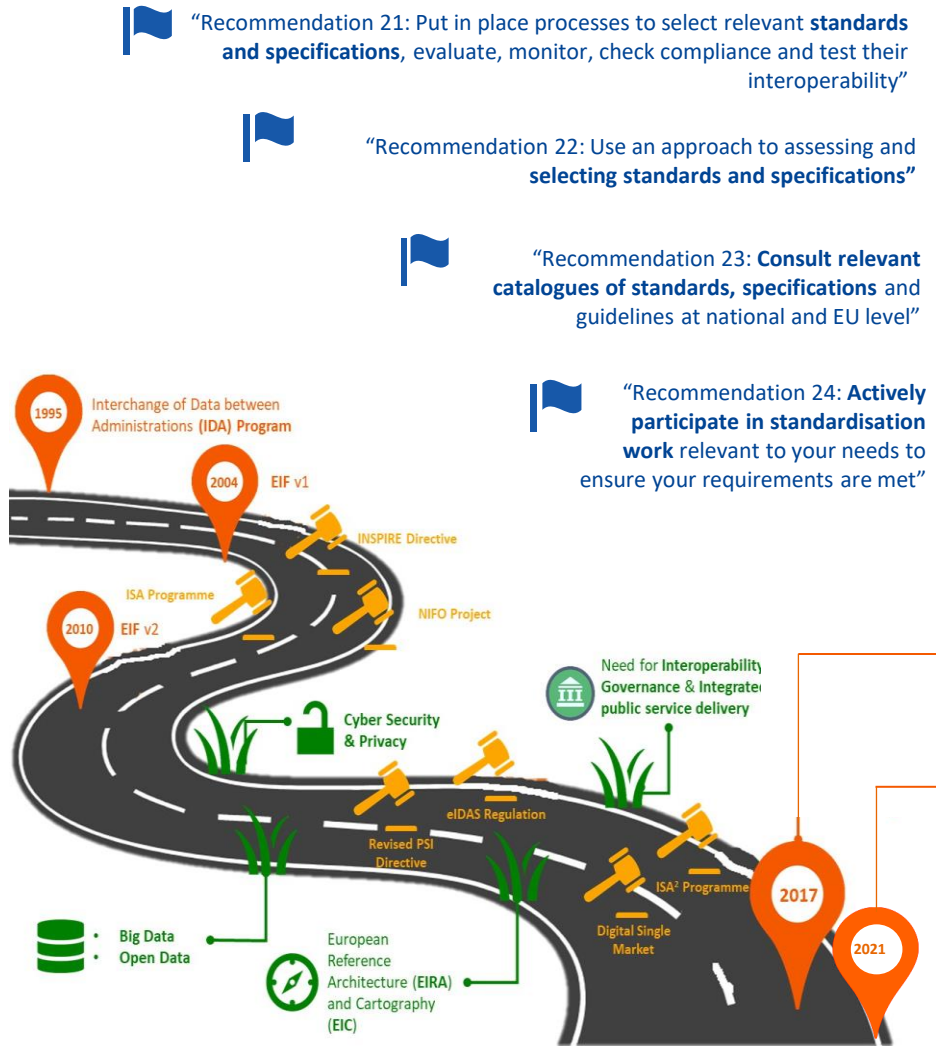
Interoperability by default

“We confirm our commitment to the vision laid out in the **EU eGovernment Action Plan 2016-2020** and in the **European Interoperability Framework** [...] to strive to be open, efficient and inclusive, providing borderless, **interoperable**, personalised, user-friendly, end-to-end **digital public services** to all citizens and businesses – at all levels of public administration.” (p.3)

In this regard, MS will:

- “**Make use** of open source solutions and/or **open standards** when (re)building ICT systems and solutions (among else, to **avoid lock-ins**), including those developed and/or promoted by EU programmes for **interoperability and standardisation**, such as **ISA²**.” (p.6)
- “**Modernise** the design of public services, **procurement** and contracting arrangement to make them compatible with modern and agile ways of developing and deploying digital technology.” (p.7)
- “Increase the **digital leadership skills** among top civil and public servants and digital skills more widely within the public administration at all levels.” (p.7)

EIF Storyline Overview



“Recommendation 21: Put in place processes to select relevant **standards and specifications**, evaluate, monitor, check compliance and test their interoperability”

“Recommendation 22: Use an approach to assessing and **selecting standards and specifications**”

“Recommendation 23: **Consult relevant catalogues of standards, specifications** and guidelines at national and EU level”

“Recommendation 24: **Actively participate in standardisation work** relevant to your needs to ensure your requirements are met”

Recommendations in short

- “Promotes electronic communication among European public administrations by providing a set of common models, principles and recommendations.”
- “Reusability of IT solutions ([...] **standards**) [...] is an enabler of **interoperability** and improves quality because it **extends operational use, as well as saving money and time.** [...] one of the major contributor to the development of a digital single market in the EU.”
- “[...] **Standards and specifications** are needed to enable meaningful information exchange among European public organisations.”

New EIF Public consultation
Gathering stakeholders' views and contributing to the impact assessment and its possible improvement.

New European Interoperability Framework

- 1 revised **Conceptual Model** for integrated public service delivery
- 4 layers of interoperability
- 12 underlying principles
- 47 recommendations for Public administrations

EIF Toolbox

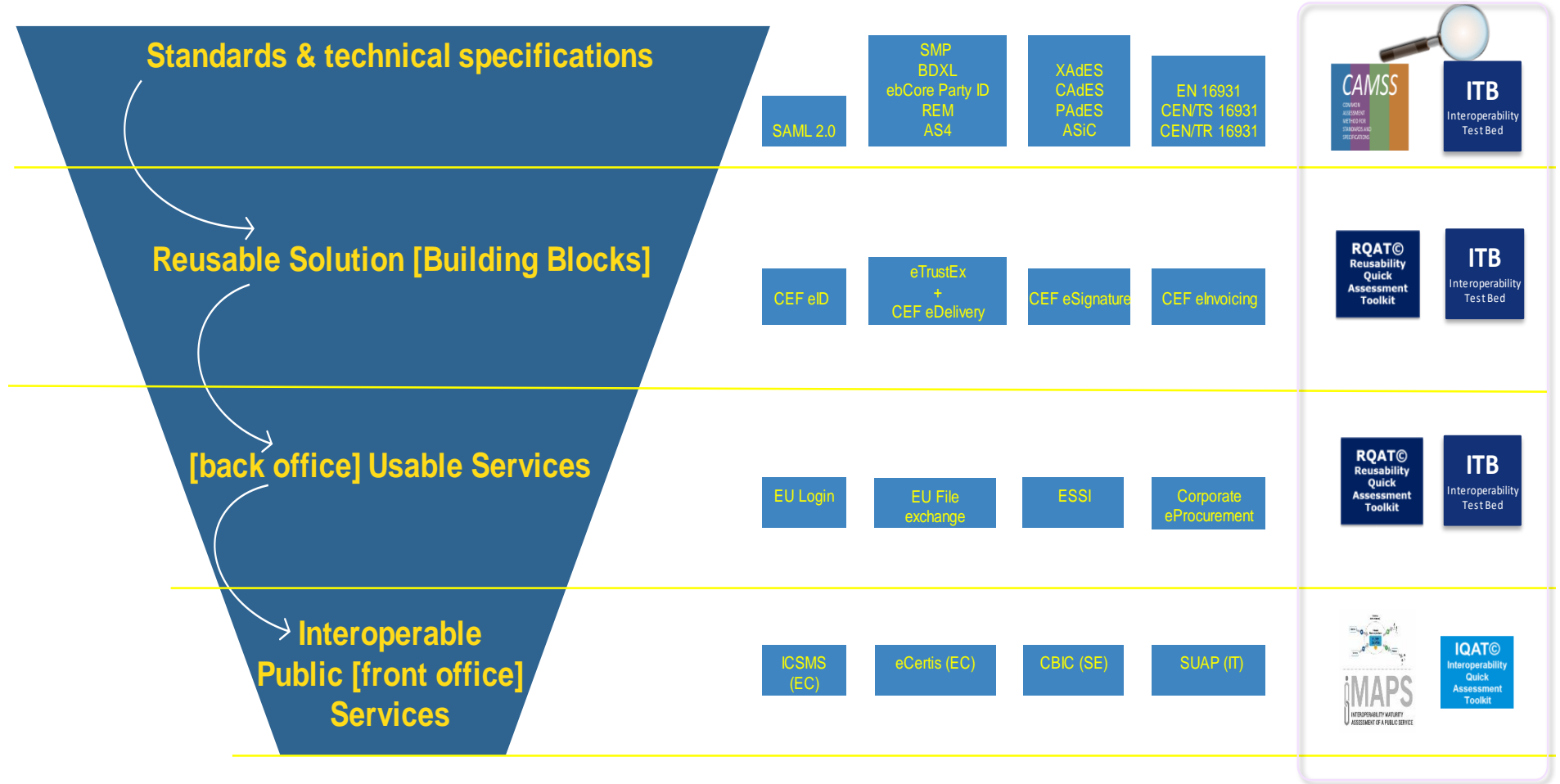
The EIF Toolbox is designed as a guidance for national public administrations to equip them with the tools necessary to align their National Interoperability Frameworks (NIFs) with the European Interoperability Framework (EIF) in order to promote interoperability at national and European level. The structure of the toolbox provides a complete and holistic approach on interoperability and allows users to access information and reusable solutions or components to tackle specific aspects of interoperability when designing a new digital solution.

The information of the EIF TOOLBOX is structured and accessed by the following entry points:



➔ CAMSS is widely acknowledged as a part of the recommended tools.

EIRA Supports EIF Implementation (*)



The Common Assessment Method for Standards and Specifications (CAMSS)

DO YOU STRUGGLE DEALING WITH STANDARDS?



CAMSS Storyline

The context



ISA² Programme: From January 2016 to December 2020, this programme has put in place, supported and operated public services and common frameworks for its main beneficiaries, namely public administrations at EU, national, regional and local level, as well as citizens and businesses interacting with those administrations.



Digital Europe Programme: From Jan 2021 to December 2027, that aims at accelerating the recovery and driving the digital transformation of Europe.



EIF: The Commission adopted the European Interoperability Framework (EIF) on the 16th of December 2010. According to the EIF the "decisions on what formalised specifications and technologies to use to ensure interoperability for European public services should be based on transparency, fairness and non-discrimination. One way to do this is to agree on a common assessment methodology and selection process".



EIRA: The European Interoperability Reference Architecture (EIRA) is an architecture content metamodel defining the most salient architectural building blocks (ABBs) needed to build interoperable eGovernment systems. It is an action created and maintained in the context of the ISA² Programme.

The need

- 1 The business need of cross-Administration and cross-border services require that services can interact with each other with ease and hence avoid creating new electronic barriers between administrations.
- 2 Need for public administrations to engage in public procurement of ICT solutions that require cross-administration or cross-border functionalities (plan interoperability architectures).
- 3 Need for formalised specifications in public procurement to avoid vendor lock-in situations.

What's CAMSS?

CAMSS Overview

CAMSS is an established European guide for assessing and selecting standards and specifications for eGovernment projects. It can be used as a reference when building an ICT architecture and for justifying the selection of standards and specifications. For this purpose, CAMSS offers a set of solutions, assets and specifications.

Benefits of CAMSS



Quality

Increasing transparency, efficiency and accountability in public administrations



Reusability

Reuse existing assessments or specifications already recommended by the EU Member States



Savings

Reduce administrative burden, speed up assessment processes

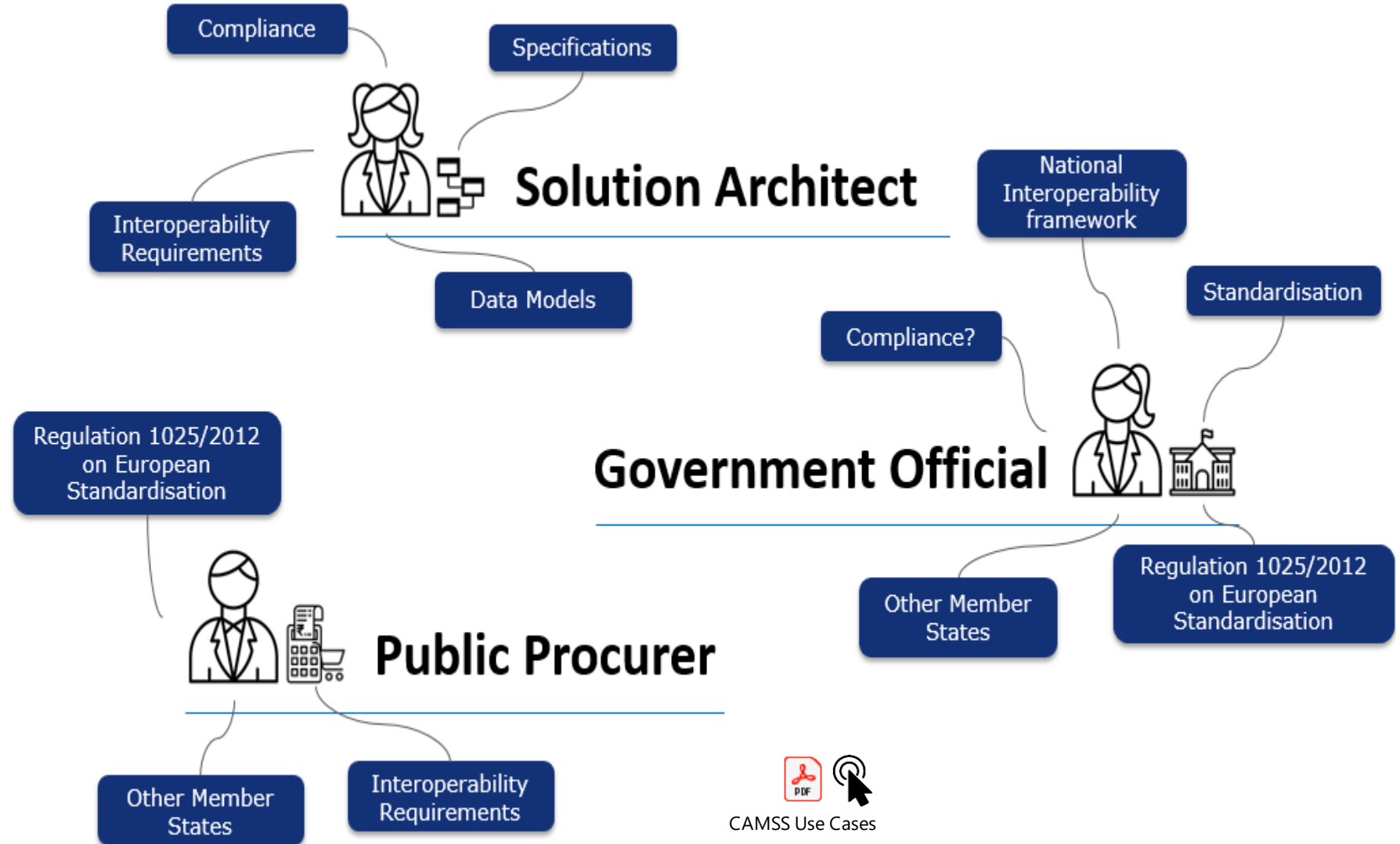


Compliance

Assess the compliance of cutting-edge specifications with reference frameworks

What's CAMSS?

CAMSS Users



What's CAMSS?

CAMSS Solutions

CAMSS Assessment

The **evidence supporting the compliance** of a technical specification with a reference framework

CAMSS Assessment EIF Scenario

This CAMSS Scenario allows to assess the compliance of interoperability specifications with the **EIF**

CAMSS Assessment MSP Scenario

This CAMSS scenario is dedicated to the assessment of formal specifications in the context of **public procurement**

CAMSS Assessment TS Scenario

This CAMSS scenario is dedicated to the **assessment of formal technical specification**, in general terms

CAMSSaaS

(CAMSS as a Service)

A service through which users can request **assessments free of charge**

ELIS

(EIRA© Library of Interoperability Specifications)

A collection of specifications to define the interoperability requirements of a Solution categorised using the EIRA's Architecture Building Blocks

CSSV

(Core Standards and Specifications Vocabulary)

The core vocabulary used to **describe specifications and standards**

CAV

(Core Assessment Vocabulary)

The core vocabulary used to **describe assessments**

CAMSS Ontology

The CAMSS Ontology is a formal description of knowledge as a set of concepts within the CAMSS domain and the axioms connecting its concepts and allowing for logic inferences.

10

ELAP

(EIRA Library of architecture principles)

The EIRA library of architecture principles (ELAP) is intended to direct government organizations in initiating changes and **implementing IT projects**.

CAMSS Assessments

1

USING IT

Do it yourself:

- You have access to **Assessment Resources** - *support to users, improved tools and training resources*

2

RE-USING IT

Reuse Assessments:

- A growing **Collection of Assessments** - *ready for reuse by the Standardisation Community*
- *List to Member States Catalogues of standards*

3

CONSUMING IT

Request the Service:

- **CAMSS as a Service** - *provision of assessments on demand*

CAMSS Assessment EIF Scenario

The CAMSS Assessment EIF Scenario contains different sections according to the insights and recommendations of the European Interoperability Framework (EIF). This CAMSS Scenario allows for the assessment of the compliance of interoperability specifications with the EIF. The objective of the obtained assessment is to determine the suitability of the assessed interoperability specification for the delivery of interoperable European public services.



CAMSS Assessment MSP Scenario

This CAMSS scenario is dedicated to the assessment of formal specifications in the context of public procurement. The criteria used are laid out in the Annex II of the regulation on standardisation 1025_2012 as requirements for the identification of ICT technical specifications for their use in procurement. This scenario is used to support the Multi-Stakeholder platform for European Standardisation on the identification of technical specifications



CAMSS Assessment Technical Specification Scenario

This CAMSS scenario is dedicated to the assessment of formal technical specification, in general terms. According to the regulation on standardisation 1025/2022, a technical specification is a "document that prescribes technical requirements to be fulfilled by a product, process, service or system."



CAMSS as a Service (CAMSSaaS)

“CAMSSaaS is the service provided by CAMSS for the execution and review of assessments on demand”

Request the service at: DIGIT-CAMSS@ec.europa.eu

There are 3 modalities of service:

CAMSSaaS assessment

In this modality the user requests the CAMSS Team to perform the assessment of a technical specification.

CAMSSaaS content review

In this modality the user requests the CAMSS Team to review an already performed assessment. The CAMSS Team will perform an in-depth review of the information, improving the answers of the user when need and challenging them in order to strengthen the quality of the assessment as much as possible.

CAMSSaaS compliance review

In this modality the user requests the CAMSS Team to review an already performed assessment. The CAMSS Team will perform a review of the assessment in order to determine if it has been properly filled, not challenging the actual content of it.

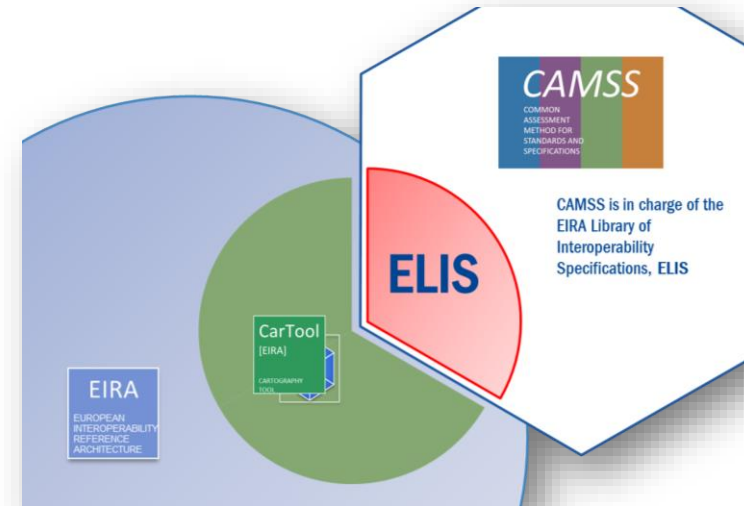
ELIS

EIRA Library of Interoperability Specifications

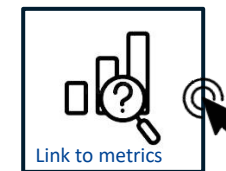
“The ELIS is a modelling tool-agnostic but not architecture-agnostic library of interoperability specification”

The EIRA Library of Interoperability Specifications (ELIS) contains and extensively documents the specifications describing the interoperability requirements of the different EIRA v4.0.0 architecture building blocks.

As an element of the EIRA, the ELIS constitutes a tool for supporting architects on the process of modelling EIRA-based solutions.



The ELIS is implemented by CarTool, and its metrics can be consulted over time in the following link:



<https://joinup.ec.europa.eu/collection/common-assessment-method-standards-and-specifications-camss/solution/elis>

CSSV

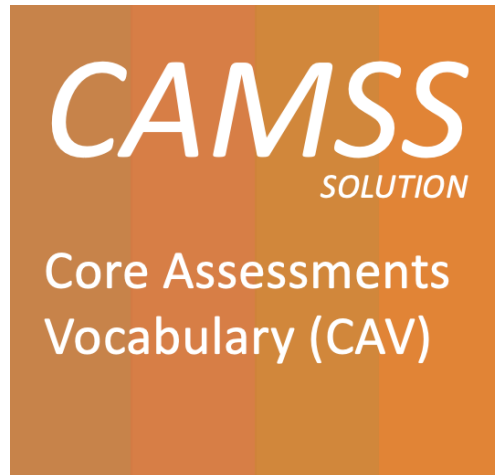
Core Standards and Specifications Vocabulary



The CSSV is the vocabulary used for the information exchange related to standards and specifications amongst software solutions, and also for the description of themselves like EIRA, CPSV, IMAPS, amongst other specifications. The CSSV is the key element for the development of the EIRA Library of Interoperability Specifications (ELIS).

CAV

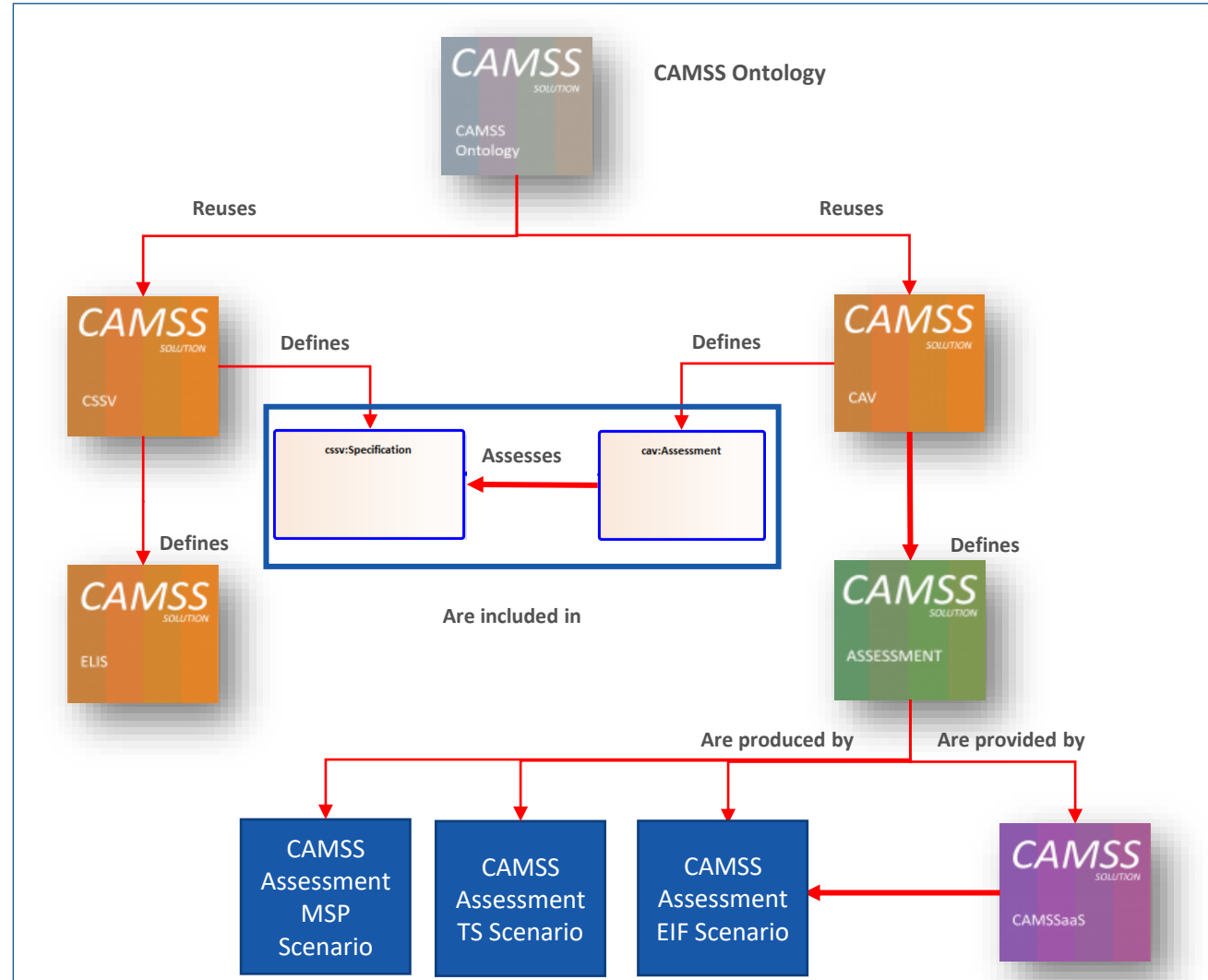
Core Assessment Vocabulary



The Core Assessment Vocabulary represents and defines what an “Assessment” of “assets” is and how to perform the assessment based on “Criteria”. It is a domain-agnostic vocabulary, meaning that it can be used to assess any type of assets.

CAMSS Ontology

The CAMSS Ontology is a formal description of knowledge as a set of concepts within the CAMSS domain and the axioms connecting its concepts and allowing for logic inferences.

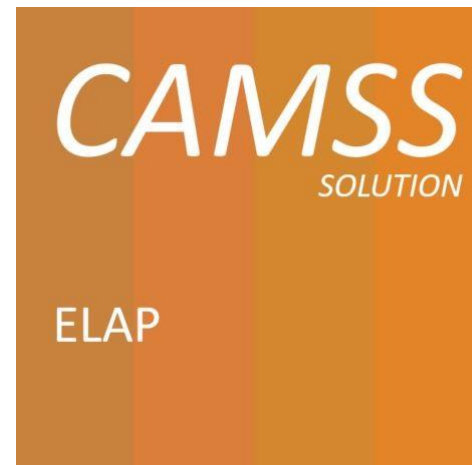


ELAP

European Library of Architecture Principles

The ELAP is a library intended to direct government organizations in initiating changes and implementing IT projects. The principles are described in relation to relevant policy frameworks, established standards, building blocks and examples that are already available, so that they are as recognisable as possible in practice.

This library is implemented in the CarTool in the same way the EIRA Library of Interoperability Specifications (ELIS) is. In addition ELAP will be also accessible through the CAMSS collection in Joinup.



CAMSS Assets



CAMSS List of standards

CAMSS maintains a list with all the standards and technical specifications recommended by the Member States of the EU

CAMSS Assessment Library

Catalogue of the assessments produced through the use of the CAMSS Tools. Each assessment constitutes a CAMSS solution and is fully reusable.

CAMSS Toolkit

Catalogue of tools provided by CAMSS to transform the CAMSS Assessments into RDF format and CAMSS Knowledge Discovery Platform

CAMSS Change and Release Management Process

The objective of the Change Management Process is to formalise how requests for changes and the development of new releases of CAMSS are to be managed.

interoperable europe

innovation ∞ govtech ∞ community

Stay in touch



@ IoP_EU



Interoperable Europe



Interoperable Europe



ec.europa.eu/InteroperableEurope



IoP_Europe_COMM@ec.europa.e
u