

Entities for eGov Interoperability - A Methodological Landscape

Brussels, Feb 2nd 2009

Yorck Rabenstein,]init[



Panel Discussion – what we want to achieve

Dealing with different methodological approaches we can ...

- understand the approach
- understand connections and interrelations to other approaches
- understand reasons for methodological decisions

→ What decisions fit to what kind of conditions / targets?

Panel Discussion – how was it prepared?

In preparing the workshop ...

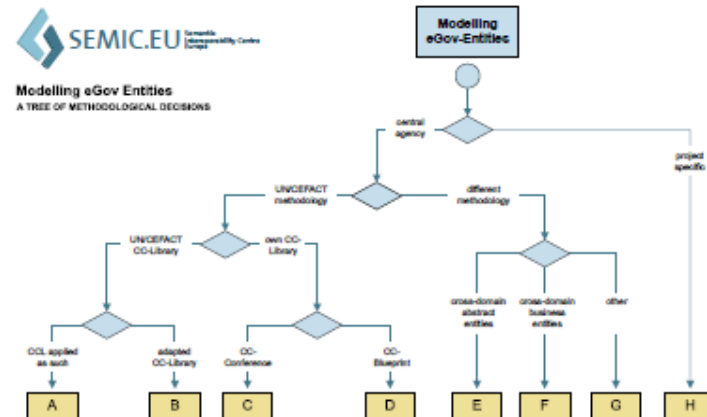
- the SEMIC.EU team had phone interviews with the panelists
- had conversations about their policy and methodology
- we followed empirical lines

→ Important: Pull together actual work and experiences.

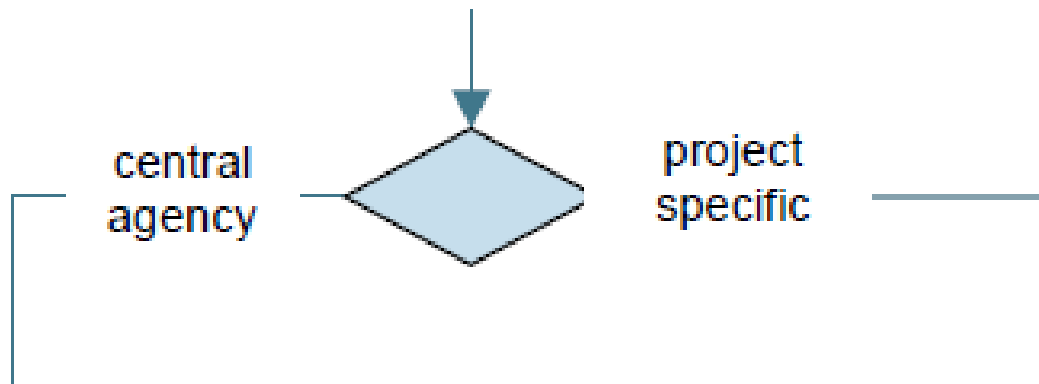
A Space of Methodological Decisions

The result of the phone interviews ...

- are arranged as a decision tree
- reflecting *one* way to pick relevant decisions

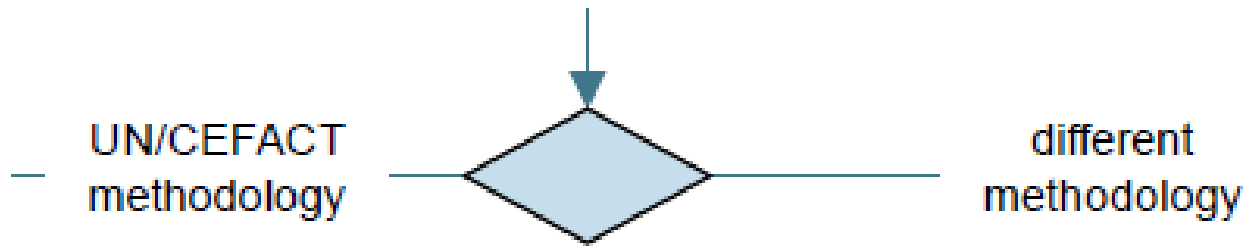


Decision about Centralized Support



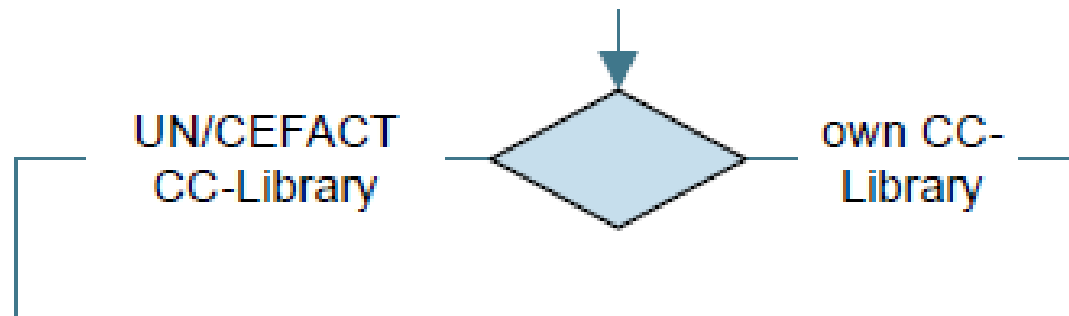
- Is designing of entities done within projects ?
- Or is there a central support with cross-domain focus?

Decision about Core Component Methodology



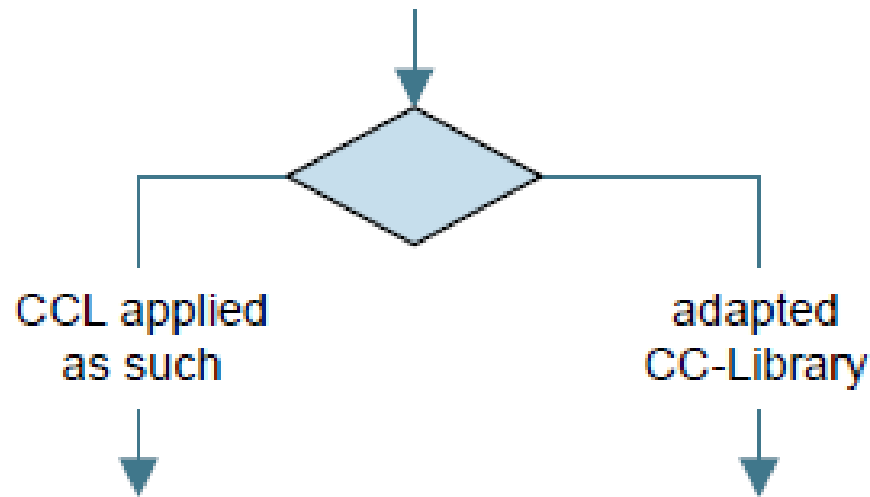
- Is UN/CEFACT methodology applied (as defined in the CCTS)?
- Or is a different methodology followed?

Decision about Core Component Library



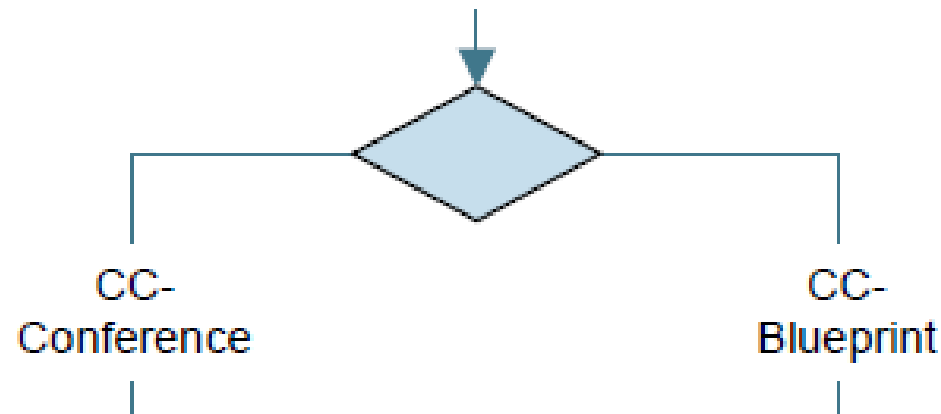
- Is the UN/CEFACT Core Component Library (CCL) applied?
- Or is a CC-library of one's own created?

Decision about Use of a UN/CEFACT CCL



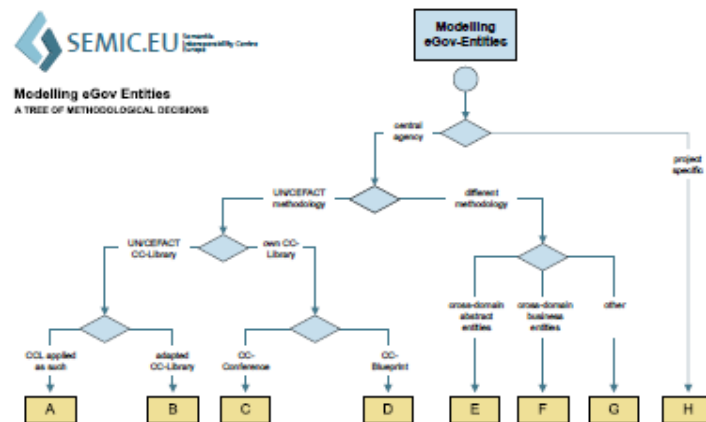
- Is the UN/CEFACT Core Component Library applied as such?
- Or is it adjusted to domestic conditions?

Decision about Derivation of a CCL if created on one's own



- Is it done by domain consultations?
- Or is it done by the central agency stipulating CCs?

This is the Landscape



→ Where are you? Please give a view about your position.

Thank you for listening.
Now it is your turn.



Yorck Rabenstein,]init[

