

# *European INSPIRE Directive and Location Interoperability*

Francesco PIGNATELLI, European Commission JRC  
Lorena HERNANDEZ, European Commission JRC

**ISO/TC211 “Standards in Action” Seminar  
27/11/2020**



**European Location Interoperability  
Solutions for e-Government**

*Enabling Digital Government through  
Geospatial and Location Intelligence*

# Agenda

- Context for European (Location) Interoperability
- ELISE as an enabler of location interoperability in Europe
- INSPIRE and ISO: a close relationship for years
- ELISE Studies & Frameworks & Solutions in the area
- ELISE efforts towards semantic Interoperability

# Context for European (Location) Interoperability – 1/2

EIF interoperability levels



Tallinn Declaration

Building the Data Economy (COM)

AI for Europe (COM)

INSPIRE

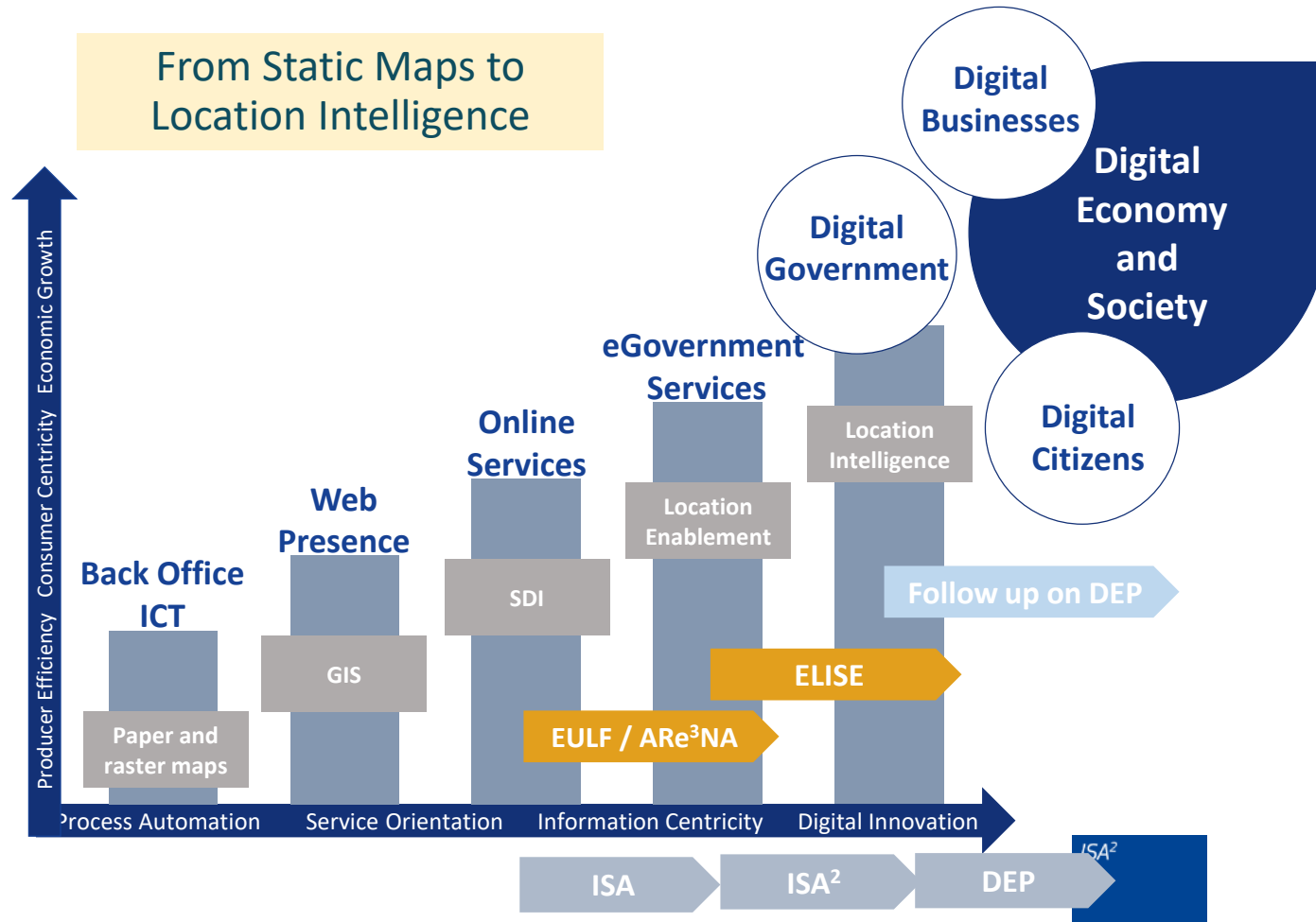
eGov AP

Open Data

European Data Strategy

Digital Europe Programme

# Context for European (Location) Interoperability – 2/2



Digital government is about

- the use of digital technologies
- as an integrated part of governments' **modernisation and transformation** strategies,
- to create public value

It relies on a **digital government ecosystem** comprised of government actors, non-governmental organisations, businesses, citizens' associations and individuals

**Location intelligence** enables new ways of delivering public value and making services and government procedures digital by design

# INSPIRE Directive

The INSPIRE Directive establishes an **infrastructure for spatial information in Europe** to support Community **environmental policies, and policies or activities which may have an impact on the environment.**

Implementing Rules (IR) are adopted in a number of specific areas:

- Metadata,
- Data Specifications,
- Network Services,
- Data and Service Sharing
- Monitoring and Reporting

The Directive addresses [34 spatial data themes](#)

## ANNEX: 1



[Addresses](#)



[Cadastral parcels](#)



[Geographical grid systems](#)



[Hydrography](#)



[Transport networks](#)

## ANNEX: 2



[Elevation](#)



[Land cover](#)



[Administrative units](#)



[Coordinate reference systems](#)



[Geographical names](#)



[Protected sites](#)



[Geology](#)



[Orthoimagery](#)

## ANNEX: 3



[Agricultural and aquaculture facilities](#)



[Atmospheric conditions](#)



[Buildings](#)



[Environmental monitoring Facilities](#)



[Human health and safety](#)



[Meteorological geographical features](#)



[Natural risk zones](#)



[Population distribution and demography](#)



[Sea regions](#)



[Species distribution](#)



[Utility and governmental services](#)



[Area management / restriction / regulation zones & reporting units](#)



[Bio-geographical regions](#)



[Energy Resources](#)



[Habitats and biotopes](#)



[Land use](#)



[Mineral Resources](#)



[Oceanographic geographical features](#)



[Production and industrial facilities](#)



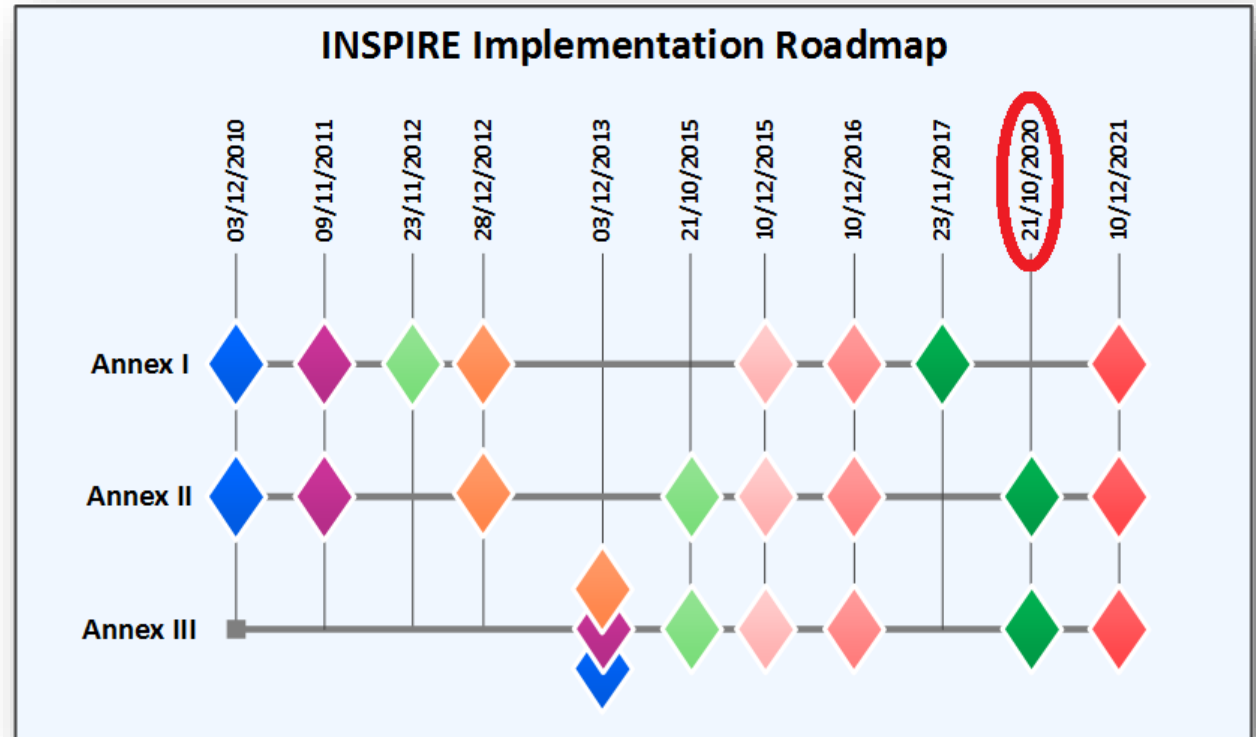
[Soil](#)



[Statistical units](#)

# INSPIRE Directive - Roadmap

<p><b>Discovery metadata</b> shall be available for spatial data sets and services</p>	<p>Spatial data sets shall be available for <b>discovery and view</b> from the INSPIRE geo-portal (data does not yet need to be conformant to IR-ISDSS)</p>	<p>Spatial data sets shall be available for <b>download and transformation</b> (whenever applicable<sup>1</sup>) from the INSPIRE geo-portal (data does not yet need to be conformant to IR-ISDSS<sup>2</sup>)</p>
<p><b>Newly collected and extensively restructured spatial data sets</b> shall be conformant to IR-ISDSS (incl. <b>metadata for interoperability</b>) and available through network services</p>	<p><b>All spatial data sets</b> shall be conformant to IR-ISDSS (incl. <b>metadata for interoperability</b>) and available through network services</p>	
<p><b>All invocable spatial data services</b> shall be conformant to <b>Annex V of IR-ISDSS</b> (incl. <b>metadata</b>)</p>	<p><b>Invocable spatial data services related to newly collected and extensively restructured spatial data sets</b> shall be conformant to <b>Annexes VI and (where practicable) VII of IR-ISDSS</b> (incl. <b>metadata</b>)</p>	<p><b>All invocable spatial data services</b> shall be conformant to <b>Annexes VI and (where practicable) VII of IR-ISDSS</b> (incl. <b>metadata</b>)</p>



Next step:

- **European Data Ecosystems**
- Support to EU Green Deal

# ISO standards as the INSPIRE ‘building blocks’

[19101 Geographic information — Reference model](#)

[19103 Geographic information — Conceptual schema language](#)

[19106 Geographic information — Profiles](#)

[19107 Geographic information — Spatial schema](#)

[19108 Geographic information — Temporal schema](#)

[19109 Geographic information — Rules for application schema](#)

[19111 Geographic information — Referencing by coordinates](#)

[19111-2 Geographic information — Spatial referencing by coordinates — Part 2: Extension for parametric values](#)

[19115 Geographic information — Metadata](#)

[19118 Geographic information — Encoding](#)  
[19119 Geographic information — Services](#)

[19123 Geographic information — Schema for coverage geometry and functions](#)

[19125-1 Simple feature access - Part 1 common architecture](#)

[19127 Geographic information — Geodetic register](#)

[19128 Geographic information — Web map server interface](#)

[19135 Geographic information — Procedures for item registration](#)

[19136 Geographic information — Geography Markup Language \(GML\)](#)

[19139 Geographic information — XML schema implementation](#)

[19144-2 Geographic information - Classification systems — Part 2: Land Cover Meta Language \(LCML\)](#)

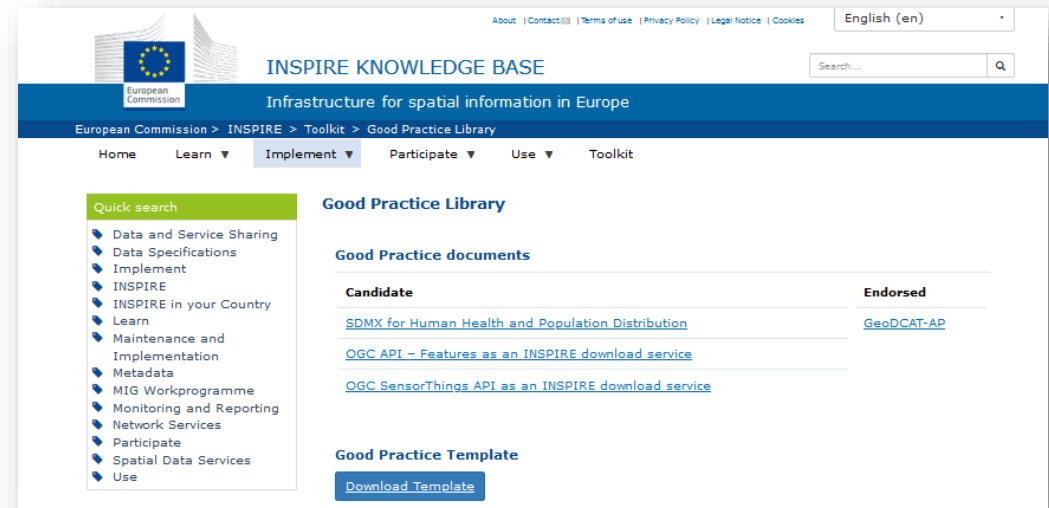
[19156 Geographic information — Observations and measurements](#)

- **ISO standards** underpin the establishment of the **pan-European** data infrastructure as defined by the **INSPIRE Directive**.
- The standards are extensively used for the creation of non-legally binding INSPIRE Technical guidelines documents.
- ISO standards are used as ‘**building blocks**’ for the:
  - encoding of data and metadata,
  - and network services for discovery, viewing and downloading of data

# Benefits for the users

- Some larger scale benefits as seen by the European Commission's JRC:
  - Improved transparency in sharing geospatial data
  - Optimised processes within and between different organisations
  - Easy sharing of data across different borders (e.g. regional, national) and different application domains
  - Better interaction of users and providers of data
  - Minimising the risk of vendor lock-in
  - Standards are a catalyst for data-driven innovation

- INSPIRE implementers are encouraged to consider submitting **Good implementation practices** based on different standards (e.g. ISO) and technologies
  - Details are available at:  
<https://inspire.ec.europa.eu/portfolio/good-practice-library>



The screenshot displays the INSPIRE Knowledge Base website. The header includes the European Commission logo, the text "INSPIRE KNOWLEDGE BASE", and the subtitle "Infrastructure for spatial information in Europe". A search bar is located in the top right corner. The main navigation menu includes "Home", "Learn", "Implement", "Participate", "Use", and "Toolkit". The "Implement" menu is currently selected. On the left side, there is a "Quick search" dropdown menu with various categories like "Data and Service Sharing", "Data Specifications", "Implement", "INSPIRE", "INSPIRE in your Country", "Learn", "Maintenance and Implementation", "Metadata", "MIG Workprogramme", "Monitoring and Reporting", "Network Services", "Participate", "Spatial Data Services", and "Use". The main content area is titled "Good Practice Library" and features a table of "Good Practice documents". The table has two columns: "Candidate" and "Endorsed". Under "Candidate", there are three entries: "SDMX for Human Health and Population Distribution", "OGC API - Features as an INSPIRE download service", and "OGC SensorThings API as an INSPIRE download service". Under "Endorsed", there is one entry: "GeoDCAT-AP". Below the table, there is a "Good Practice Template" section with a "Download Template" button.





# ELISE as enabler of *Location Interoperability* in Europe

European Interoperability  
Programme

**cross-border** and **cross-sector**  
Interoperability solutions

for **public administrations,**  
**businesses** and **citizens**

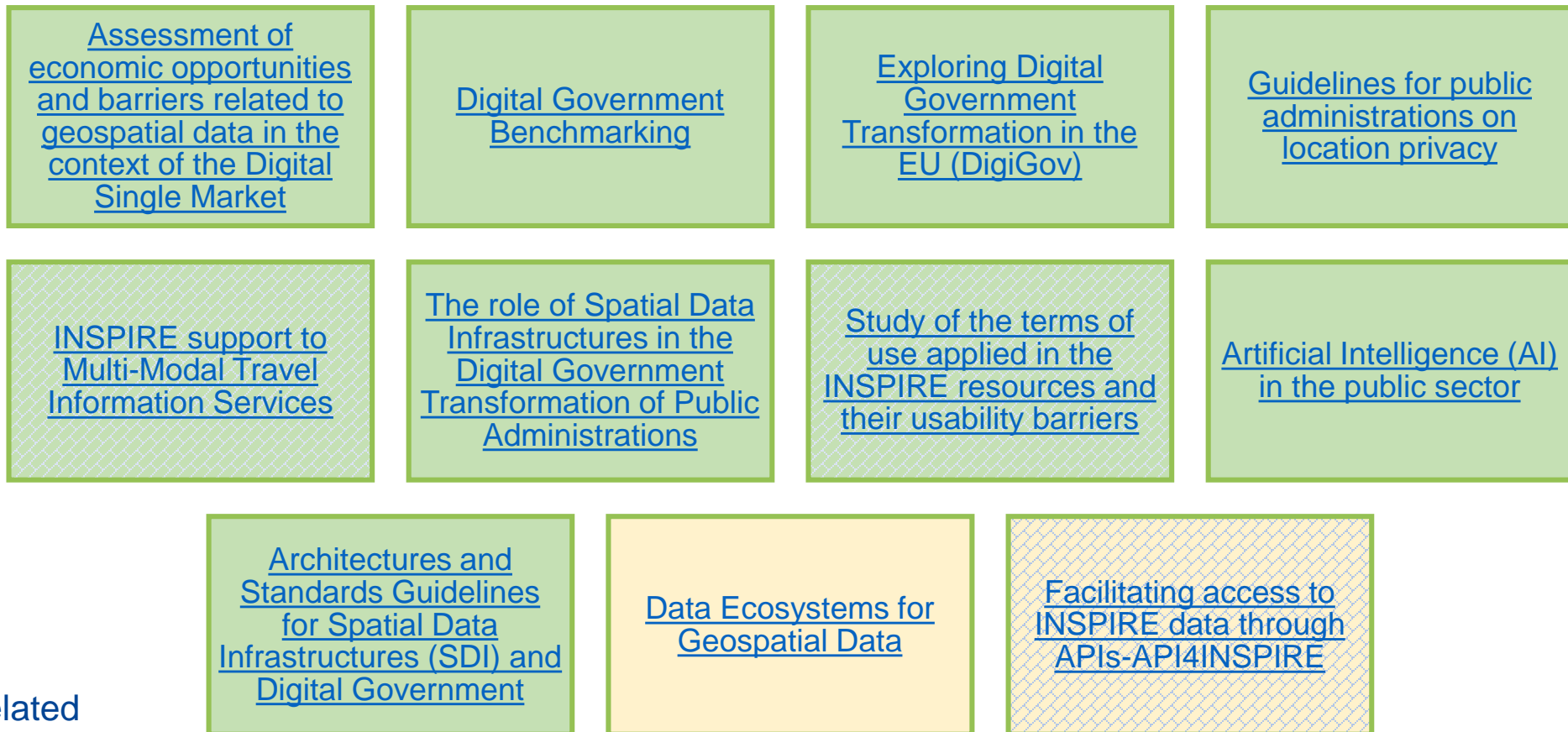
**54** different actions  
tackling **interoperability**  
from different angles

**ELISE** action is the **only**  
action focusing on the  
**location dimension**





# ELISE Studies on Location-enabled Digital Government Transformation



- Performed
- On going
- INSPIRE-related

# ELISE Frameworks and Solutions

## European Union Location Framework Blueprint

Access the  
Blueprint by  
focus area



Policy and strategy alignment



Digital government integration



Standardisation and reuse



Governance, partnerships,  
and capabilities



Return on investment

Access the  
Blueprint by  
role

Policy Maker

Public Service Owner, Manager and  
Implementer

ICT Manager and Developer

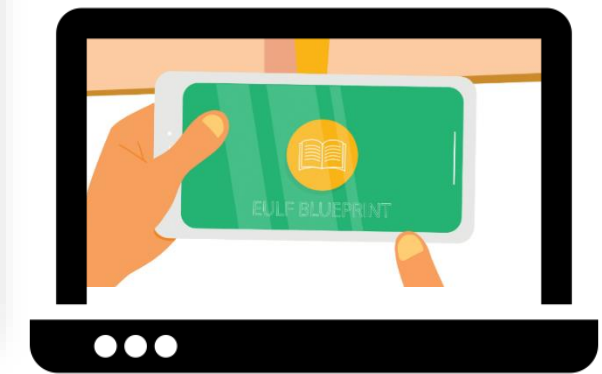
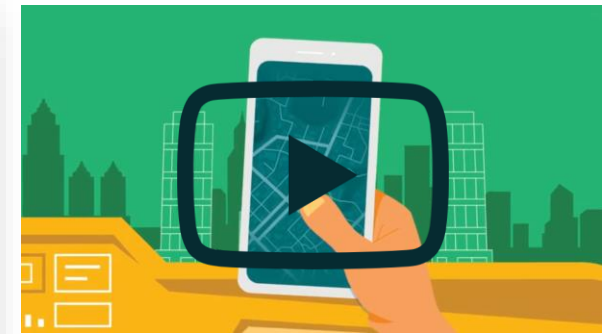
Data Manager / Data Scientist

INSPIRE Data Publisher

Private Sector Product and Service  
Entrepreneur / Developer

**Recommendation 12**

Apply relevant standards to develop a comprehensive approach for spatial data modelling, sharing, and exchange to facilitate integration in digital public services



# ELISE Frameworks and Solutions



ATS & ETS validating many ISO and ISO application profiles

Start test      Status

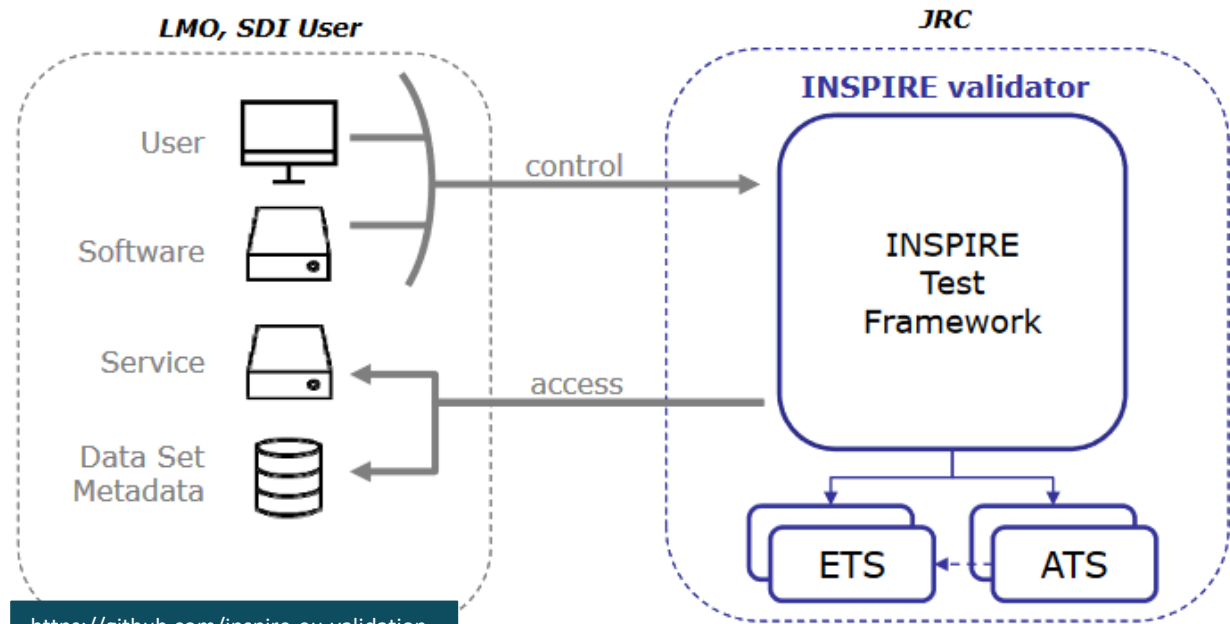
### Executable Test Suites

To start a Test Run, select one or multiple Test Suites with a click on the flip switches on the right-hand side ("use" types and therefore not all Test Suites are combinable for a Test Run. Additional information about a Test Suite will

Filter items...

- View Services - WMS and WMTS (TG version 3.11)
  - Conformance Class: View Service - WMS
  - Conformance Class: View Service - WMTS
- Download Services - WFS and ATOM (TG version 3.1)
  - Conformance Class: Download Service - Direct WFS
  - Conformance Class: Download Service - Pre-defined Atom
  - Conformance Class: Download Service - Pre-defined WFS
- Download Services - SOS (TG version 1.0) - BETA
  - Conformance Class: Download Service - Pre-defined SOS
- Download Services - WCS (TG version 1.0) - BETA
  - Conformance Class: Download Service - WCS Core

<https://inspire.ec.europa.eu/validator>



<https://github.com/inspire-eu-validation>



# ELISE Frameworks and Solutions

## Re<sup>3</sup>gistry

INSPIRE Registry

European Commission > INSPIRE > INSPIRE registry > INSPIRE code list register > Active Well Type > decontamination

**decontamination**

Help us improving the Re3gistry software! Please fill our quick survey at <http://europa.eu/!Bn84Ct>

ID: <http://inspire.ec.europa.eu/codelist/ActiveWellTypeValue/decontamination>  
 This version: <http://inspire.ec.europa.eu/codelist/ActiveWellTypeValue/decontamination:1>  
 Latest version: <http://inspire.ec.europa.eu/codelist/ActiveWellTypeValue/decontamination>

Label: **decontamination**  
 Definition: Well used in remediation schemes that reduce the concentration of contaminants in the environment

Governance level: eu-legal  
 Status: Valid

Themes: Geology  
 Application schema: Hydrogeology  
 Code list: Active Well Type

Other formats: XML XML JSON

<https://inspire.ec.europa.eu/registry/>

### ISO 19135 registration workflow implementation

**Submitting Organisations dashboard**

Action details ← Back to Actions list

Label	Start date	Register	Status	User (owner)	Actions
Action on INSPIRE application schema register	2020-04-17 14:48:16	INSPIRE application schema register	Draft	Test user	<a href="#">Submit to Control Body</a> <a href="#">Discard action</a>

List of changes proposed to this action

Label	Language	Status	User (owner)	Actions
Atmospheric Conditions and Meteorological Geographical Features - test - 1	en	Draft	Test user	<a href="#">Discard proposal</a>
Activity Complex - test 2	en	Draft	Test user	<a href="#">Discard proposal</a>

<https://github.com/ec-jrc/re3gistry>

#### Functionalities:

- User friendly editing interface to add, edit and manage easily the registers and reference codes
- Multi-lingual content support
- Free-text search
- RESTful API with content negotiation
- Externally governed items referenced through URI
- Support for versioning
- ISO 19135 Standard
- RESTful API



# ELISE efforts towards semantic Interoperability 1/2

**Common  
Vocabularies** are  
central to achieve  
**semantic  
interoperability** and  
they allow to be  
**reused in  
innumerable ways**

**Cross-cutting aspects** to  
connect the future **European  
Data spaces**

**Bridging ISO/TC211 / W3C  
worlds**



## ELISE efforts towards semantic Interoperability 2/2

[INSPIRE registry](#)

[Re<sup>3</sup>gistry software](#)

[Spatial Object  
catalogue](#)

[INSPIRE in RDF -  
Linked data  
Ontologies](#)

[INSPIRE in Practice  
platform](#)

[INSPIRE  
Implementation and  
use vocabularies  
based on the GI Body  
of Knowledge](#)

[GeoDCAT-AP  
Specification  
\(Metadata  
management\)](#)

[LD proxy & web  
discoverability](#)

[INSPIRE synonyms  
\(On going\)](#)

Knowledge Graphs  
(next)



[Register here](#)

<https://joinup.ec.europa.eu/node/703535>



# Stay tuned



Join the *ELISE* community in [JoinUp](#)



[@eu\\_location](#)



[eu-location@ec.europa.eu](mailto:eu-location@ec.europa.eu)



[ELISE playlist](#)