



Core Criterion & Core Evidence Vocabulary

Working Group Meeting 1

04/02/2016

Content

1. Practical arrangements
2. Welcome (Vassilios Peristeras, DG DIGIT, ISA Programme of the EU)
3. Introduction of the participants – tour de table
4. The process and methodology (Oriol Bausà)
5. Collaboration in the working group (Oriol Bausà)
6. Use cases (Oriol Bausà)
7. Existing solutions
 - ESPD Exchange model (Marc Christopher Schmidt & Enric Staromiejski, DG Grow)
 - eSENS Business Lifecycle (Loukia Demiri, Hellenic Ministry of Interior and Administrative Reconstruction)
8. Next steps (Oriol Bausà)



How to enter the Virtual Meeting Room?

See https://joinup.ec.europa.eu/asset/criterion_evidence_cv/description

Web connection: http://ec-wacs.adobeconnect.com/criterion_evidence_cv/

Audio connection:

- Go to http://ec-wacs.adobeconnect.com/criterion_evidence_cv/
- Click '**Enter as a guest**', fill in your name and click 'Enter meeting'.
- Click '**ok**' to agree with the Web Conferencing Disclaimer
- Answer '**Start**' to the question: Would you like audio conferencing with this meeting?
- Enter your telephone number and have the system call you
OR dial your Local or International Access Number:

Belgium: +3228081363

France: +33182880967

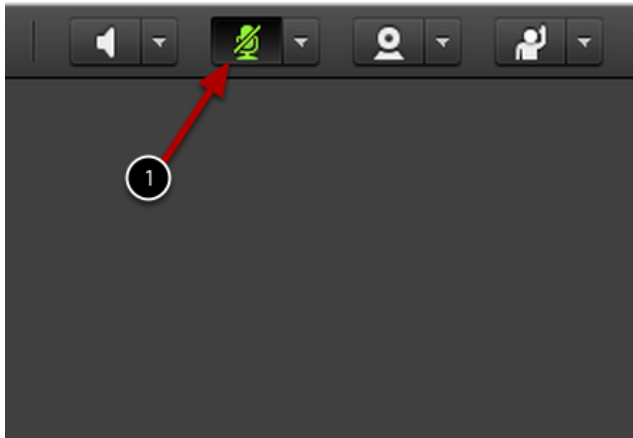
Germany: +498922061600

Luxembourg: +35220880608

United Kingdom: +442033189433

• Dial the Conference Room Number: ***1323004#**

Practical arrangements



Please:

- Mute your mic when not speaking
 - To mute your microphone click the Microphone Icon. When muted, the icon will remain green with a slash.
- Raise your hand to request the floor (and help making the speaker aware of who is raising hands)
- Use the chat box for sharing links and making comments
- **Voting:** use the chatbox (+1 / -1 / abstain)



The work is funded under ISA Action 1.1 of the ISA Programme on improving semantic interoperability in European e-Government systems.



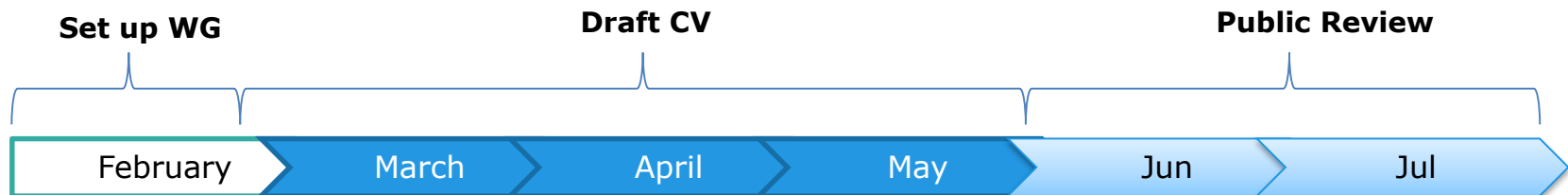
Find out more on <http://semic.eu>

Round table of introductions



Process and Methodology

- 2016-02: Establish a Working Group
- 2016-02: Secure Intellectual Property Rights
 - [ISA Open Metadata Licence](#)
 - [ISA contributor agreement](#)
- 2016-02 to 2016-05: Draft the Core Criterion & Core Evidence Vocabulary
 - 3-4 online meetings of the working group
- 2016-05 to 2016-07: Public review period
- 2016-07: Finalisation of the Core Criterion & Core Evidence Vocabulary:
 - Final meeting of the working group



Roles

Chair

- TBD

Editors

- Oriol Bausà, Invinet
- Nikolaos Loutas, PwC

Collaboration tools

Core Criterion & Core Evidence Vocabulary release page

- Joinup page where the Core Criterion & Core Evidence Vocabulary specification is published

https://joinup.ec.europa.eu/asset/criterion_evidence_cv/description

Core Criterion & Core Evidence Vocabulary mailing list

- Publicly archived mailing list on Joinup
- Used for submitting change requests on the draft specification

http://joinup.ec.europa.eu/mailman/listinfo/criterion_evidence_cv

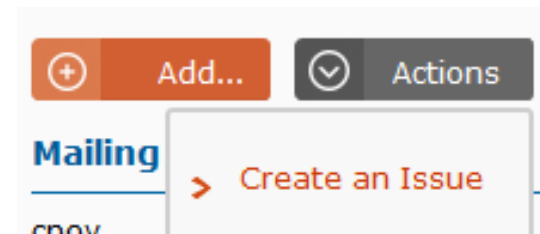
Issue tracker

- Only editors can log issues on the issue tracker (to avoid duplicates)
- WG Members can comment on the issues that are already logged

https://joinup.ec.europa.eu/asset/criterion_evidence_cv/issue/all

Submitting issues

- Use the mailing list for submitting feedback on the draft specification
- Use the following structure:
 - Name of your organisation and description of its expected use of Core Criterion & Core Evidence Vocabulary
 - Version to which the issue applies
 - Description of your issue
 - Your proposed resolution (if available)



Use Cases

Facilitate the development of interoperable information systems

Create a repository of machine-readable reusable criteria

Automate the assessment of criteria

Automate scoring of responses

Promote cross-border participation

Calculating statistics

Create a registry of mappings of criteria

Existing solutions – ESPD

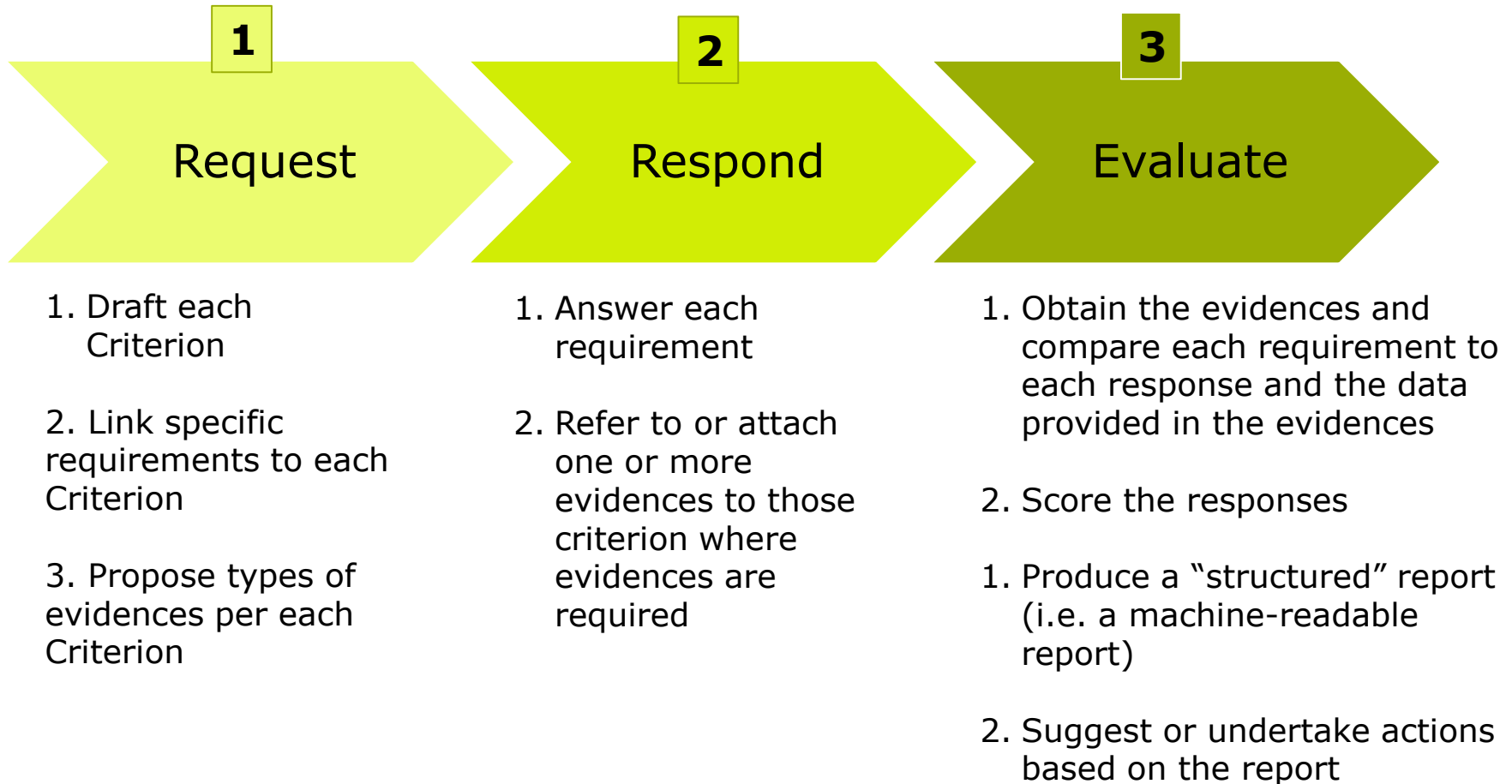


- Models qualification criterion
- Implements criterion responses and evidences
- It is a good starting point

The need for Core Criterion and Evidence

- Criteria are used on a regular basis in all public administrations in many situations and for a large range of goals. A study is needed to identify these situations and goals exhaustively.
- Criteria can be “subjective”, i.e. it needs to be evaluated by humans, or objective (i.e. may be machine-evaluated)
- Either in one case or in the other, the development of software solutions can help:
 - assist the humans to produce evaluation reports and make decisions
 - automate the evaluation and assist humans in decision-making
- The objects of an evaluation can be:
 - Natural and Legal Persons (e.g. matching a CV with many Job Vacancies or vice-versa (Employment and Human Resources Units)
 - Things (e.g. a software product, a specification or a standards, a vehicles, a public service, and a long, long etc.)
 - Concepts (e.g. immaterial criteria to decide whether a data source should become a base registry or not, like the “value” of the data)
- For an optimal development and effective use of criteria editing, responding and evaluating solutions data **MUST** be 100% digital and structured.

The “Criteria life-cycle”



Pipe-lining the "OOP" Once Only Principle

1

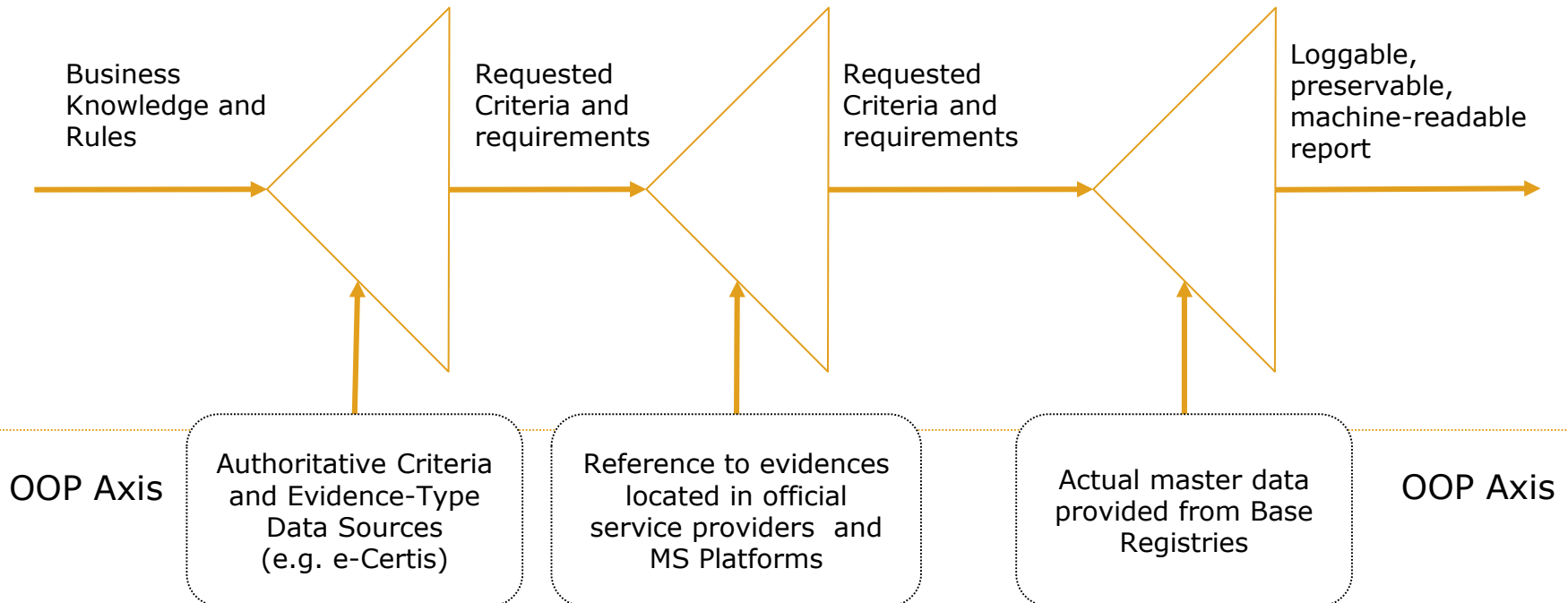
Request

2

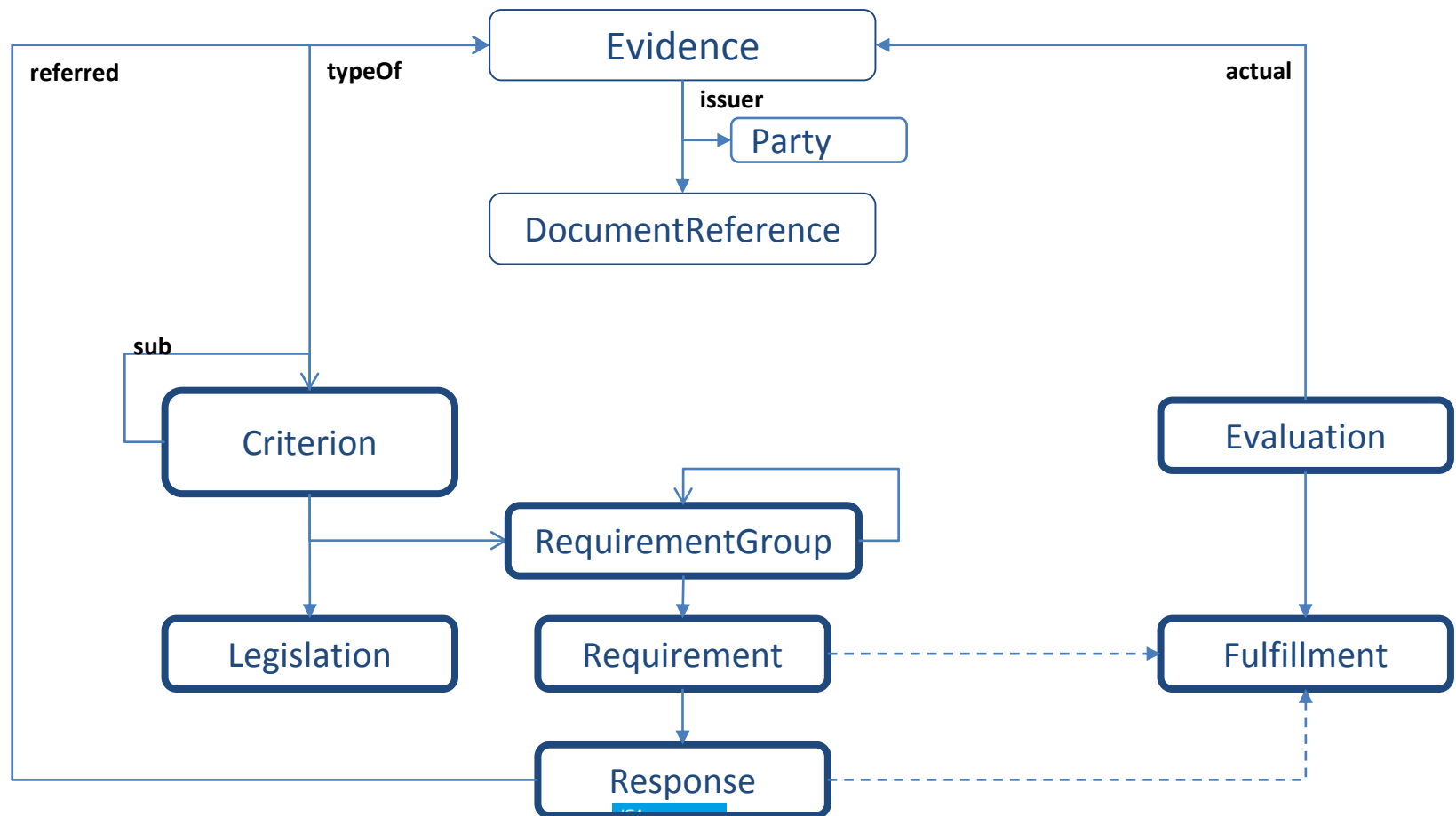
Respond

3

Evaluate



Criterion and Evidence DM (original approach)



Additional proposals (i)

- ❖ The evaluation phase is the most useful part and probably the most complex. Involve MS in its development. Finland is currently approaching the automated evaluation of the exclusion and selection of Economic Operators based on the ESPD Criteria. They are willing to cooperate to develop the Core Criterion and Evidence Data Model (contact point Timo Rantanen, Finnish Gov.)
- ❖ The evaluation phase is relevant in eProcurement for the Awarding phase (the ESPD only covers exclusion and selection criteria).
- ❖ Giampaolo Selitto, Italian Government, identifies a Business Case within e-Sens different from e-Procurement where they're considering the use of the Core Criterion and Evidence Vocabulary

Additional proposals (ii)

- ❖ Propose the development of a “standard” specification for the “Criteria Evaluation Reports” (similarly to the ISO SVRL (Schematron-based Validation Reporting Language), XBRL (eXtensible Business Reporting Language), etc.

- ❖ Possible candidate Actions to reuse and test the CCEV inside ISA:
 - ❖ CAMSS
 - ❖ Share and Re-use
 - ❖ IMM
 - ❖ Guidelines methodology
 - ❖ Other, for sure



Use of the CCEV by the ESPD

- Current developments:
 - Development of the online ESPD Service (in production)
 - Definition of the Core Criterion and Core Evidence Vocabulary need in e-Certis and ESPD
 - UML conceptual diagrams
 - XSD Schemas and XML samples (based on UBL-2.1)
 - XML Implementation rules
 - Code Lists, Identifiers and Taxonomies (XLS, GC, RDF formats)
 - The ESPD Service imports and exports the ESPD based on GROW's XSD Schemas
- On-going:
 - Guidelines for the XML implementation
 - Business Rules implementation (ISO Schematron and SVRL)
- Other initiatives currently connected to the ESPD-defined Core Criterion and Core Evidence Vocabulary:
 - e-Sens
 - DIGIT (Grant Management service, e-Prior)
 - CEN/BII Workshops
 - OASIS UBL (has included the CCEV in the new UBL-2.2 release due in 2016)

Existing solutions - eSENS



- Context of Business Lifecycle domain
- Maps requirements and evidences between Greek, Spanish and Polish activity registration procedures for sanitary and tourism services

WP 5.4 Business Lifecycle Domain – Work on Semantics

Semantics in the eSens Business Domain Lifecycle – Activity Registration UC

- Scope: how to make the required documents clear during cross border activity registration
- 3 countries - two activities:
 - Greece, Poland, Spain
 - Provision of Tourism Services - Provision of Medicine Services
- ISA CPSV-AP (Core Service Catalogue Application Profile) model as basis
- Bilateral pairs of requirements (criterion) – evidences
- Moving towards a consolidated list of requirements
- Integration to eCERTIS
- Problems faced:
 - Misunderstanding of requirement – a number of negotiations needed
 - Lack of evidences
 - Disagreement on the necessity of a requirement

Input Class – Model according to CPSV-AP

Input	
Input	Identifier
Input	Name
Input	Description
Input	Type
Input	Related Documentation

Example – bilateral mapping (tourism ES evidences to GR criterion)

		Target Country Criterion	Originate (applicant') Country Evidences
Input	Identifier	2.	
	Name	Copy of criminal record for general use	Copy of criminal record for general use
	Description	Copy of criminal record for general use issued during the last three months, showing that the applicant has not been irrevocably convicted of a felony or of a series of specifically mentioned misdemeanours (theft, embezzlement, fraud, blackmail, forgery, counterfeiting, grievous bodily injury and violations of drugs, customs and vice-related legislation).	In Spain there is a criminal record document for general use, showing that the applicant has or not criminal records
	Type	Certified physical copy of the original document	
	Related Documentation		

Next steps

- WG member to sign the [Contributor Licence Agreement](#) by **15 February**
- First draft of the Core Criterion & Core Evidence Vocabulary specification by **7 March**
- WG members to review the first draft by **22 March**
- WG members to submit issues via the mailing list by **11 April**
- Proposed dates for next two meetings – Please indicate your availability!
 - 2nd WG virtual meeting: **14 March** 2016 @ 10:30 CET
 - 3rd WG virtual meeting: **25 April** 2016 @ 10:30 CET
- Editors to produce second draft by **2 May**

febrer

dl	dt	dc	dj	dv	ds	dg
1	2	3	4	5	6	7
8	9	10	11	12	13	14
15	16	17	18	19	20	21
22	23	24	25	26	27	28
29	1	2	3	4	5	6

març

dl	dt	dc	dj	dv	ds	dg
29	1	2	3	4	5	6
7	8	9	10	11	12	13
14	15	16	17	18	19	20
21	22	23	24	25	26	27
28	29	30	31	1	2	3

abril

dl	dt	dc	dj	dv	ds	dg
28	29	30	31	1	2	3
4	5	6	7	8	9	10
11	12	13	14	15	16	17
18	19	20	21	22	23	24
25	26	27	28	29	30	1

maig

dl	dt	dc	dj	dv	ds	dg
25	26	27	28	29	30	1
2	3	4	5	6	7	8
9	10	11	12	13	14	15
16	17	18	19	20	21	22
23	24	25	26	27	28	29
30	31	1	2	3	4	5

Save the date!



12 May 2016
Rome – Italy

Stay tuned at

<https://joinup.ec.europa.eu/node/148436>



Project Officers Vassilios.Peristeras@ec.europa.eu
Athanasios.Karalopoulos@ec.europa.eu

Visit our initiatives



Get involved

 Follow [@SEMICEu](#) on Twitter

 Join the [SEMIC](#) group on LinkedIn

 Join the SEMIC community on Joinup