



Access to Base Registries

Improving national and cross-border access to government data

WEBINAR ON THE FEASIBILITY OF THE EUROPEAN REGISTRY OF BASE REGISTRIES

21 June 2018, Brussels

AGENDA



INTRODUCTION



THE EUROPEAN REGISTRY OF BASE REGISTRIES



THE ONCE ONLY PRINCIPLE (TOOP)



MEMBER STATES PRESENTATIONS



Q&A – OPEN DISCUSSION

AGENDA



INTRODUCTION

a) The context of the workshop



THE EUROPEAN REGISTRY OF BASE REGISTRIES

b) ABR in a nutshell



THE ONCE ONLY PRINCIPLE (TOOP)

c) Action challenges



MEMBER STATES PRESENTATIONS



Q&A – OPEN DISCUSSION





“Reliable sources of basic information on items such as persons, companies, vehicles, licenses, buildings, locations and roads” (EIF)

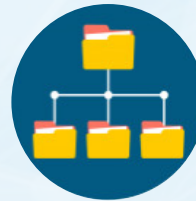
The Access to Base Registries actions aim to:



Modernise public administrations, achieve cross-border interoperability and facilitate easy interactions with citizens



Minimise the number of interactions needed between administrations, businesses and citizens by promoting the **‘Once-Only’ principle**



Improve interoperability between base registries, cross-border and cross-sector, at a MS and EU level



Facilitate acceleration in new designs and increase efficiency via interoperability



Allow savings via rationalisation and reusability



ABR challenges



Inexistence of guidelines that bring together recognized best practices to be further promoted and exchanged among Member States

Absence of an overview and analysis of the **current state-of-play** on base registries' access and interconnection and on the implementation of the OOP at MS level.

Lack of an overview of existing solutions that could be reused by other countries to enable the access to and interconnection of base registries

Inexistence of a Framework for Base Registry Access and Interconnection including all the different activities associated with master data management.

AGENDA



INTRODUCTION



THE EUROPEAN REGISTRY OF BASE REGISTRIES



THE ONCE ONLY PRINCIPLE (TOOP)



MEMBER STATES PRESENTATIONS

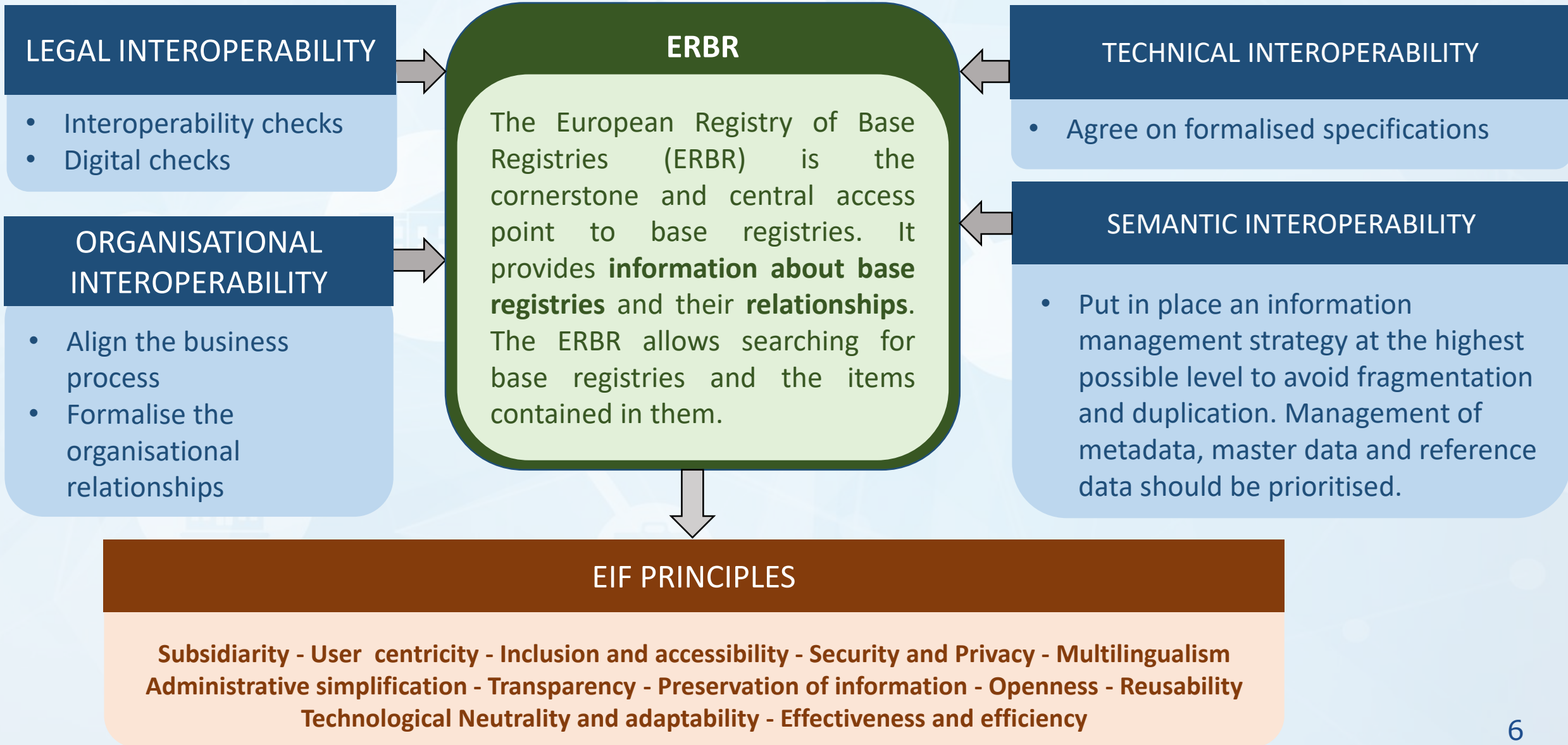


Q&A – OPEN DISCUSSION

- a) The European registry of Base Registries
- b) Inspirational registries of registries
- c) Which metadata for Base Registries description?

THE EUROPEAN REGISTRY OF BASE REGISTRIES (ERBR)

An EIF Implementation





The Stelsecatalogus

Stelsecatalogus is a data catalogue, providing insight on the data in registers, what they mean and how they are interconnected. More specifically, the Stelsecatalogus describes the structure of the System of Base Registries and their definitions.



The Croatian Metaregistry

The Metaregistry functions as a communication and collaboration tool for requesting and granting access to data. It contains detailed information on registers, as well as on the data within them which are in turn made available to users through a single point.



INSPIRE Registry of Registries

The Register of Registers (RoR) is the central access point to the federation. It provides information about the registers included in the federation and the relationships between them, and allows searching for registers and the items contained in them. The RoR can be accessed using the RoR's graphical user interface or API, both of which are publicly accessible.



The Stelsecatalogus

The Stelsecatalogus is a registry of base registries containing insights on the data contained within base Registries, the meaning of the data and the way the base registries are connected to each other. The Stelsecatalogus has many specificities which we can get inspired from.

- The Stelsecatalogus indicates the legislation which is at the origin of the base registries.
- The current System Catalog target users are **Policy makers and legislative lawyer**.
- **20 connections between the various base registries in the Netherlands.**
- The data is published according to the principles of Linked Data.

[Search for terms and data](#) [Contact](#)

[Home](#) > Searching for terms and data

Search for terms and data

You can search directly for concepts and data within the System catalog. To do this, enter the concept or information you have requested.

If you want to search only for authentic data, tick the "authentic" box.

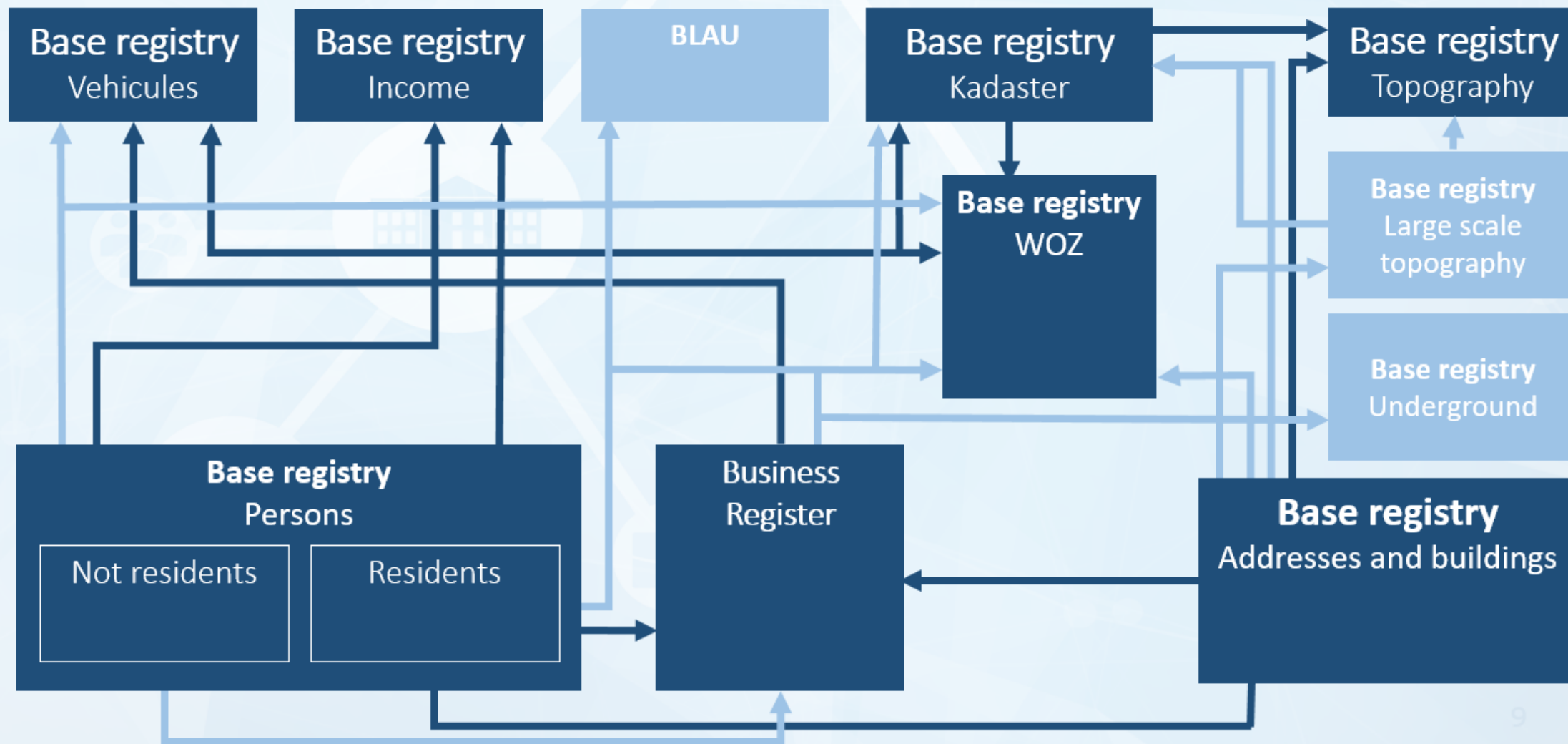
If the concept or information you have requested is not included in the System Catalog, you will be referred to the registration catalog.

Because regular expressions can be used, it is not possible to search for words between the characters (s). This can be avoided by adding a backslash, such as: \ (en \)

Search	<input type="text" value="p "/>
	Birthplace Partner (Partner) (BRP)
	Name public space (Designation WOZ object) (WOZ)
	City name (WOZ-object designation) (WOZ)



The Stelsecatalogus



- The Croatian Metaregistry is a public registry that forms part of the state information infrastructure and serves to manage the system of public registries. It contains detailed information about public registries and data is available to users through a single site.
- It gives an overview of established public registries, the type of data they collect, and the ways of connecting them to other systems, taking into account compliance with the applicable regulations on the protection of personal data, data confidentiality and the right to access information.

Registry data

id	Name of the data	Description	Type	Authenticity	Source	Semantic concept	Classification	codebook	Lenght	Maximum value	cardinality	Management of	Guide to	Personal information	Secrecy
222/484/78/1	ID	Spatial unit identifi	INT	That										It's not personal inf	Unclassified
222/484/78/2	JED_ID	Unique spatial unit	VARCHAR	That										It's not personal inf	Unclassified
222/484/78/3	IME_PJ	Spatial unit name (VARCHAR	That										It's not personal inf	Unclassified
222/484/78/4	BR_SIF_VRSTE_F	Numerous spatial u	INT	That										It's not personal inf	Unclassified
222/484/78/5	VRSTA_PJ	Type of spatial unit	VARCHAR	That										It's not personal inf	Unclassified

1 2 3 4 5 6



INSPIRE

Register Federation

[European Commission](#) > [INSPIRE](#) > [Register Federation](#) > [Registries](#)

[Registries](#) [Registers](#) [Relations](#) [Federated search](#) [Help](#)

[Login](#)

Registries

Filter Label	Filter Publisher	Filter URI
Label	Publisher	URI
Système de publication de registres de l'IDG française	BRGM	http://registre.geocatalogue.fr/registry
INSPIRE registry	European Commission, Joint Research Centre	http://inspire.ec.europa.eu/registry
Spanish Registry - Test version	Instituto Geográfico Nacional	http://www.ideo.es/register-inspire
EEA Data Dictionary vocabularies	European Environment Agency	http://dd.eionet.europa.eu/vocabularies
Austrian INSPIRE registry	CCCA Data Centre	http://registry.inspire.gv.at
Lithological Classification Austria - extended values	Geological Survey of Austria	http://resource.geolba.ac.at/lithology/0
IUGS CGI Geoscience Vocabularies for Linked Data	Geoscience Terminology Working Group (GTWG)	http://resource.geosciml.org/

The INSPIRE Registry of Registries

The INSPIRE registry federation is a distributed federation of registries related to the INSPIRE Directive.

- They provide best practices inspired by the Web Best Practices document [**W3C DWBP**] published by **W3C**.
- They describe **the requirements that a resource shall fulfil in order to be part of the INSPIRE Registry Federation**. Also, they require/recommend *fields* to be provided for each of the classes and the *format* to create the exchange documents: **Descriptors**.
- **The descriptors** are meant to provide metadata and data about the registries and registers to be included in the federation in a RDF/XML document that is publicly available through an http URI.
- The INSPIRE Registry of Registries differentiates Registries and Registers and indicates the relations between base registries.
- The W3C Data Catalog vocabulary (**DCAT**) is used to model the entity registry (dcat:Catalog) and the W3C Simple Knowledge Organization System (**SKOS**) is used to model the entity register (skos:ConceptScheme) and item (skos:Concept).

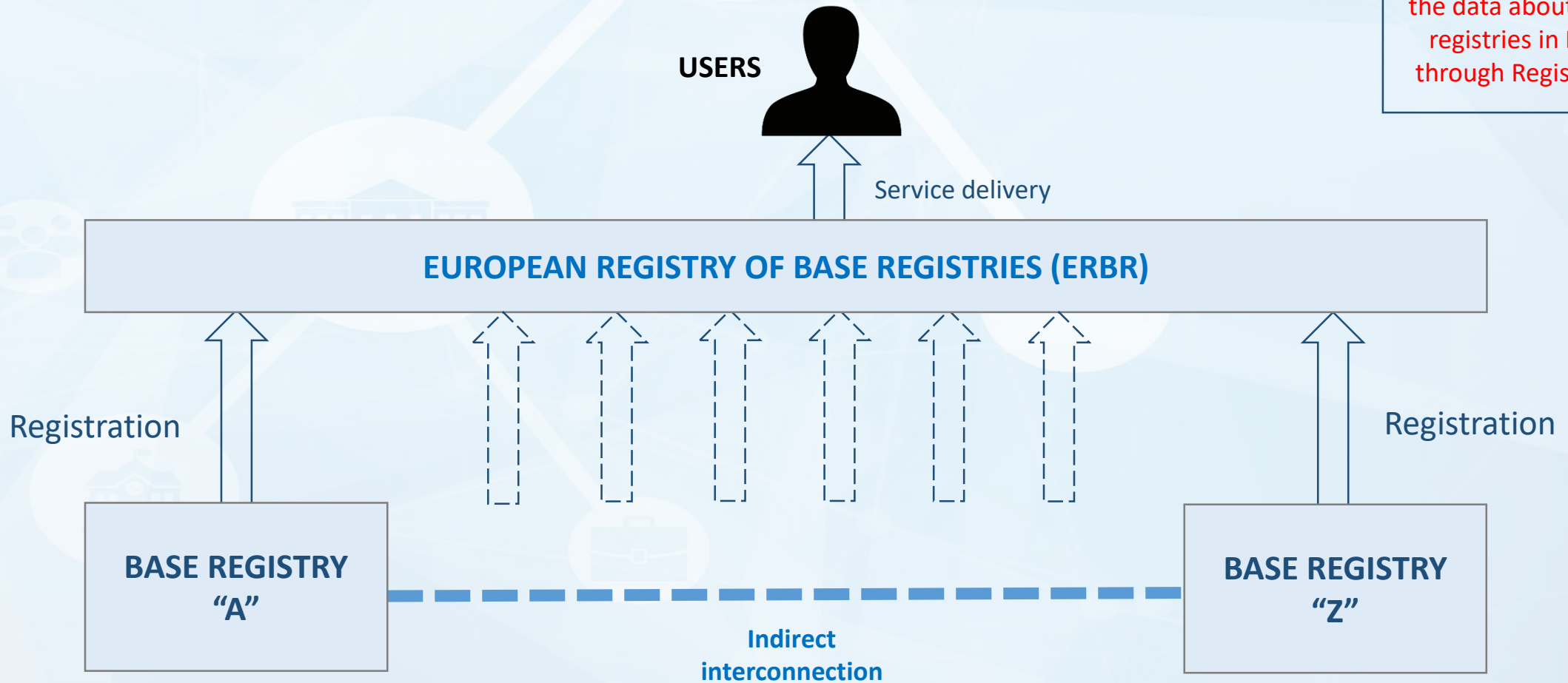
Relations

Filter Local ID	Filter Subject	Filter Predicate	Filter Object
Local ID	Subject	Predicate	Object
0366cdb5165707f0e69e957555b597ca	Spanish Registry - Test version - Building Nature	relies on	INSPIRE registry - Building Nature
331dc814df2063219a81b18a825b24cc	Spanish Registry - Test version - SIOSEValue	relies on	INSPIRE registry - Land Cover Class
4a08196ef68976c0b5ba460cff80aa86	EEA Data Dictionary vocabularies - Corine Land Cover	relies on	INSPIRE registry - Land Cover Class
8eef7253511d0c49b66ce085db9b97e6	Spanish Registry - Test version - CODIIGValue	relies on	INSPIRE registry - Land Cover Class
aef98c4dee42071deec155f0185c9cd8	Spanish Registry - Test version - Aerodrome Type	relies on	INSPIRE registry - Aerodrome Type
b5a5b92eea7f0204599326cc3a211425	Austrian INSPIRE registry - LISA Land Cover Class	relies on	INSPIRE registry - Land Cover Class
dcca808e5ae2816c7b532fe68166fff0	EEA Data Dictionary vocabularies - DesignationSchemeValue	relies on	INSPIRE registry - Designation Scheme

THE EUROPEAN REGISTRY OF BASE REGISTRIES - CATALOGUE

SCENARIO 1

A Registry of Base Registries



Is it feasible to gather the data about all base registries in Europe through Registration?

SCENARIO 1

A Registry of Base Registries

USERS



Service delivery

Are the Base Registries Authorities ready to provide a web service?

EUROPEAN REGISTRY OF BASE REGISTRIES (ERBR)

Secure Data Exchange/Management

Requires technical interoperability

Direct

interconnection
(Data Consumption)

Direct

interconnection
(Data Consumption)

BASE REGISTRY
"A"

Indirect
interconnection

BASE REGISTRY
"B"

SCENARIO 1

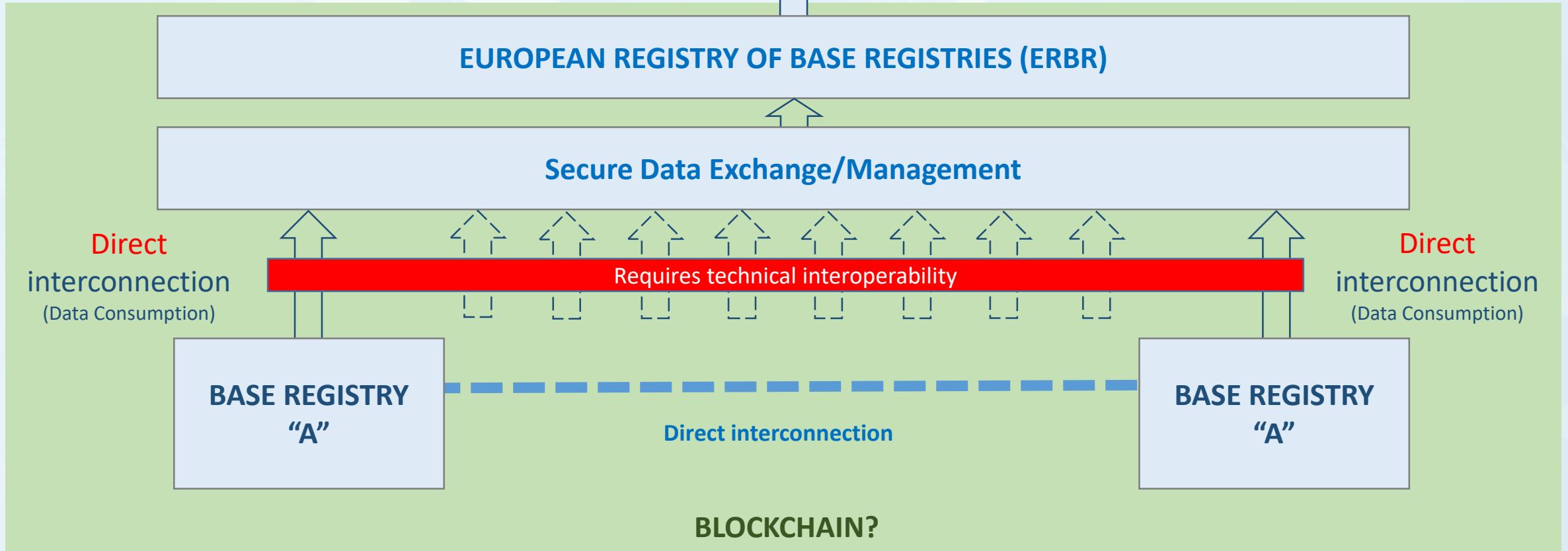
A Registry of Base Registries

USERS



Service delivery

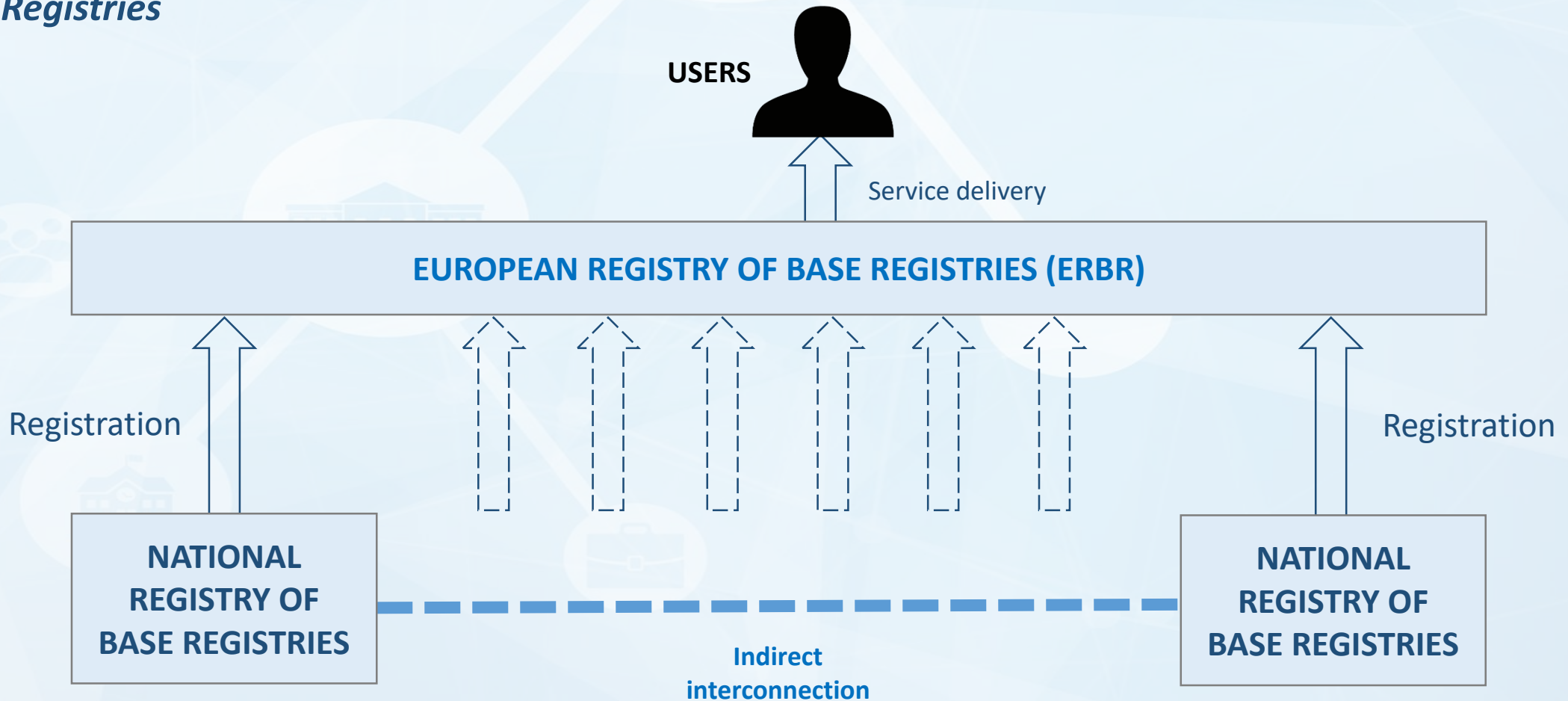
Is it realistic to expect all the base registries authorities to adopt the blockchain technology?



THE EUROPEAN REGISTRY OF BASE REGISTRIES - CATALOGUE

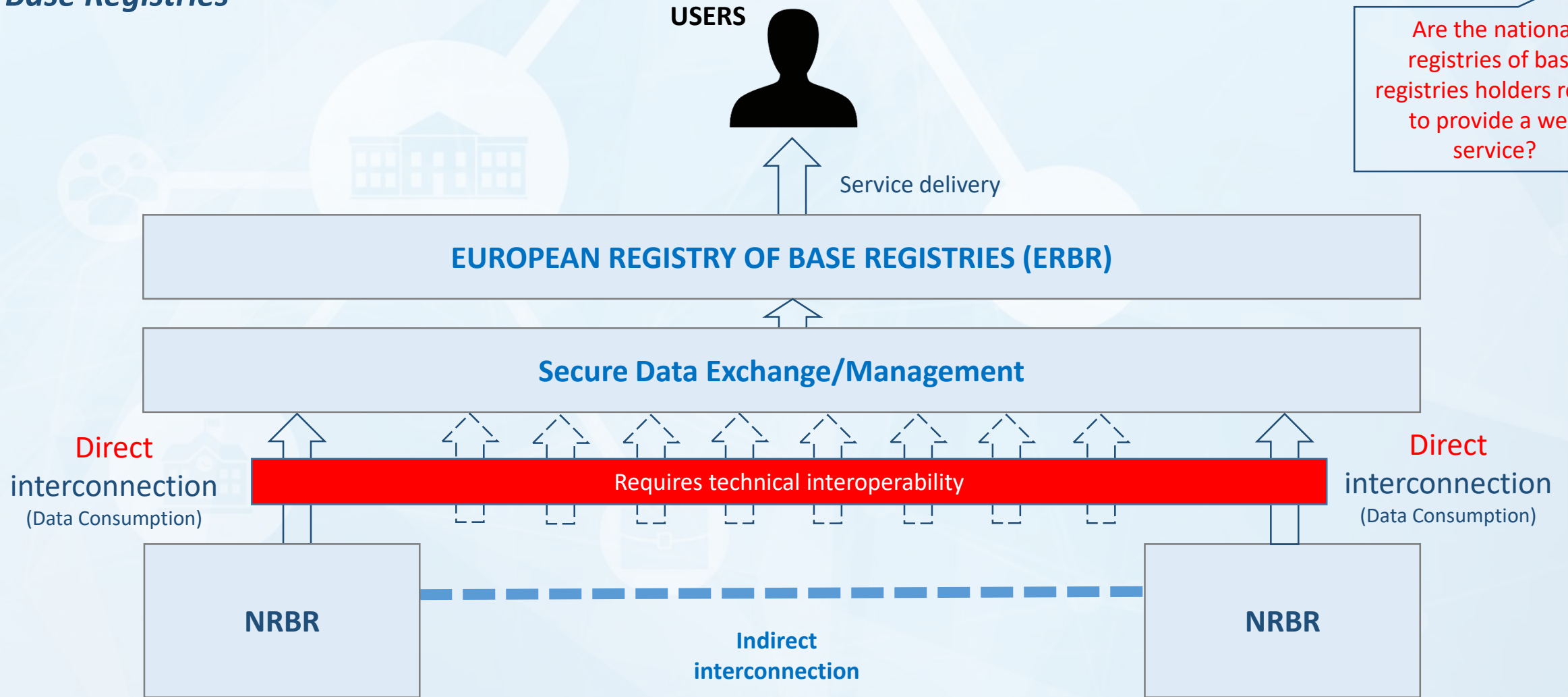
SCENARIO 2

A Registry of National Registries of Base Registries



SCENARIO 2

A Registry of National Registries of Base Registries



SCENARIO 2

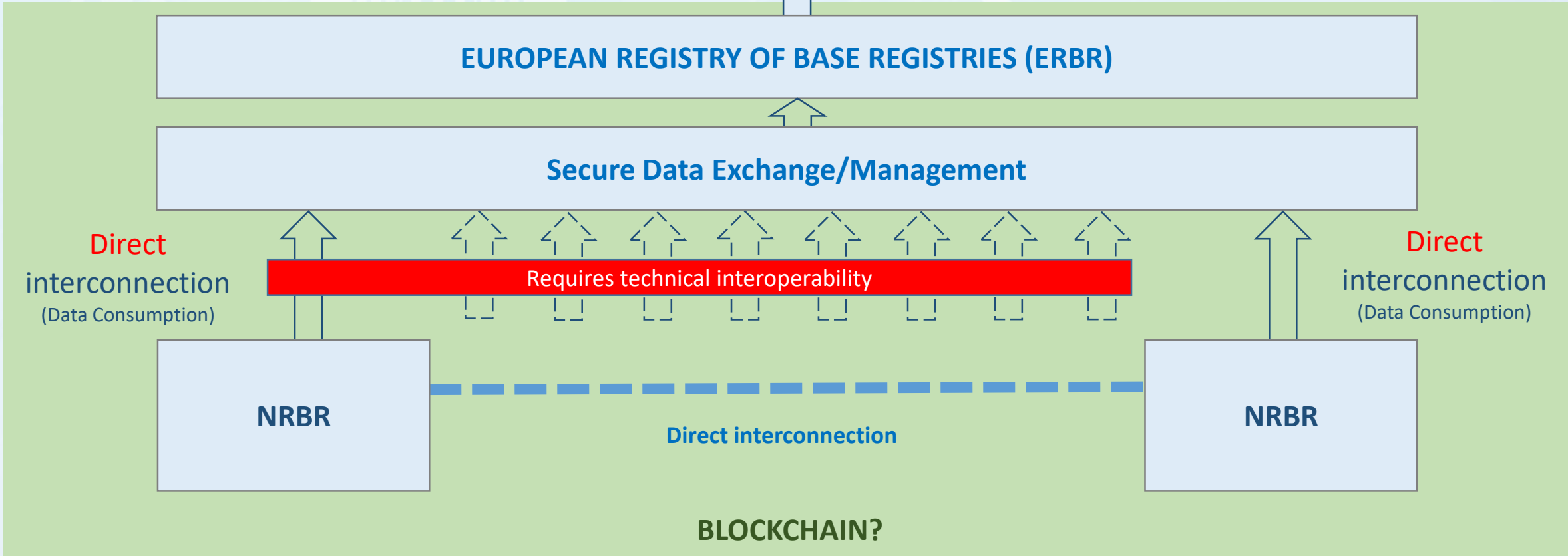
A Registry of National Registries Of Base Registries

USERS



Service delivery

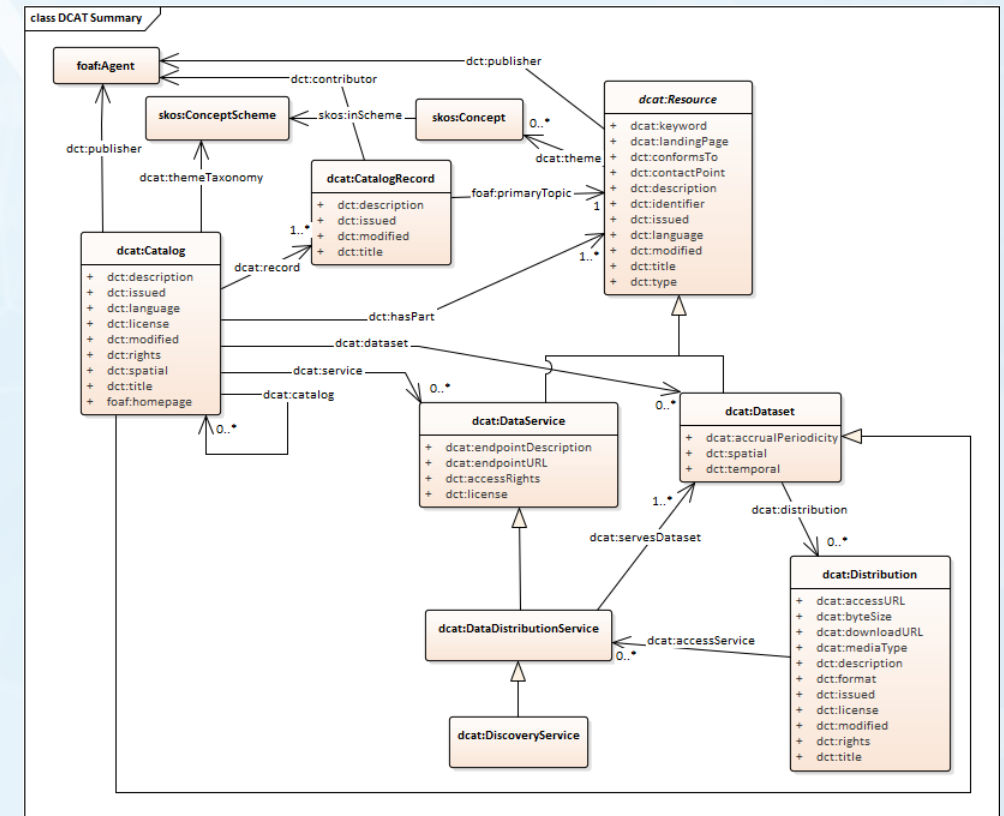
Is it realistic to expect the national registries of base registries holders to adopt the blockchain technology?



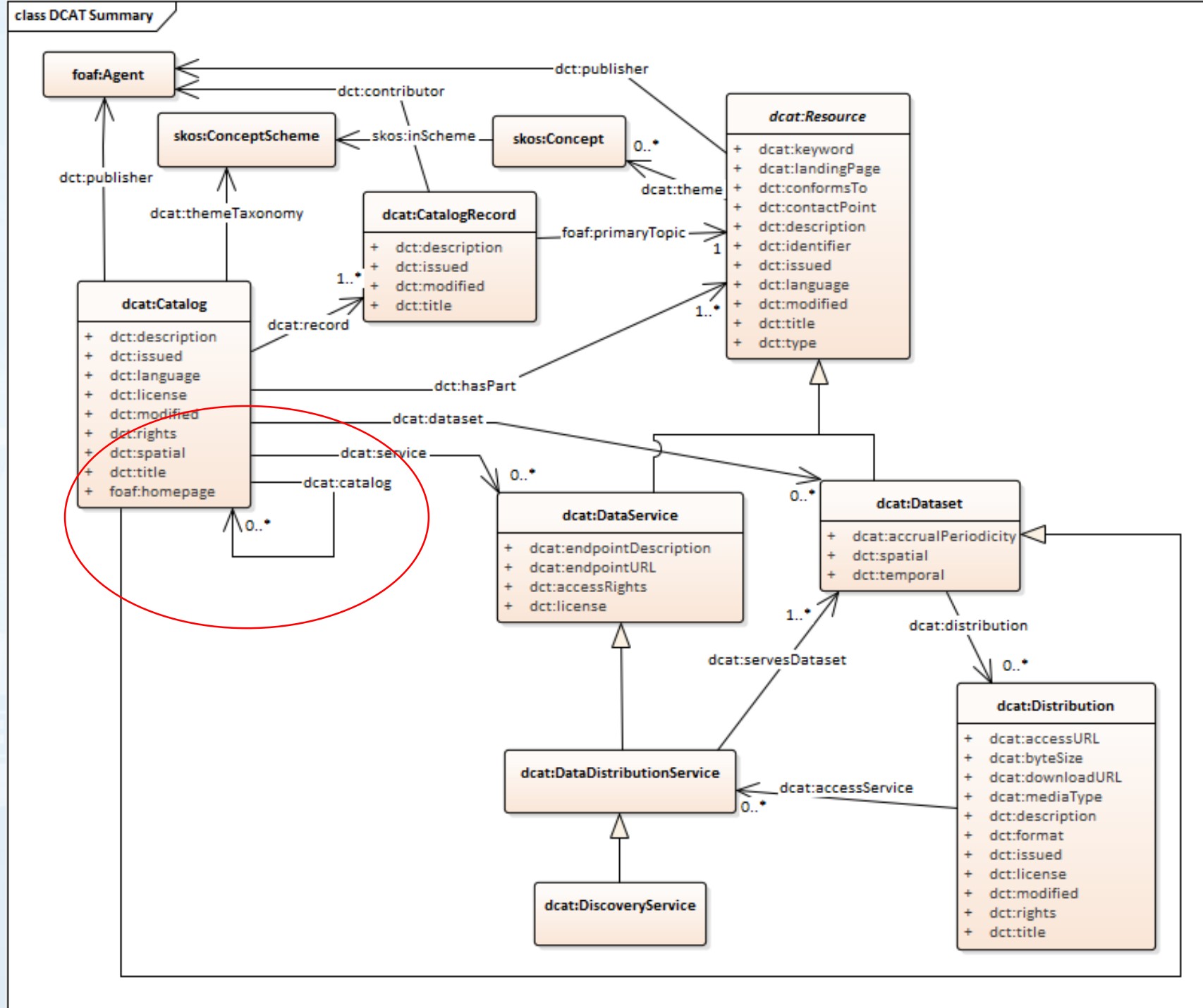
WHICH METADATA FOR BASE REGISTRIES DESCRIPTION?

DCAT

- DCAT is an RDF vocabulary designed to facilitate interoperability between data catalogues published on the Web.
- DCAT is used to describe datasets in data catalogues. It allows publishers to use a **standard model and vocabulary that facilitates the consumption and aggregation of metadata from multiple catalogues**, and in doing so, improves the discoverability of datasets.
- INSPIRE uses DCAT to model entity registry .
- A draft of DCAT has been published on the 8th of May where the main features which were added through application profiles, such as the European Commission's DCAT-AP are implemented.



THE DCAT SCHEMA



DCAT-AP

What is DCAT-AP?

- The DCAT Application Profile for data portals (DCAT-AP) is a specification based on the Data Catalogue vocabulary (DCAT) for describing public sector datasets in Europe.
- Its basic use case is to enable cross-data portal search for data sets and make public sector data better searchable across borders and sectors. This can be achieved by the exchange of descriptions of datasets among data portals.

Why do we extend DCAT-AP ?

- The DCAT-AP is **cross-border** and **cross-domain**. Applications within a national domain, or applications in a particular domain may have **different requirements** and therefore may want to define extensions to the basic profile.

WHICH METADATA FOR BASE REGISTRIES DESCRIPTION?

DCAT-AP

What is the status ?

Currently, two extensions of the DCAT-AP have been defined at the European level. The **GeoDCAT-AP** for geospatial datasets and the **StatDCAT-AP** for statistical datasets.

Many Member States are also defining **national application profiles of the DCAT-AP**:

- Belgium
- Germany
- Ireland
- Italy
- The Netherlands
- Spain
- Sweden
- Switzerland

AGENDA



INTRODUCTION



THE EUROPEAN REGISTRY OF BASE REGISTRIES



THE ONCE ONLY PRINCIPLE (TOOP)



MEMBER STATES PRESENTATIONS



Q&A – OPEN DISCUSSION



1. Introduction
2. Conceptual scope and use cases: the business view
3. Baseline scenarios: the architecture view
4. Current status and next steps
5. Relevance to the Registry of registries

TOOP
The Once-Only
Principle Project



**The
Once
Only
Principle**

TOOP Pilot Solution Architecture

**Access to Base Registers (ABR)
ISA² Action
Webinar, 21.06.2018**

Agenda

1. Introduction
2. Conceptual scope and use cases: the business view
3. Baseline scenarios: the architecture view
4. Current status and next steps
5. Relevance to the Registry of registries



1. INTRODUCTION



What is the Once-Only Principle?

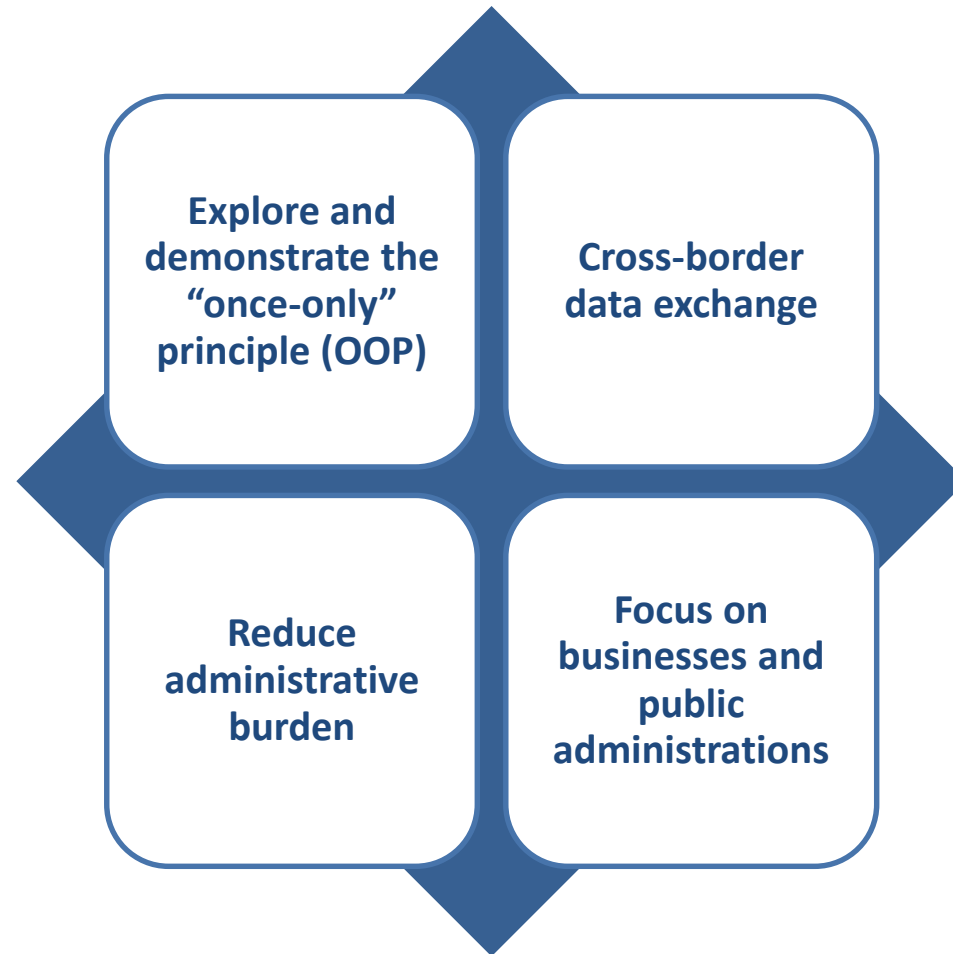
Collecting & storing data only once

Streamlining processes by:

- Enabling automated data sharing
- Replacing redundant data entry and collection with information requests from original and authentic source
- Improving data reliability

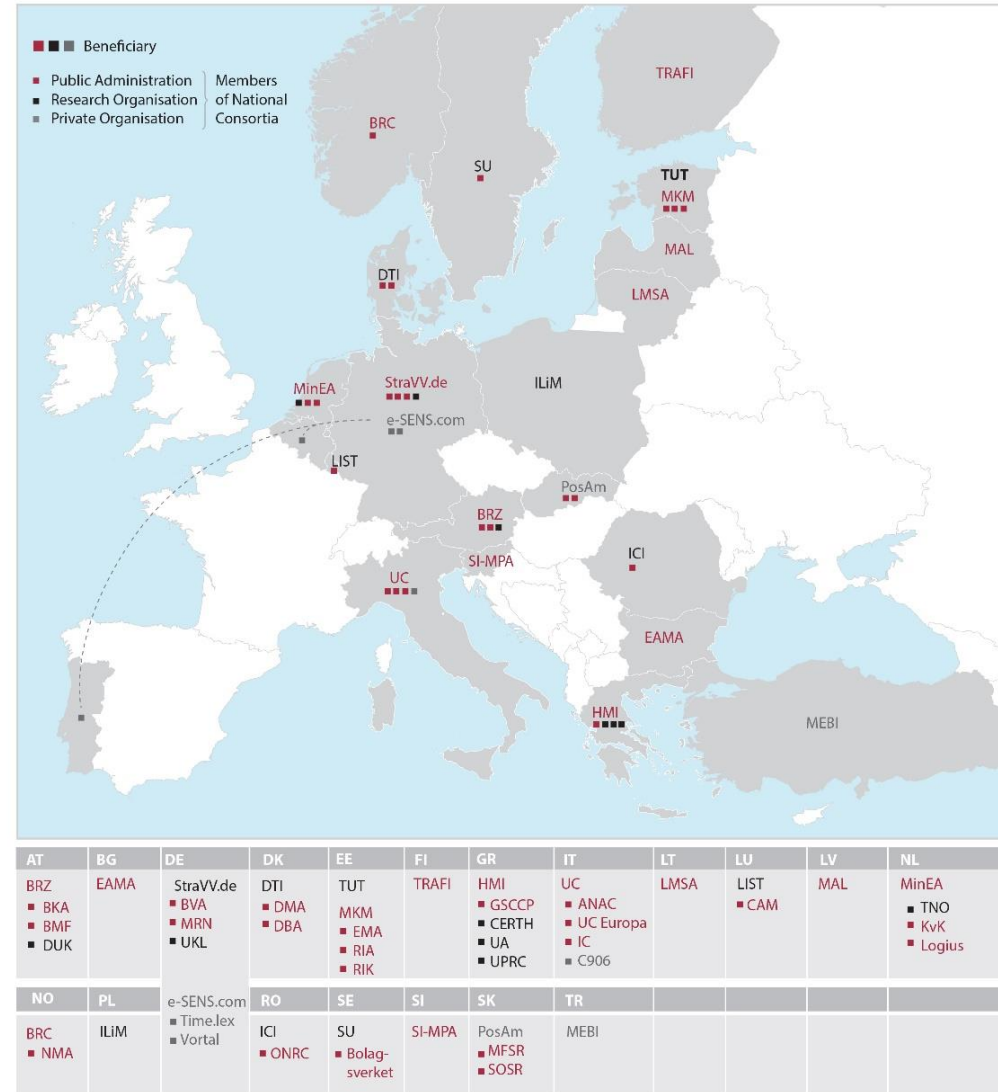


Aim – apply the OOP to company-related procedures



A Large Scale Pilot

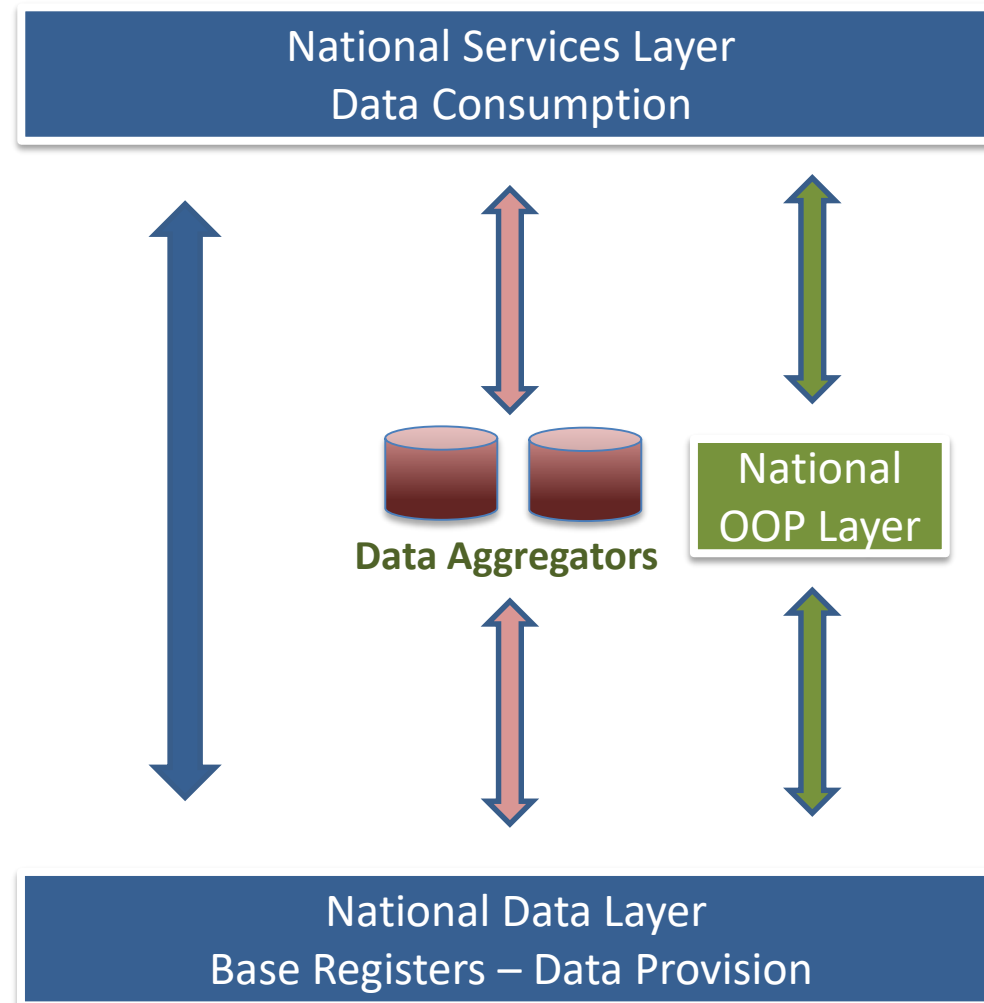
- 21 Beneficiaries from 21 countries
- 50+ Partners
 - Public Administrations
 - Universities
 - Companies



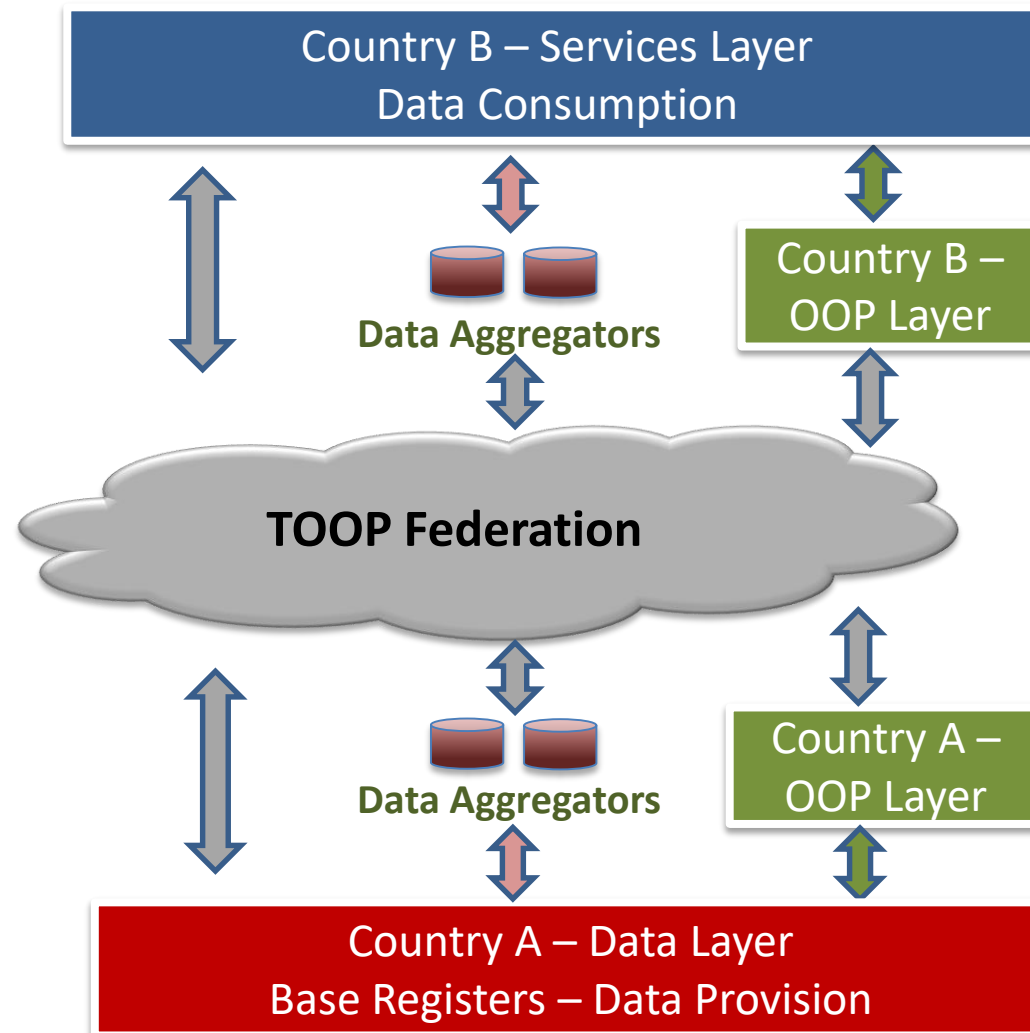


2. CONCEPTUAL SCOPE AND USE CASES: THE BUSINESS VIEW

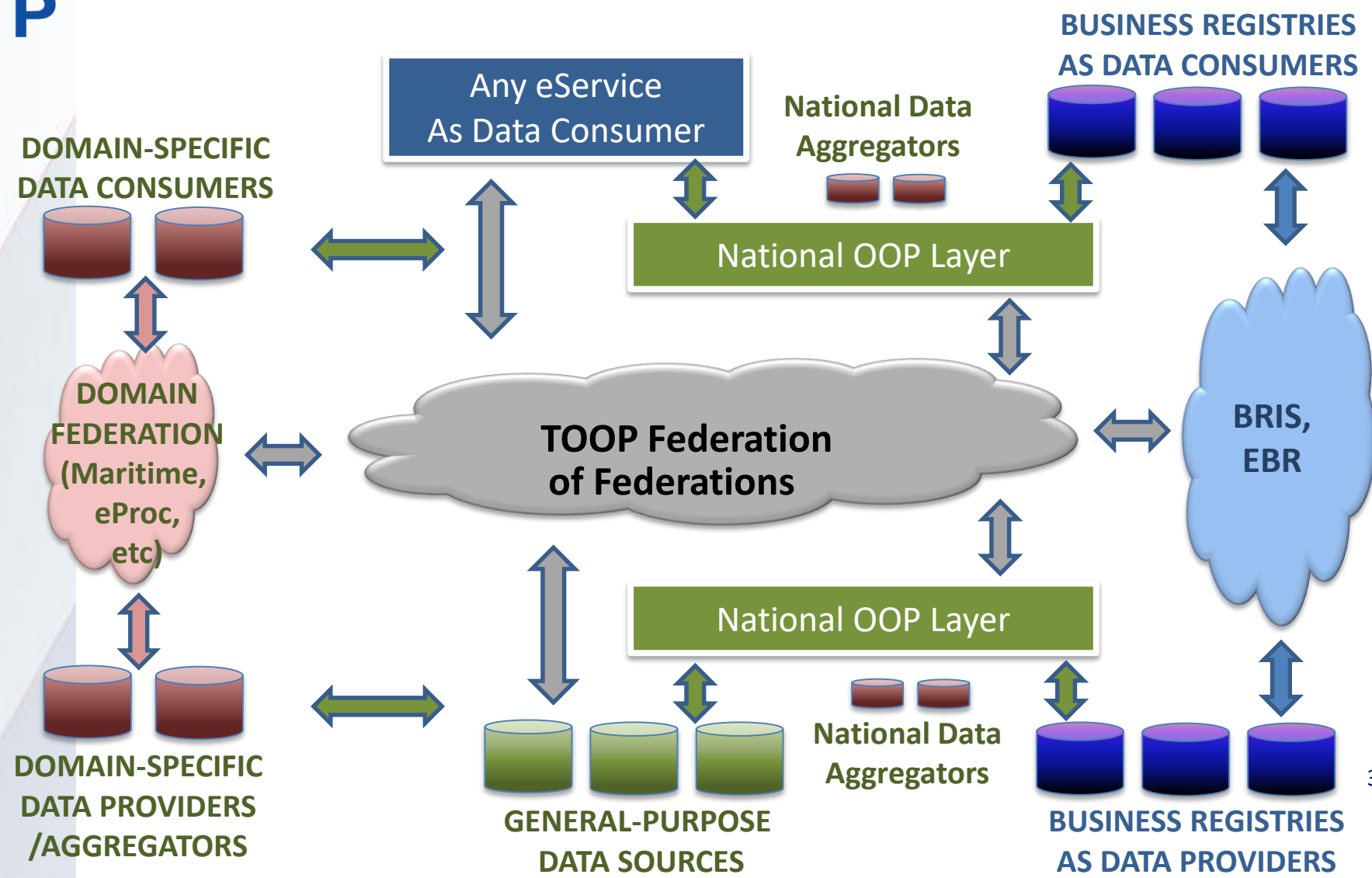
The national OOP case



The cross-border OOP case (simplified)



How TOOP Pilots fit into the big picture



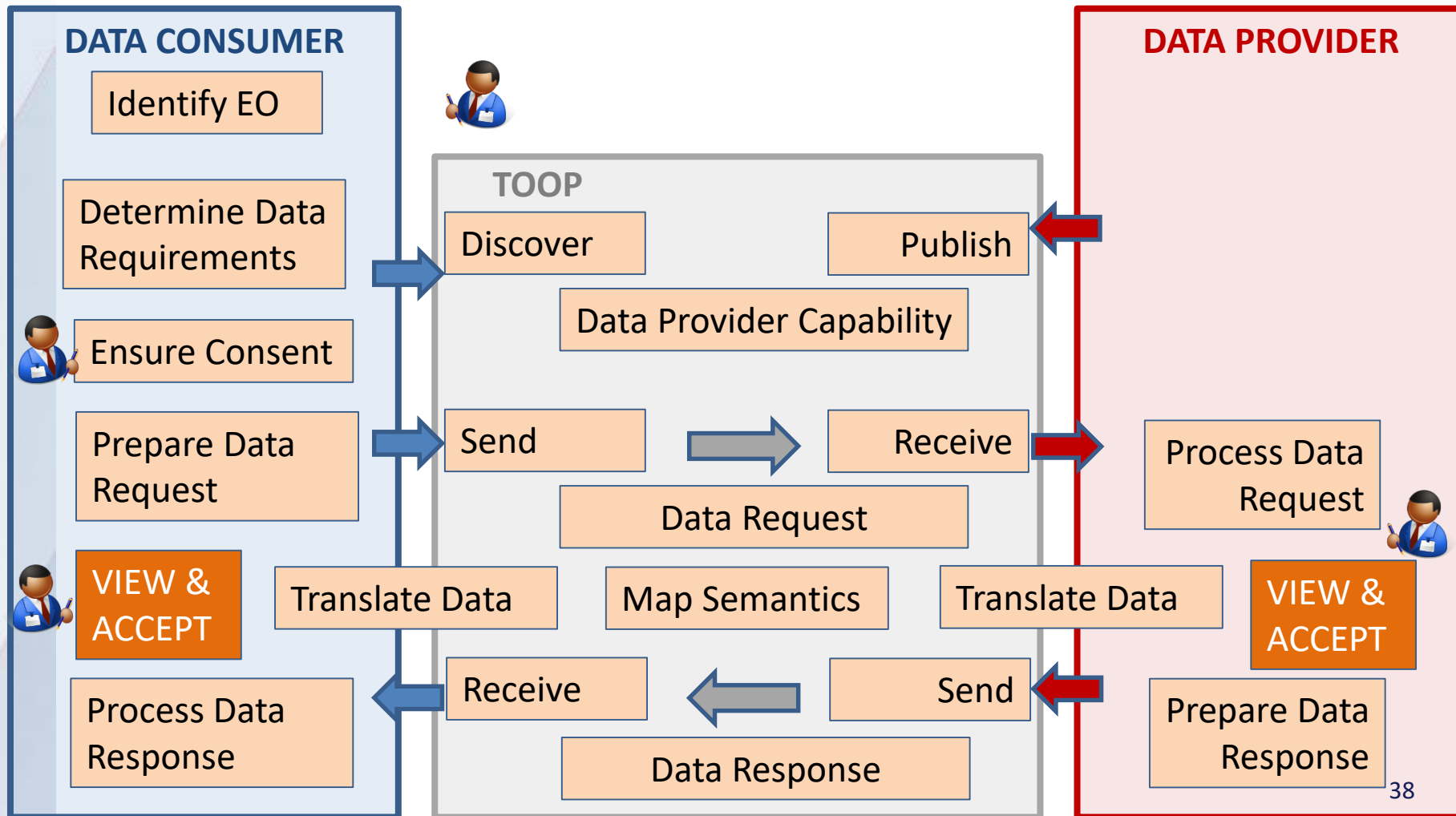
The TOOP Pilot Areas and Use Cases

- Cross-border eServices for Business Mobility
 - eProcurement: Automatic retrieval of EO qualification evidences
 - Business Licenses/Registration in another country
 - Retrieving Mandates and selected company data
- Connected Company Data
 - Exchange of Data between Business Registries
 - Branch registration, branch lifecycle (e.g. filing accounts and other notifications)
 - Providing Business Registry Data to external eGovernment Services in the MS
- Maritime Pilot
 - Online Ship Certificates
 - Online Crew Certificates

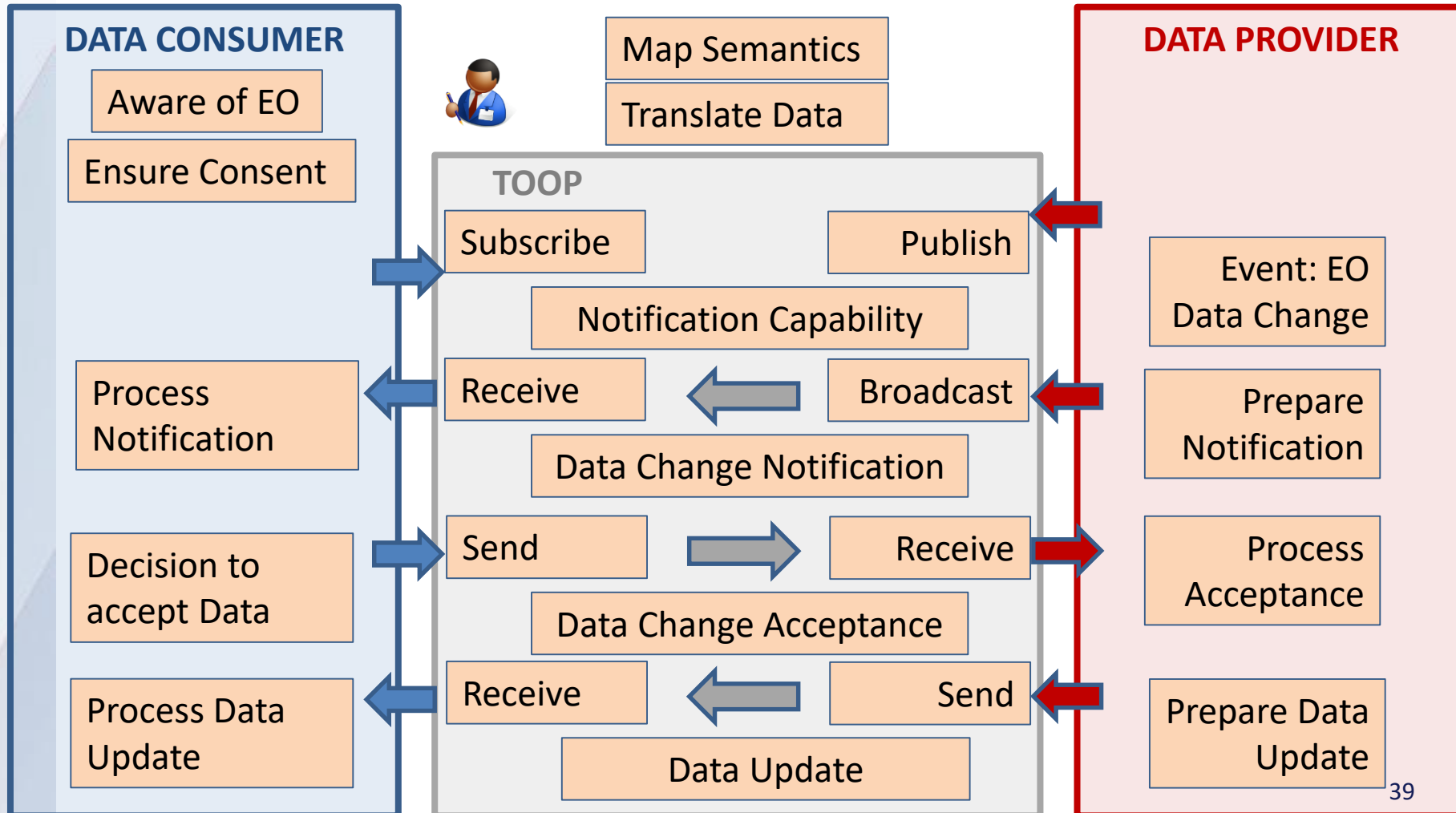


3. BASELINE SCENARIOS THE ARCHITECTURE VIEW

Simple Baseline Scenario: pull of data

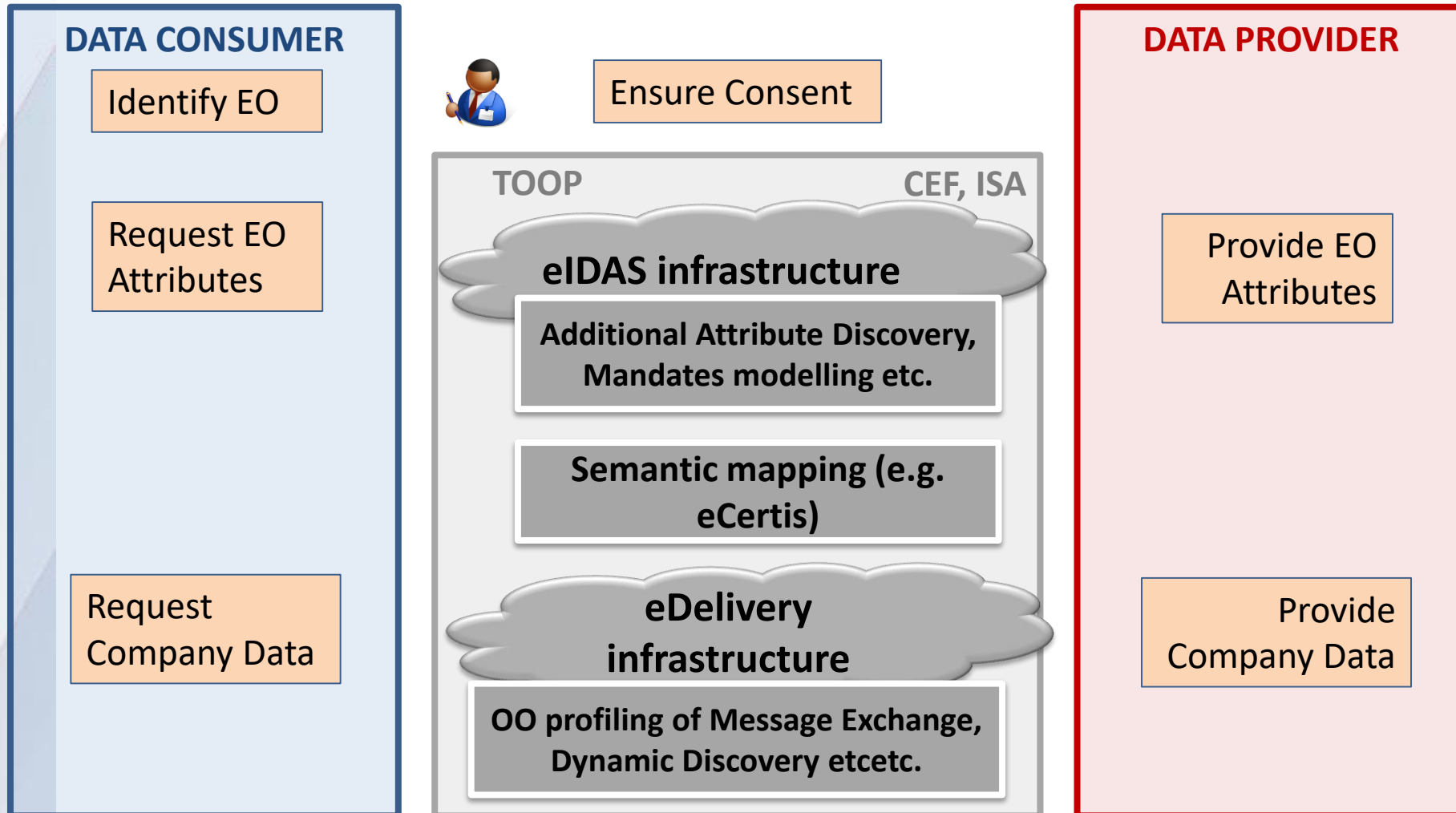


Extended Baseline Scenario: Notify and push

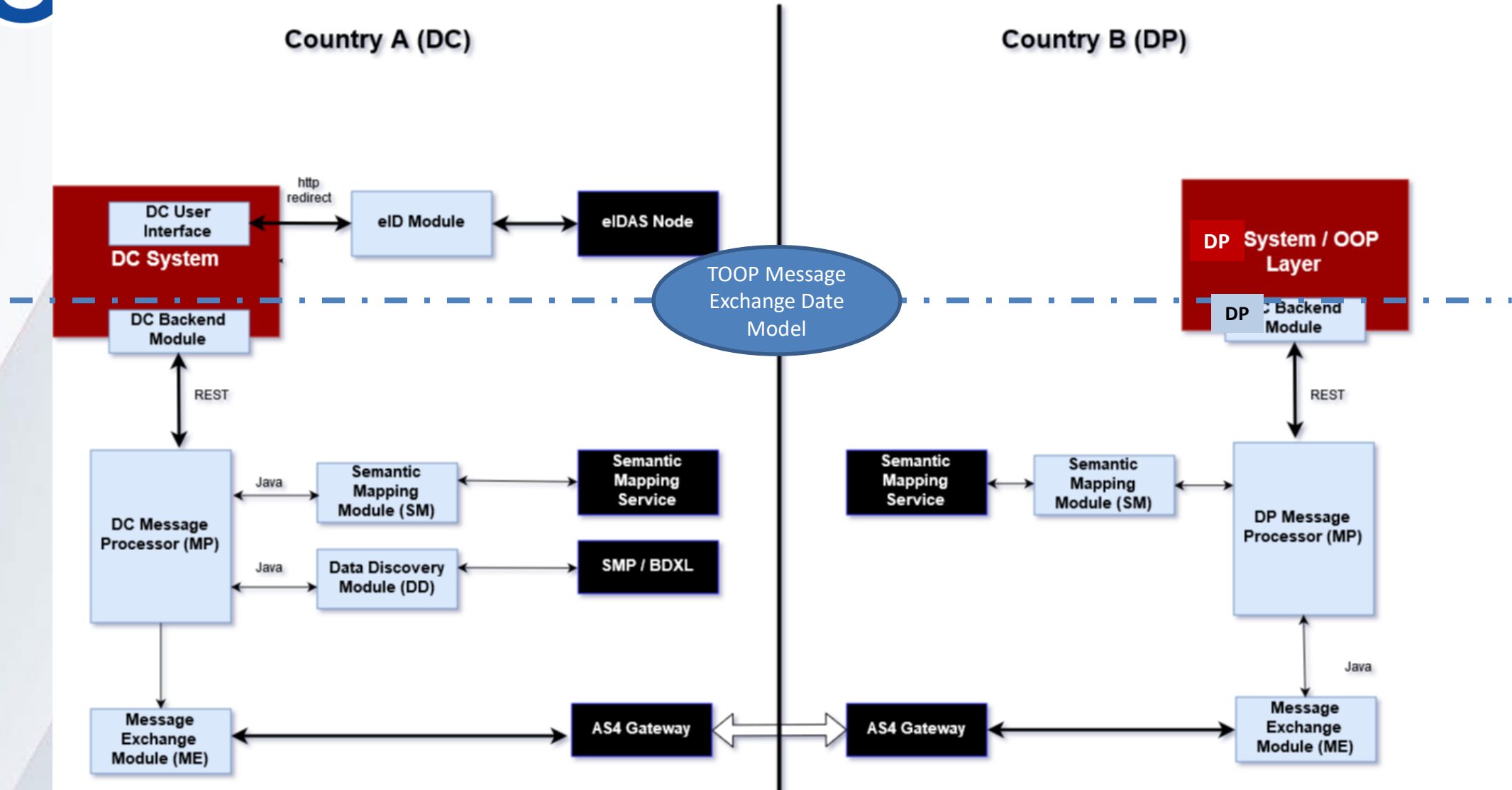




Re-use and enhance existing cross-border EU infrastructure



Detailed definition of Component Architecture





5. STATUS AND NEXT STEPS

Where we are and where we are going

- Release of common specs and software components: May 18th, 2018
- Some countries already started implementation
- Expected implementations until September: SE, GR, IT, AT, SK
- More use case variations to be implemented in next versions
- Connecting to BRIS to access Business Registers
- Supporting the implementation of the Single Digital Gateway implementation – and the Implementing Act.



6. RELEVANCE TO THE REGISTRY OF REGISTRIES

If the “Registry of Registries” would...

- Provide a way to access the base registers
 - From any relevant external application
 - Automatically – system to system exchange of machine interpretable data
 - In a secure and trusted manner, ensuring purpose of access and use of data is known and acceptable
- Then the TOOP architecture can show...
 - How to exchange data without harmonizing internal MS infrastructure
 - How to make data consumers aware of what can be provided by which base registers
 - How to cross different semantic domains
 - How to implement GDPR requirements

TOOP
The Once-Only
Principle Project



**The
Once
Only
Principle**

**Thank you!
Questions?**

Visit TOOP: toop.eu

AGENDA



INTRODUCTION



THE EUROPEAN REGISTRY OF BASE REGISTRIES



THE ONCE ONLY PRINCIPLE (TOOP)



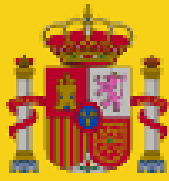
MEMBER STATES PRESENTATIONS



Q&A – OPEN DISCUSSION

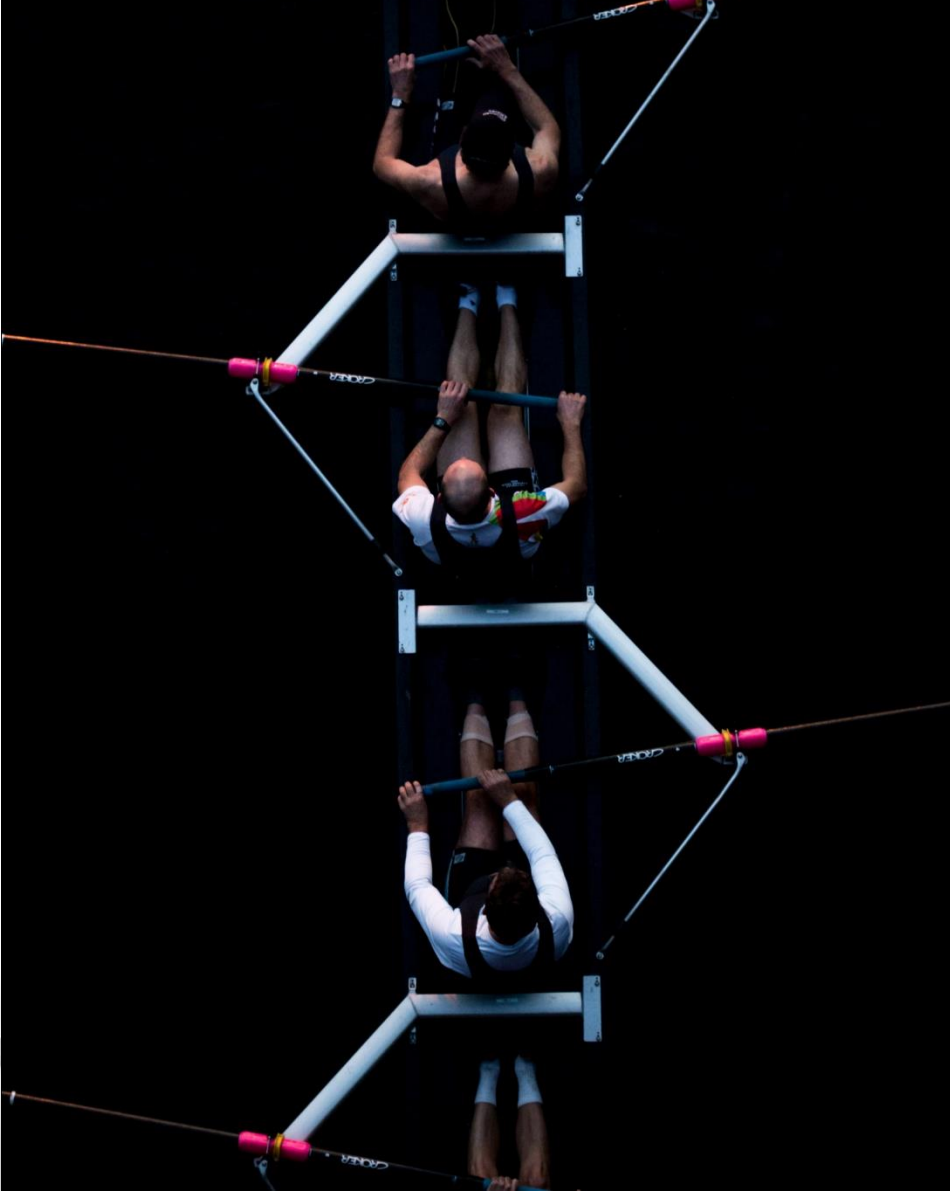
The presentations of the MS on the creation of National Registries of Registries (RR)

- The context for creating RR on national level
- MS needs and requirements for RR
- MS challenges faced in the creation of RR
- Any other aspects



GOBIERNO
DE ESPAÑA

MINISTERIO
DE POLÍTICA TERRITORIAL
Y FUNCIÓN PÚBLICA



ABR Webinar

21 June 2018

Gemma del Rey Almansa

*Ministry of Territorial Policy and Public
Function*

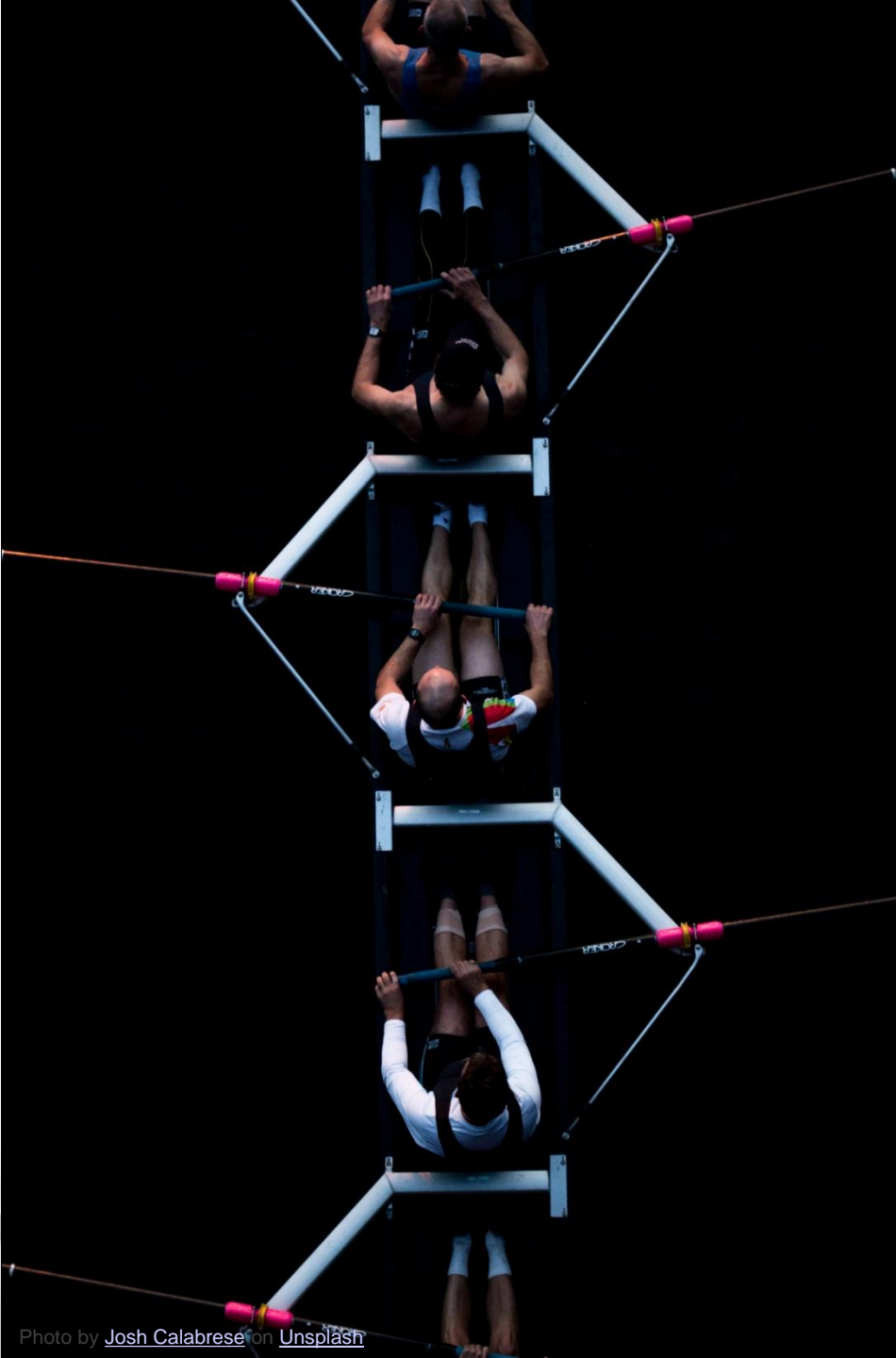
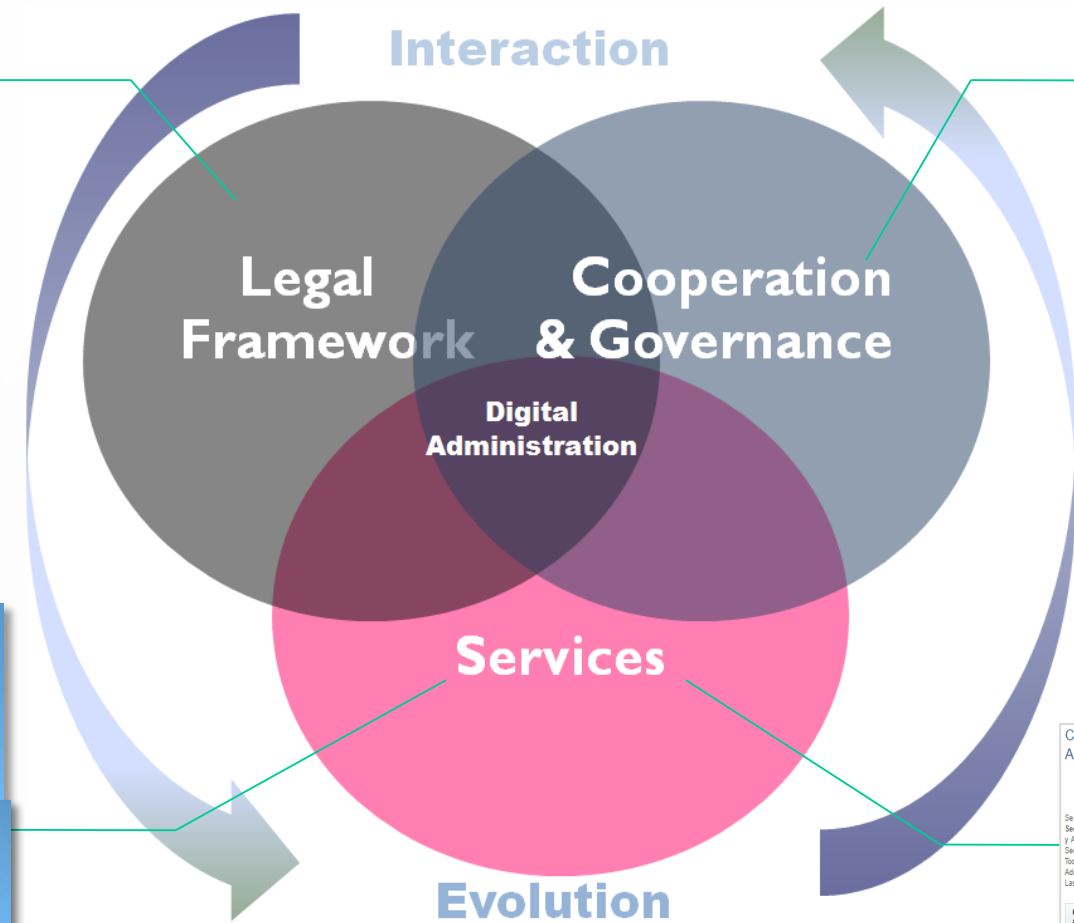
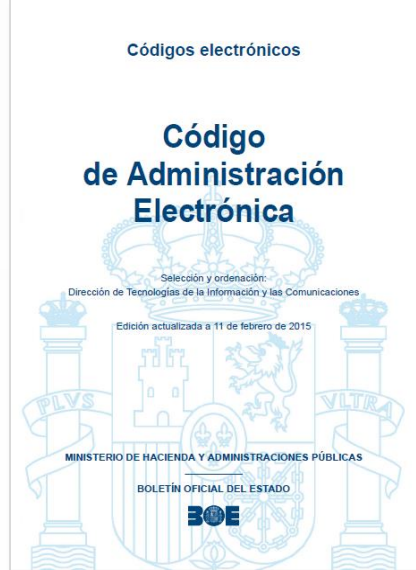


Photo by [Josh Calabrese](#) on [Unsplash](#)

Understanding:

1. **Digital Transformation**
2. Legal Framework
3. Cooperation and Governance
4. Services
5. Challenges Ahead



Comité de Dirección TIC (AGE)

Comisión Sectorial de administración electrónica

Composición
Lo forman los titulares de las Direcciones Generales de las Comunidades y Ciudades Autónomas con competencias en materia de Administración Electrónica de cada una. Por parte de la Administración General del Estado, la Secretaría General de Administración Digital. Las entidades de la Administración Local quedarán representadas por la Federación Española de Municipios y Provincias. Y también participa como invitada la CRUEB, Conferencia de Rectores de las Universidades Españolas.

Desarrollo de su actividad
En el seno de esta Comisión existen una serie de Grupos de Trabajo técnicos para compartir experiencias y buenas prácticas o para la realización de proyectos en colaboración. Estos grupos son dinámicos se forman en función de las necesidades de cooperación en las materias de que se trate y pueden cesarse una vez cumplidos sus objetivos y presentadas sus conclusiones y recomendaciones.

Grupos de Trabajo actuales
Actualmente el Comité Sectorial cuenta con doce grupos de trabajo:

- Grupo de Identidad Digital y firma electrónica
- Grupo de Intermediación y Servicios. Carpeta Ciudadana
- Grupo de Interoperabilidad
- Grupo de Telecomunicaciones Integradas
- Grupo de Observatorio, Indicadores y Medidas
- Grupo de Seguridad
- Grupo de Reutilización de Aplicaciones y Servicios y RISP
- Grupo de Repositorios Comunes
- Grupo Documento, Expediente y Archivo Electrónico
- Grupo de Funcionarios Habilitados
- Grupo de apoyo funcional a la implantación de las leyes 39 y 40/2015
- Grupo Identificador Europeo de Legislación - ELI

Forums for public-private collaboration

Convenios de colaboración en materia de Administración electrónica

valorar | Escuchar | Imprimir PDF

Se relacionan en orden cronológico, una selección de convenios promovidos desde la Secretaría de Estado de Administraciones Públicas (SEAP) del Ministerio de Hacienda y Administraciones Públicas (MINEP) y de publicación, salvo excepciones, en la Sección III del BOE. Todos ellos son referidos a la administración electrónica y suscritos con diferentes Administraciones Públicas – como las regionales y las universidades –. Las materias referidas son las siguientes:

- Convenios para la prestación mutua de soluciones básicas de administración electrónica
- Convenios para la utilización de la aplicación informática ORVE como mecanismo de acceso al REC y a SIR
- Convenios para la implantación de una red de Oficinas Integradas de Atención al Ciudadano
- Convenios en materia de reducción de cargas administrativas
- Otros convenios: utilización de la aplicación informática de cita previa

Listado de convenios en función de la administración firmante

- Comunidad Autónoma de Andalucía
- Comunidad Autónoma de Aragón
- Comunidad Autónoma del Principado de Asturias
- Comunidad Autónoma de las Illes Balears
- Comunidad Autónoma de Canarias
- Comunidad Autónoma de Cantabria
- Comunidad Autónoma de Castilla-La Mancha
- Comunidad Autónoma de Castilla y León
- Comunidad Autónoma de Cataluña
- Comunitat Valenciana
- Comunidad Autónoma de Extremadura
- Comunidad Autónoma de Galicia
- Comunidad Autónoma de La Rioja
- Comunidad de Madrid
- Comunidad Autónoma de la Región de Murcia
- Comunidad Foral de Navarra
- Comunidad Autónoma del País Vasco
- Conferencia de Rectores de las Universidades Españolas (CRUE)

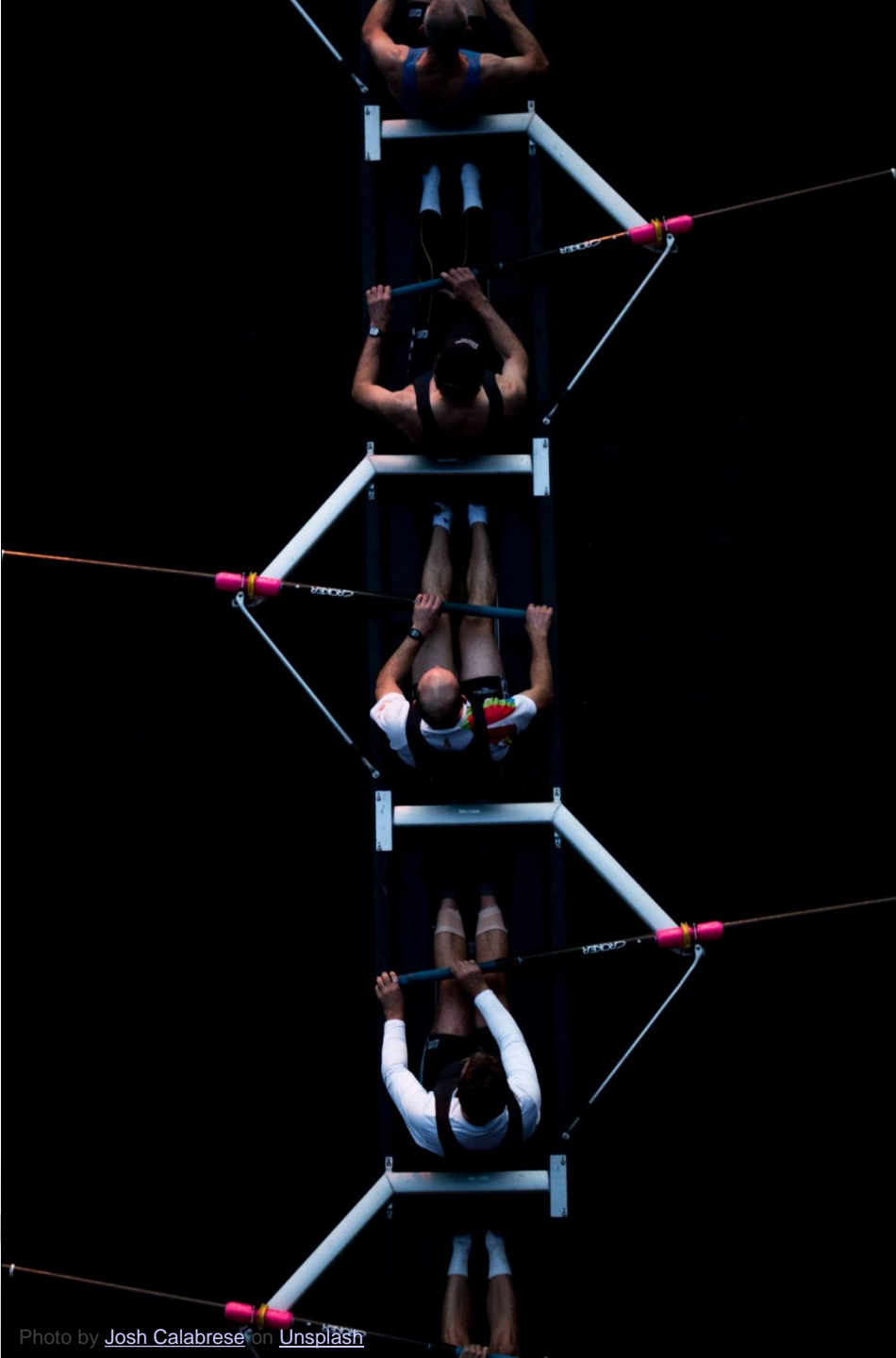


Photo by [Josh Calabrese](#) on [Unsplash](#)

Understanding:

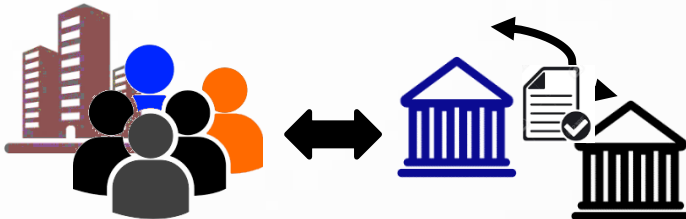
1. The Public Sector in Spain
2. Digital Transformation
- 3. Legal Framework**
4. Cooperation & Governance
5. Services
6. Challenges Ahead

A favourable legal framework



Law 39/2015 - Article 28

Citizens will not be required to provide documents that have been prepared by any Administration.



Law 40/2015 - Article 155

Each Administration shall facilitate access to other Public Administrations regarding the data related to the interested parties, specifying the conditions, protocols and functional or technical criteria necessary to access such data with the maximum guarantees of security, integrity and availability.

National Interoperability Framework of Spain

It's a legal text (Royal Decree 4/2010)

Its contributes to build and improve interoperability addressing its dimensions.

Scope: Public Sector

It's a **key element** for the **development of digital administration.**

Aligned with the **EIF.**



DIGITAL TRANSFORMATION PLAN FOR THE GENERAL ADMINISTRATION

ICT STRATEGY



OBJECTIVES	LINES OF ACTION
<i>I. Increased productivity and efficiency in the internal functioning of the Administration</i>	<ol style="list-style-type: none"> 1. Making the internal management processes of administrative units digital 2. Developing digital jobs
<i>II. Choice of the digital channel by citizens and businesses to interact with the Administration</i>	<ol style="list-style-type: none"> 3. Providing e-services in the public sector that match the new technologies 4. Improving user satisfaction with e-services in the public sector 5. Promoting innovation in the provision of services
<i>III. Greater efficiency in the provision of ICT services in the Administration</i>	<ol style="list-style-type: none"> 6. Providing shared common services
<i>IV. Smart corporate management of knowledge, data and information</i>	<ol style="list-style-type: none"> 7. Publishing information for citizens and businesses and facilitating its being re-used 8. Relying on data analysis systems for decision making
<i>V. Corporate security and usability strategy</i>	<ol style="list-style-type: none"> 9. Ensuring the security of GA and PA information systems

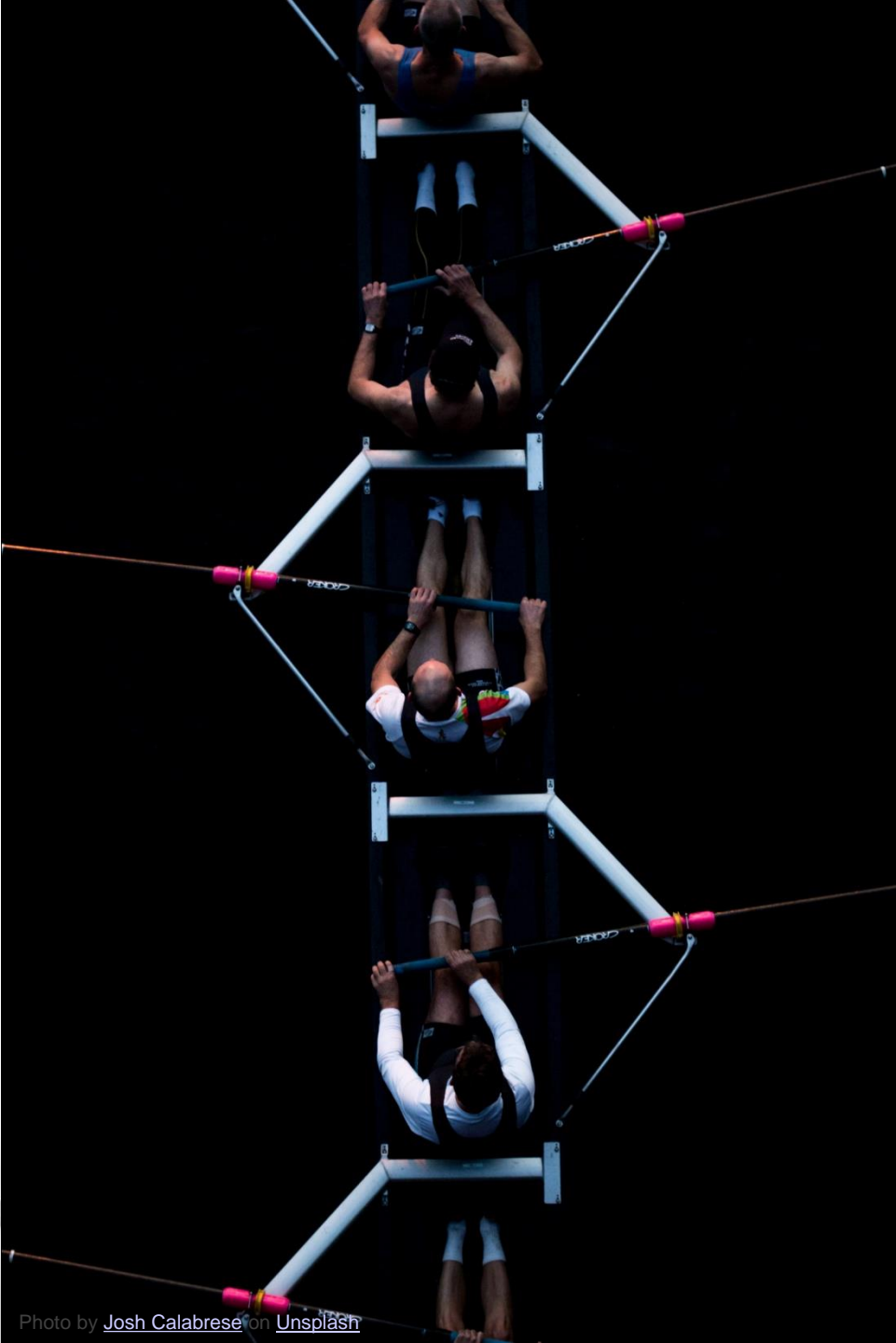
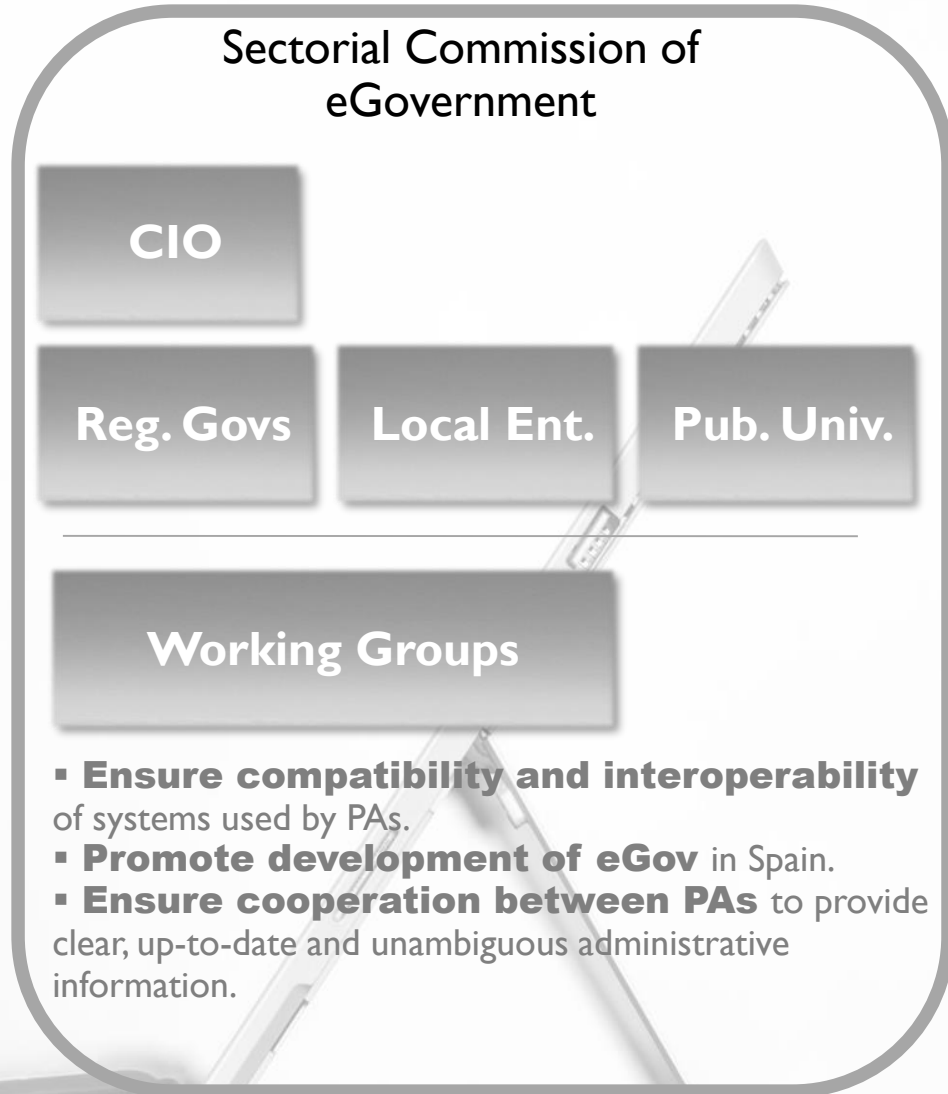
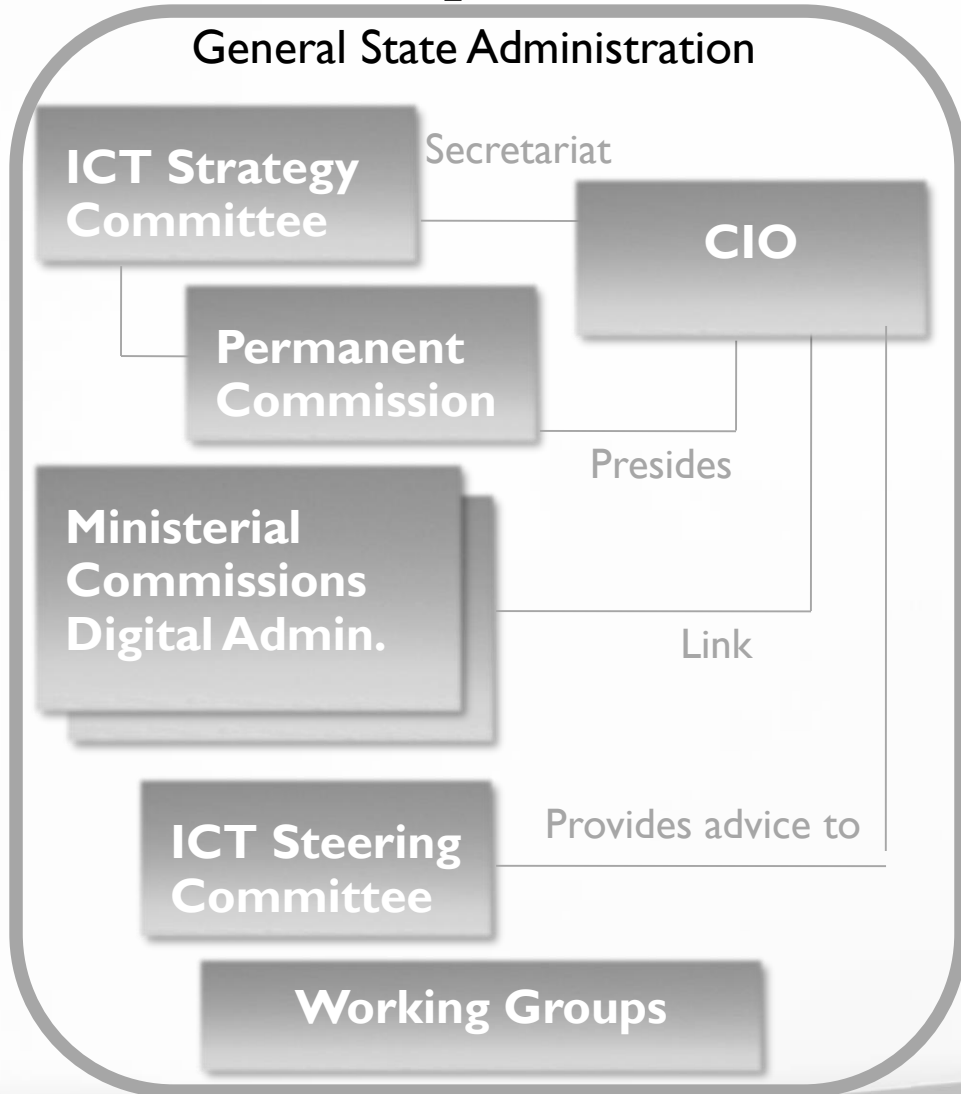


Photo by [Josh Calabrese](#) on [Unsplash](#)

Understanding:

1. The Public Sector in Spain
2. Digital Transformation
3. Legal Framework
- 4. Cooperation & Governance**
5. Services
6. Challenges Ahead

Cooperation & Governance



+ **Forums with stakeholders:** e-Invoice, e-Document, Citizen's Folder

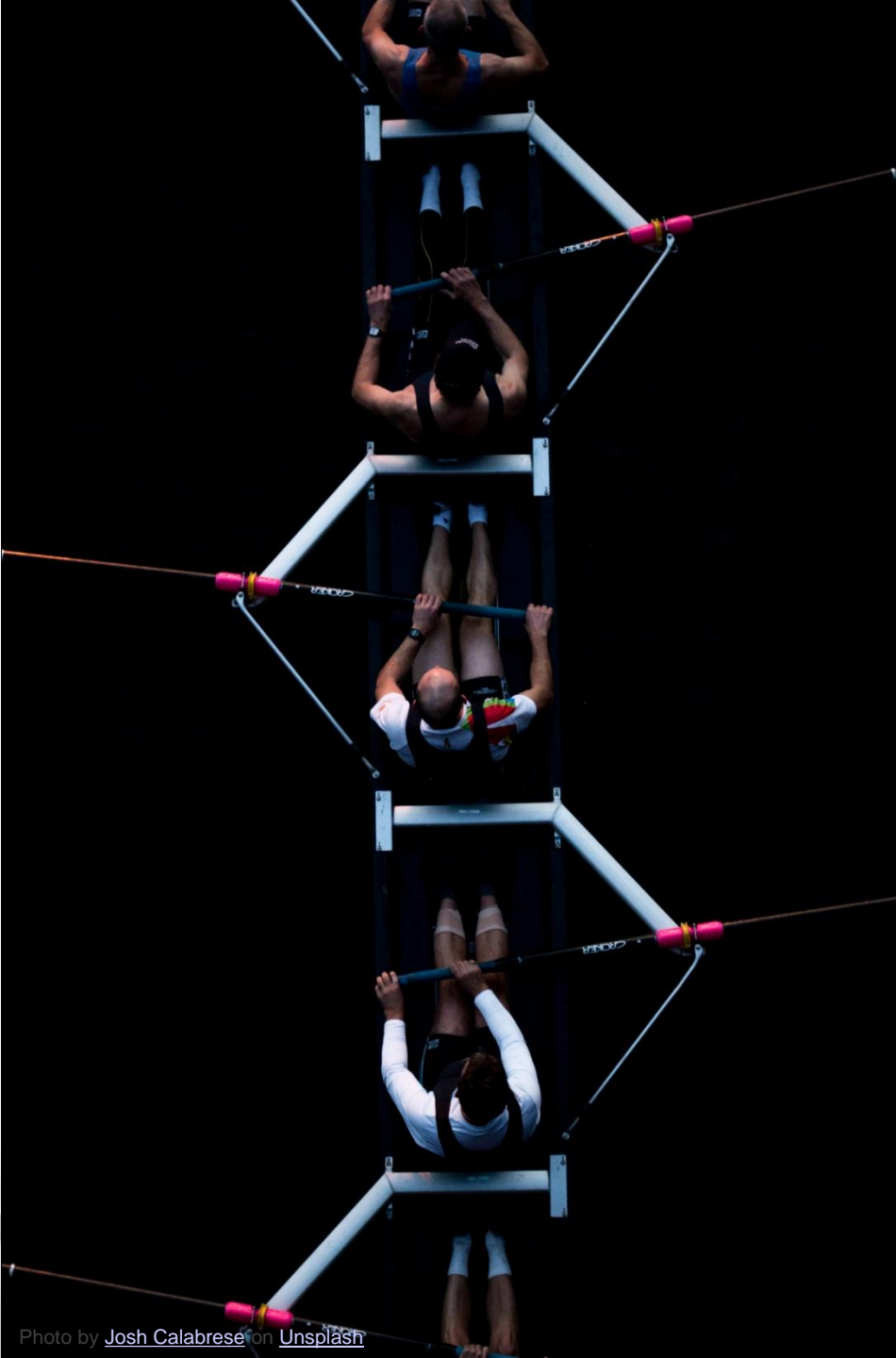


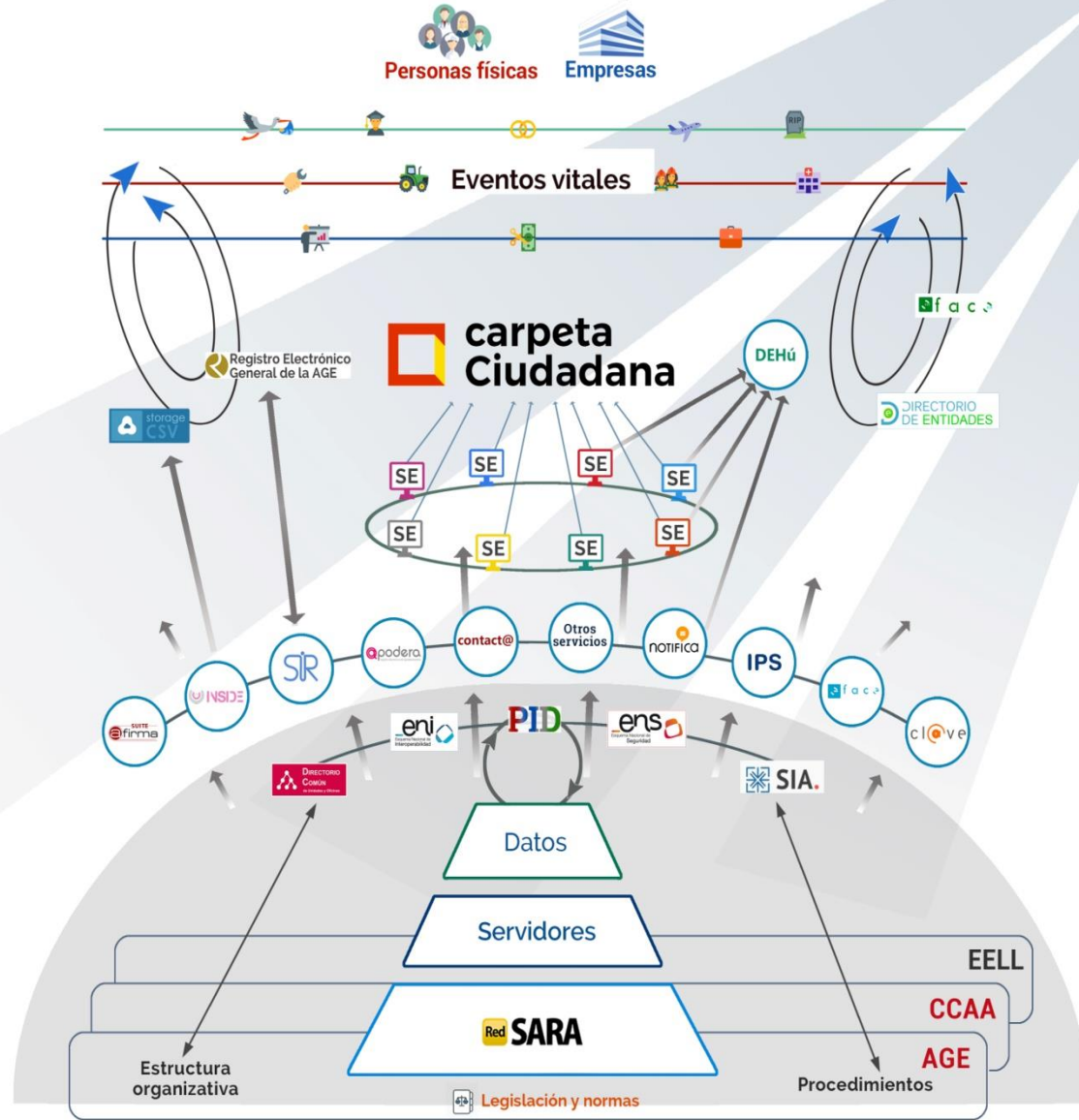
Photo by [Josh Calabrese](#) on [Unsplash](#)

Understanding:

1. The Public Sector in Spain
2. Digital Transformation
3. Legal Framework
4. Cooperation & Governance
- 5. Services**
6. Challenges ahead

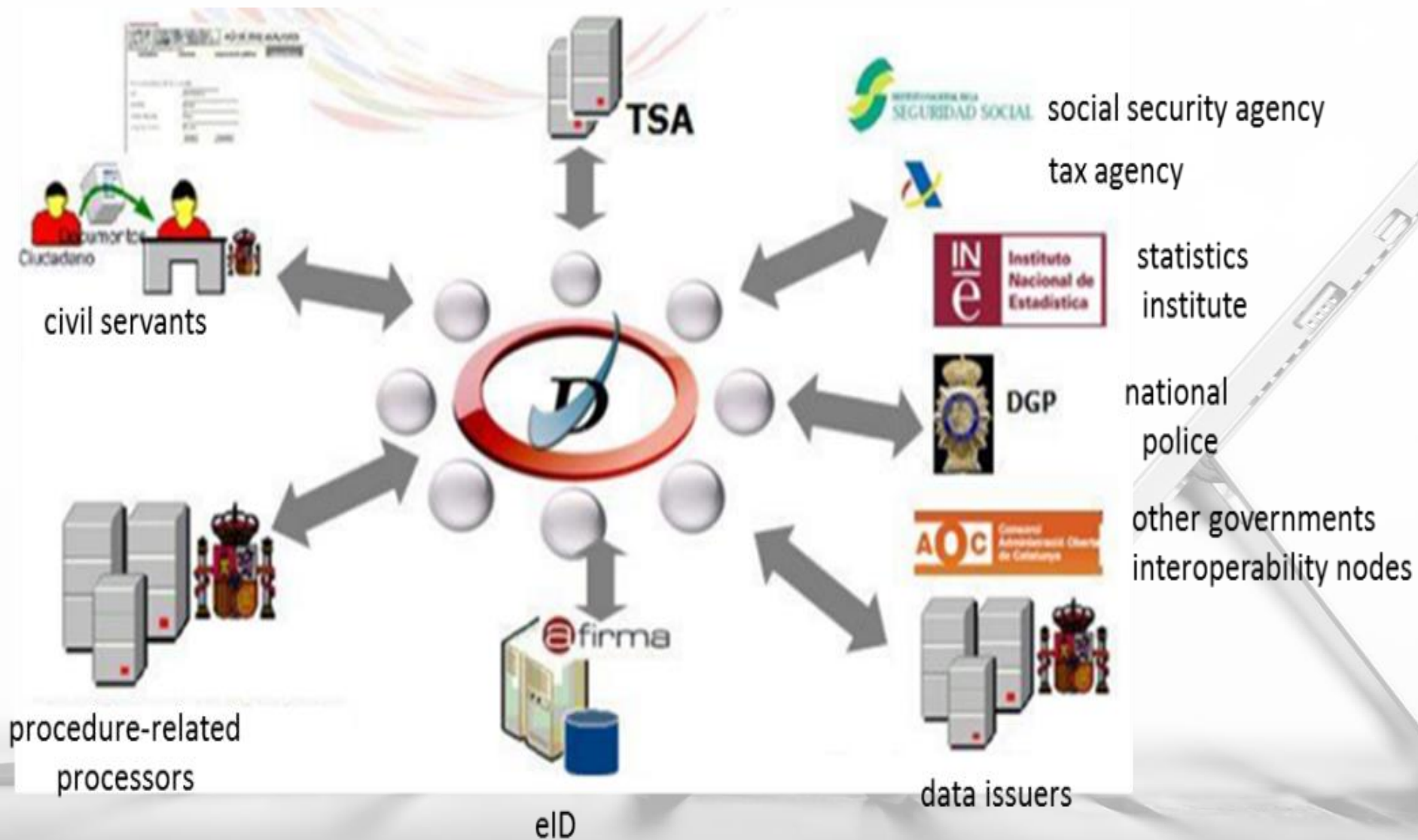
ADMINISTRACIÓN DIGITAL

OBSAE



- SIA.** Sistema de Información Administrativa
- Directorio Común** de Unidades Orgánicas y Oficinas
- PID** Plataforma de Intermediación de datos
- SR** Sistema de Interconexión de Registros
- SE** Sede Electrónica Sectorial
- SARA** Infraestructura de Redes y Comunicaciones
- podera** Registro Electrónico de Apoderamientos
- contact@** Registro de Contactos Electrónicos
- NOTIFICA** Servicio Compartido de Gestión de Notificaciones
- DEHú** Dirección Electrónica Habilitada Única
- INSIDE** Gestión de Expedientes y Documentos Electrónicos
- f a c c** Punto General de entrada de Facturas Electrónicas
- f a c c** Punto General de entrada de Facturas Electrónicas entre Empresas
- eni** Esquema Nacional de Interoperabilidad
- ens** Esquema Nacional de Seguridad
- CETIC** Comisión de Estrategia TIC
- csae** Comisión Sectorial de AE

Data Intermediation Platform



Citizen's Folder







Carpeta Ciudadana > Mis expedientes abiertos (en tramitación)

Mis expedientes abiertos (en tramitación)

Aviso

Por razones de mantenimiento no se mostrarán los resultados del total de expedientes abiertos en todos los organismos. Podrá consultar los expedientes abiertos de cada organismo haciendo click en su apartado.

Aquí tienes un resumen de los expedientes abiertos que tienes en los diferentes organismos. Si accedes a un organismo concreto puedes consultar el detalle y también acceder a los finalizados.

Administración General del Estado			
Agencia Española de Protección de Datos 0 	Agencia Tributaria 1 	Agricultura y Pesca, Alimentación y Medio Ambiente 0 	Defensa 0 

Monitoring of my activity with the Administration: files, notifications, ...

Know and access the data held by the administration and generation of my certificates

Know the use made of my data

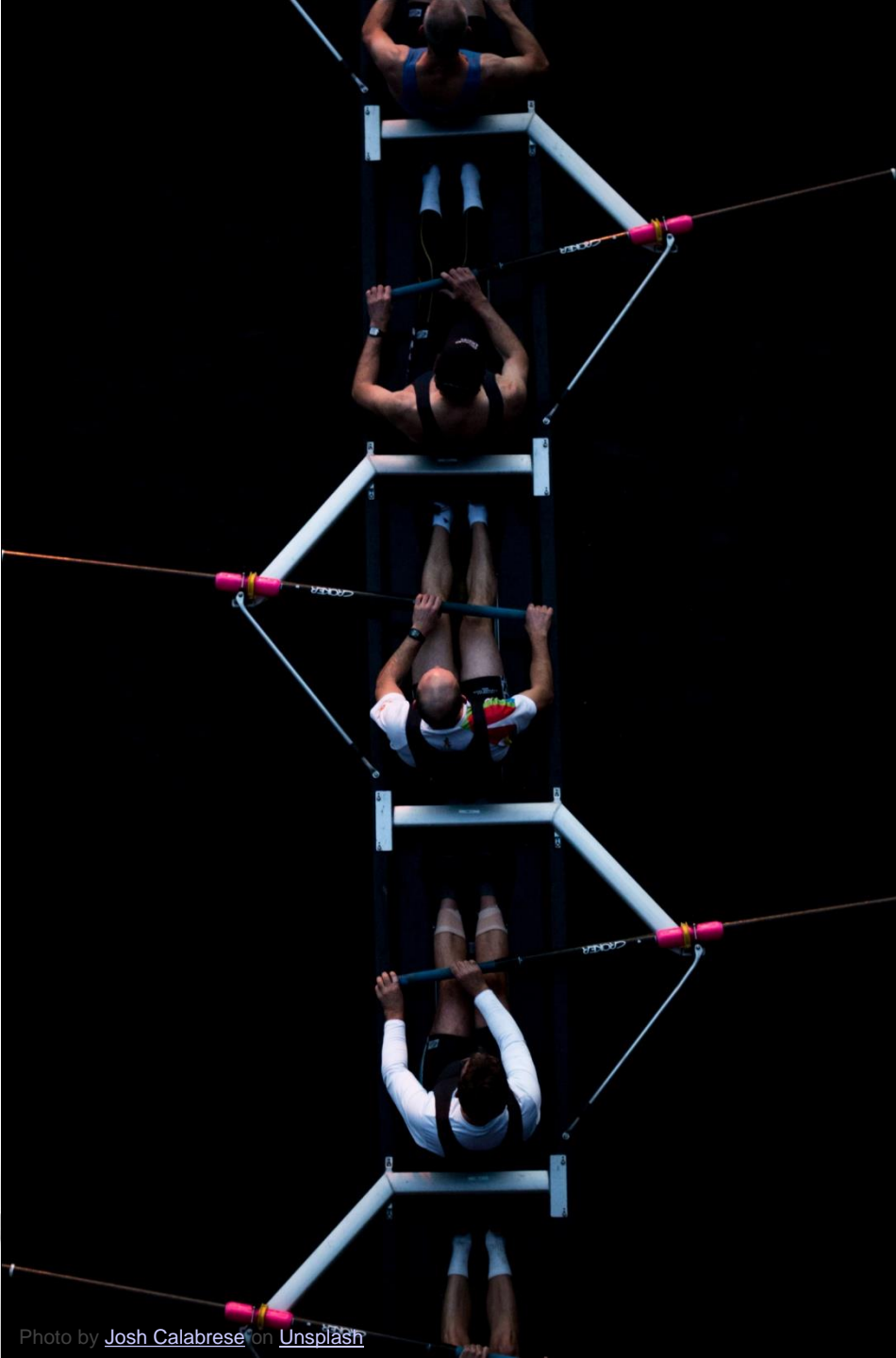


Photo by [Josh Calabrese](#) on [Unsplash](#)

Understanding:

1. The Public Sector in Spain
2. Digital Transformation
3. Legal Framework
4. Cooperation & Governance
5. Services
- 6. Challenges Ahead**

NUEVO

REGISTRY OF PRIMARY DATA



- Authentic or primary data
- Competent authorities of authentic data
- Authentic data access services
- Intermediary platforms
- Technical managers



Managers of public
procedures



Developers of
intermediation
services

NUEVO

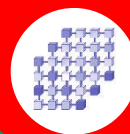
REGISTRY OF PRIMARY DATA



1. Identification of types of primary data

Identification, cataloging and description of the types of primary data relevant to an administrative procedure, as well as the identification and description of the access services for consultation and verification through an exchange platform

2. Creation of national primary data model



Creation, based on the types of data identified, of the national primary data model, which will reflect, in addition to the structure of these types of data, their location and interrelationships.



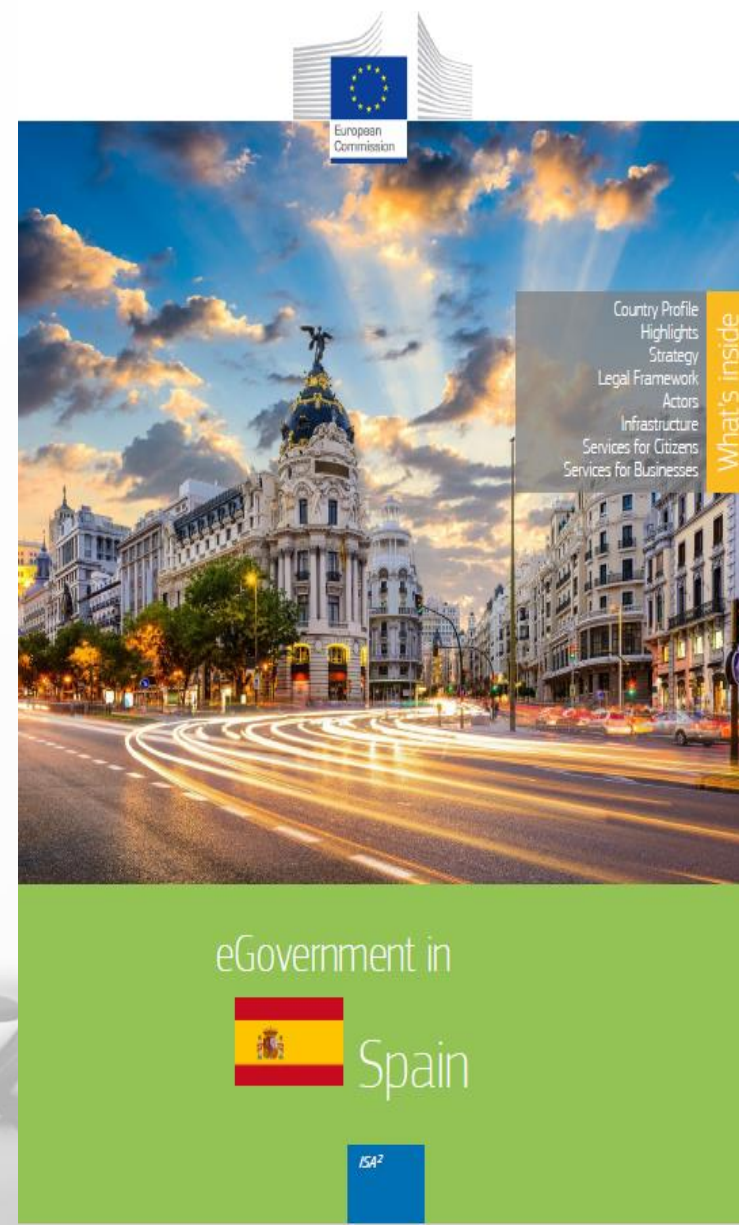
3. Standardize access services

Redesign of primary data access services to provide, for each type of primary data of the national model.

Many thanks for your attention

Gemma del Rey Almansa
Technical Advisor

General Secretariat for Digital Administration
Ministry of Territorial Policy and Public Function



Czech Republic

EU member since 2004

10.5 million inhabitants

14 regions

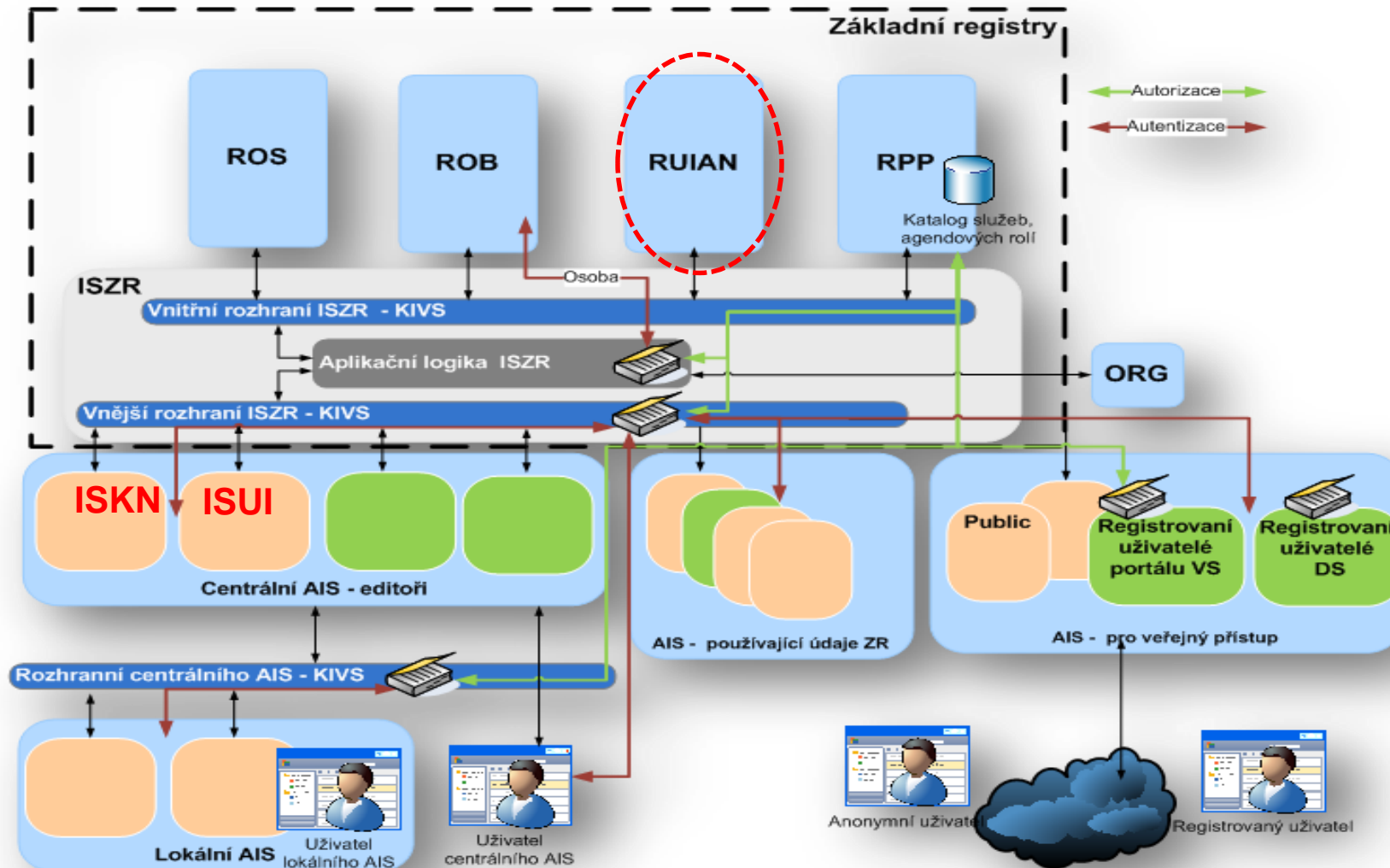
6249 municipalities

Base Registries:

- outlined by public administration reform in 1998 and
- supported by Smart Administration and Info Society strategies later
- defined by Act Nr 111/2009 on BRs
- **functional since 1st July 2012**
- BRs v2.0 in preparation in 2018



The Base Registries of Czech Public Administration / location data as an integral part of e-Government



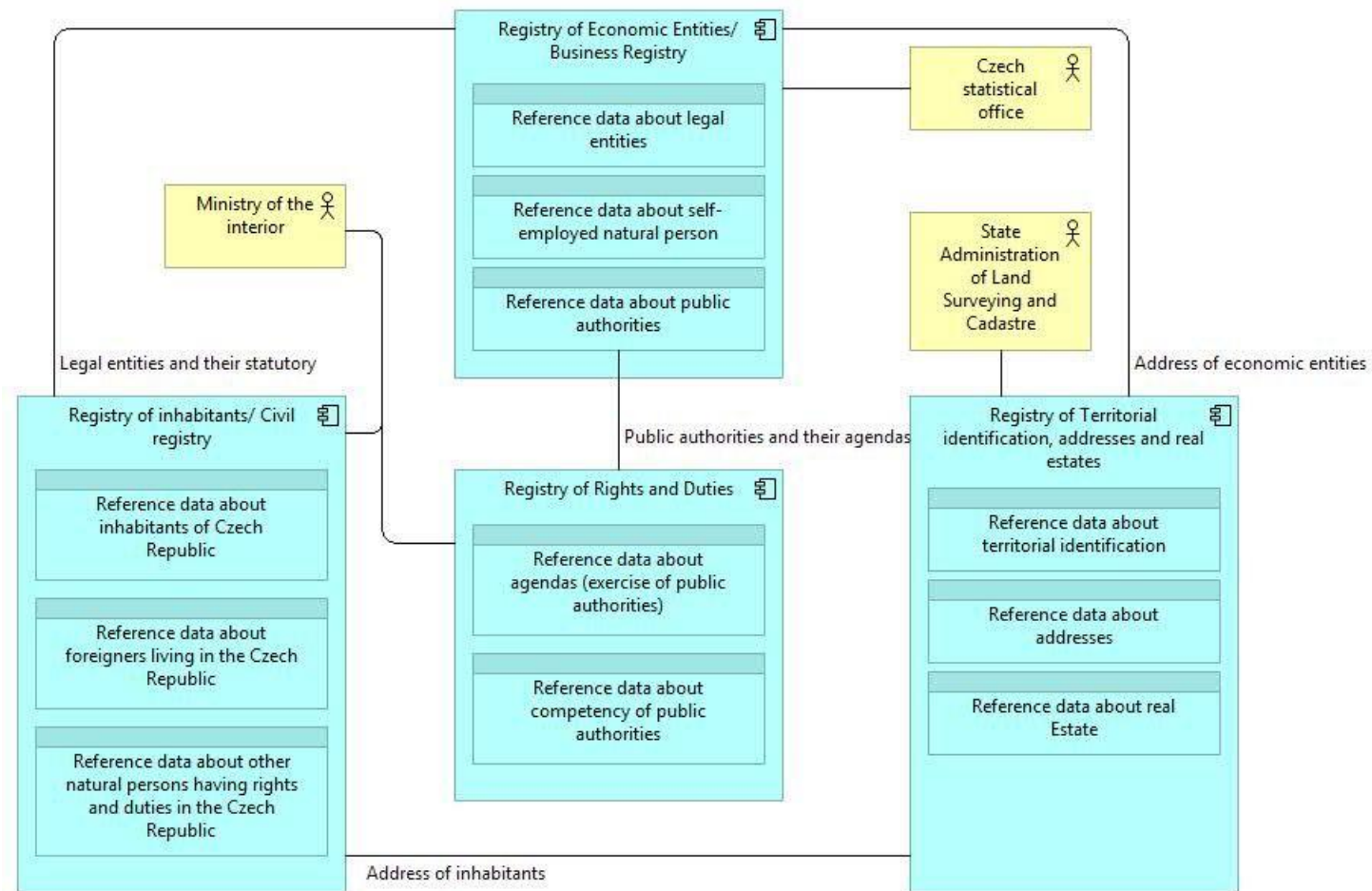
Czech Base Registries

Base Registry	Authority	Master Data
Registry of Natural Persons / Civil Registry (ROB)	Ministry of Interior	PERSONAL DATA (NATURAL PERSONS)
Registry of Economic Entities / Business Registry (ROS)	Czech Statistical Office (CSU)	LEGAL ENTITIES, INCL. BUSINESSES
Registry of Territorial Identification, Addresses and Real Estates (RUIAN)	Czech Office for Surveying, Mapping and Cadastre (CÚZK)	ADDRESSES, BUILDINGS, ADMINISTRATIVE UNITS, REAL ESTATE, RELATED GEOGRAPHIC NAMES, ELECTION DISTRICTS
Registry of Rights and Duties (RPP)	Ministry of Interior	LEGAL DOCUMENTS, PUBLIC ADMINISTRATION BODIES

The National Registries Authority provides organisational and technical support to public administrations, their system administrators and system developers. The National Registries Authority ensures proper interoperability between their registered systems and the four base registries, through the **Information System of Base Registries**.

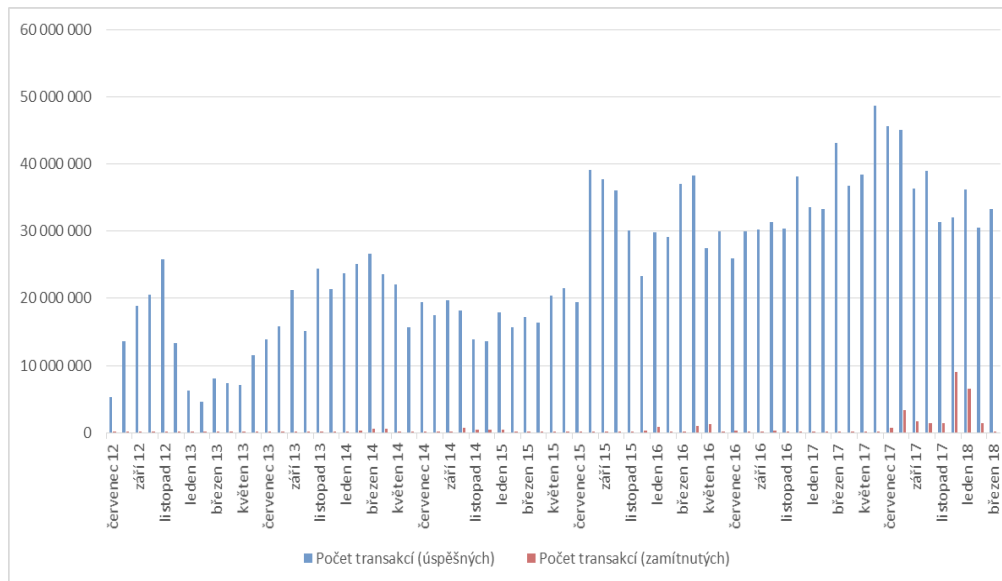
The **Office of personal data protection** (OPDP) is the administrator of the **System of Personal Identifiers** (ORG). The OPDP defines and manages all processes regarding the creation and changes in personal identifiers and it manages services for personal identifiers (AIFO) usage. This office has no rights to access information in base registries except for audit.

BRs - content and relations



Interconnected data fund

- All registered PA information systems (at the moment over 7500) are mandated to use the „reference“ (=master) data from Base Registries.
- Over 3500 systems communicate actively with Base Registers
- The remaining systems are not yet connected (typically small villages systems), however these are using the **CzechPoint** network to access the Base Registries and their data.
- Around 40 million transactions per month.





12 EIF principles for the EBRIF

Conceptual Model

12 EIF principles Categorized as core (addressed first) and additional (addressed at a later stage)

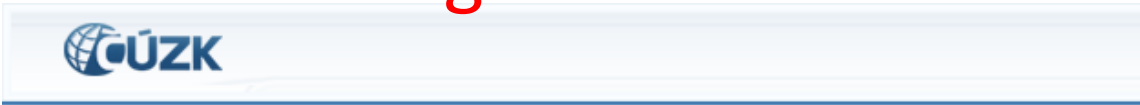


YES by Czech BRs

- *RUIAN location data published as OD and as interoperable INSPIRE services for cross-border use and re-use, but*
- *cross-border access to ROB, ROS, RPP are a challenge (law, AAA, multilingualism etc)*



RUIAN – open access to data for viewing and re-use



Vyhledání prvků

- ▶ [Stát](#)
- ▶ [Region soudržnosti](#)
- ▶ [Kraj \(VÚSC\)](#)
- ▶ [Okres](#)
- ▶ [ORP](#)
- ▶ [POU](#)
- ▶ [Obec, vojenský újezd](#)
- ▶ [Správní obvod Prahy](#)
- ▶ [Městská část/obvod](#)
- ▶ [Část obce](#)
- ▶ [Ulice](#)
- ▶ [Stavební objekt](#)
- ▶ [Adresní místo](#)
- ▶ [Katastrální území](#)
- ▶ [Parcela](#)
- ▶ [ZSJ](#)

Dřívější členění

- ▶ [Kraj \(1960\)](#)
- ▶ [Městský obvod Prahy](#)

[Ověření adresy](#)

[Výměnný formát](#)

[Zobrazení mapy](#)

Verze aplikace: 2.4.3
Verze DB: vdp-2_4_87_pe5

Výměnný formát

Platnost údajů: Platné Historické

Časový rozsah: Úplná kopie Přírůstky od data: 06.03.2012

Územní prvky: Stát až ZSJ Obec a podřazené

Datová sada: Základní Kompletní (+ lokalizační data, vlny)

Výběr z údajů: Základní údaje Základní + Gen. hranice Základní + Gen. hranice + ZSJ

Územní omezení: Všechny obce Jedna obec (kód):

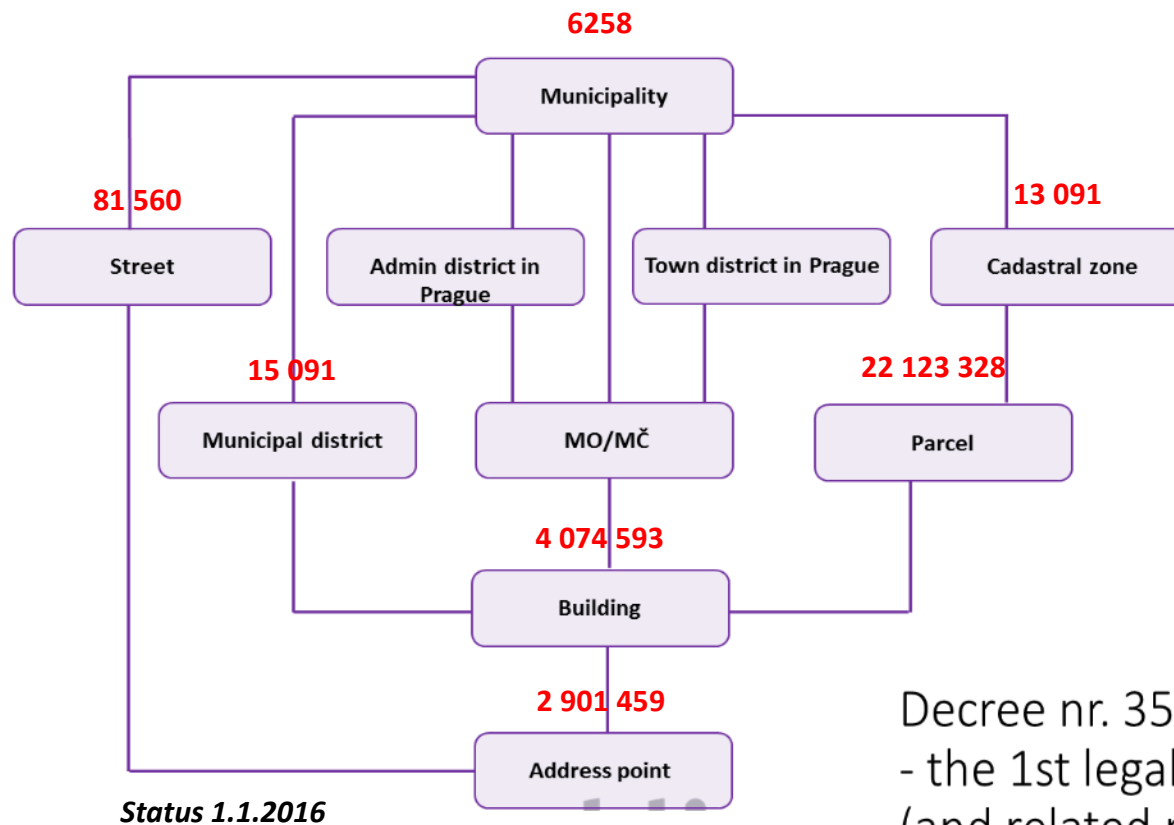
Obec	Platnost údajů	Časový rozsah	Datová sada	Územní prvky	Výběr z údajů	Název souboru	Download
530042	Platné	Úplná kopie	Kompletní	Obec a podřazené	Zákl+Orig. hran	20120122_OB_530042_U	
509388	Platné	Úplná kopie	Kompletní	Obec a podřazené	Zákl+Orig. hran	20120122_OB_509388_U	
530085	Platné	Úplná kopie	Kompletní	Obec a podřazené	Zákl+Orig. hran	20120122_OB_530085_U	
513148	Platné	Úplná kopie	Kompletní	Obec a podřazené	Zákl+Orig. hran	20120122_OB_513148_U	
503410	Platné	Úplná kopie	Kompletní	Obec a podřazené	Zákl+Orig. hran	20120122_OB_503410_U	
506664	Platné	Úplná kopie	Kompletní	Obec a podřazené	Zákl+Orig. hran	20120122_OB_506664_U	

Veřejný dálkový přístup
k datům registru územní identifikace, adres a nemovitostí

INTEGROVANÝ OPERAČNÍ PROGRAM
EVROPSKÁ UNIE
EVROPSKÝ FOND PRO REGIONÁLNÍ ROZVOJ
SÁNĚ PRO VÁŠ ROZVOJ

Projekt: "Výbudování Registru územní identifikace, adres a nemovitostí a modernizace inf. je spolufinancován z prostředků evropské unie, Evropského fondu pro regionální rozvoj."

RUIAN sample - ADDRESSES



The up-to-date address published via RUIAN is a mosaic of features and attributes maintained by subject competent editors (cca 7000) in a distributed through manner in accord with:

Decree nr. 359/111 on RUIAN Base Register - the 1st legal rule for specifying addresses (and related roles)



Eliščino nábřeží 375/1
Věkoše
50003 Hradec Králové

OOP in practice:

up-to-date authoritative local data are via BRs / RUIAN
an interoperable part of the European Spatial Data Infrastructure

The screenshot shows a web application interface for a spatial data service. On the left, there is a navigation sidebar with options like SEARCH, MAP LAYERS, and MY DATA. The main area displays a map of a residential area with buildings and streets. A 'Feature Data' popup window is open, showing detailed metadata for a selected building. The metadata includes fields such as currentUse, natianness, number of floors, height, and construction date, along with various URIs for external references and reasons.

Field	Value
currentUse_title	2004-10-20T00:00:00
natianness_href	CollectiveResidence
numberOfFloorsAboveGround_nilReason	numberOfFloorsAboveGround_nilReason.0 http://inspire.ec.europa.eu/codelists/NativenessValue/endoronym numberOfFloorsAboveGround_nilReason.1 http://inspire.ec.europa.eu/codelists/NativenessValue/endoronym numberOfFloorsAboveGround_nilReason.2 http://inspire.ec.europa.eu/codelists/NativenessValue/endoronym
heightAboveGround_nilReason	http://inspire.ec.europa.eu/codelists/VoidReasonValue/Unpopulated
floorDistribution_nilReason	http://inspire.ec.europa.eu/codelists/VoidReasonValue/Unpopulated
SpellingOfName_text	http://inspire.ec.europa.eu/codelists/VoidReasonValue/Unpopulated
id	numberOfFloorsAboveGround_nilReason.0 http://inspire.ec.europa.eu/codelists/NativenessValue/endoronym numberOfFloorsAboveGround_nilReason.1 http://inspire.ec.europa.eu/codelists/NativenessValue/endoronym numberOfFloorsAboveGround_nilReason.2 http://inspire.ec.europa.eu/codelists/NativenessValue/endoronym
id.0	č.p. 1259
id.1	Praha
id.2	Košíře
dateOfConstruction_nilReason	https://security.locationframework.eu/wss/service/CZ-BU/httpsauth?service=WFS&VERSION=2.0.0&request=GetFeature&StoredQuery_id=urn:ogc:def:query:OGC-WFS:GetFeatureById&id=BP.10463076.3576435
beginLifespanVersion	2015-10-09T15:14:27
elevation_nilReason	http://inspire.ec.europa.eu/codelists/VoidReasonValue/Unpopulated
percentage_nilReason	http://inspire.ec.europa.eu/codelists/VoidReasonValue/Unknown
officialValue_nilReason	http://inspire.ec.europa.eu/codelists/VoidReasonValue/Unpopulated
ExternalReference_informationSystem	numberOfFloorsAboveGround_nilReason.0 http://inspire.ec.europa.eu/codelists/NativenessValue/endoronym numberOfFloorsAboveGround_nilReason.1 http://inspire.ec.europa.eu/codelists/NativenessValue/endoronym numberOfFloorsAboveGround_nilReason.2 http://inspire.ec.europa.eu/codelists/NativenessValue/endoronym
id.0	č.p. 1259
id.1	Praha
id.2	Košíře
ExternalReference_informationSystem.0	http://vdp.cuzk.cz/
ExternalReference_informationSystem.1	http://mahizenidokn.cuzk.cz/
conditionOfConstruction_href	http://inspire.ec.europa.eu/codelists/ConditionOfConstructionValue/functional/functional.en.xml
buildingNature_nilReason	http://inspire.ec.europa.eu/codelists/VoidReasonValue/Unknown
nameStatus_href	numberOfFloorsAboveGround_nilReason.0 http://inspire.ec.europa.eu/codelists/NativenessValue/endoronym numberOfFloorsAboveGround_nilReason.1 http://inspire.ec.europa.eu/codelists/NativenessValue/endoronym numberOfFloorsAboveGround_nilReason.2 http://inspire.ec.europa.eu/codelists/NativenessValue/endoronym
id.0	č.p. 1259
id.1	Praha
id.2	Košíře
ExternalReference_informationSystem.0	http://vdp.cuzk.cz/
ExternalReference_informationSystem.1	http://mahizenidokn.cuzk.cz/
nameStatus_href.0	http://inspire.ec.europa.eu/codelists/NativenessValue/official
nameStatus_href.1	http://inspire.ec.europa.eu/codelists/NativenessValue/official
nameStatus_href.2	http://inspire.ec.europa.eu/codelists/NativenessValue/official
horizontalGeometryRefer	http://inspire.ec.europa.eu/codelists/VoidReasonValue/footPrint/footPrint.en.xml



Thank you for your attention

Eva.Pauknerova@cuzk.cz





AGENDA



INTRODUCTION



THE EUROPEAN REGISTRY OF BASE REGISTRIES



THE ONCE ONLY PRINCIPLE (TOOP)



MEMBER STATES PRESENTATIONS



Q&A – OPEN DISCUSSION

- European vision and European Interoperability Platform
- How potential ERBR could look like?
- Other workshop participants' experiences
- Any other questions/comments/suggestions

Feel free to raise your hand on webex (right corner functions next to your name) to ask for the turn to speak.



**Thank you
for your attention**

ERBR working group



ISA² programme

You click, we link.

<http://ec.europa.eu/isa>

ISA@ec.europa.eu

[@EU_ISA2](https://twitter.com/EU_ISA2)

Unit D2

Directorate-General for Informatics
European Commission, Brussels 

everis Brussels

Transformation is an attitude.

<https://www.everis.com/belgium>

ABR@everis.com

Rue de Spa 8
1000 Brussels, Belgium
+32 2 788 52 52

ABR Community Page

<https://joinup.ec.europa.eu/collection/access-base-registries>

Join us on JoinUp!