



22 MARCH
2024



Multidisciplinary teams as an enabler for digital-ready policies

March 2024 BLSI Virtual Breakfast

interoperable
europe

Agenda

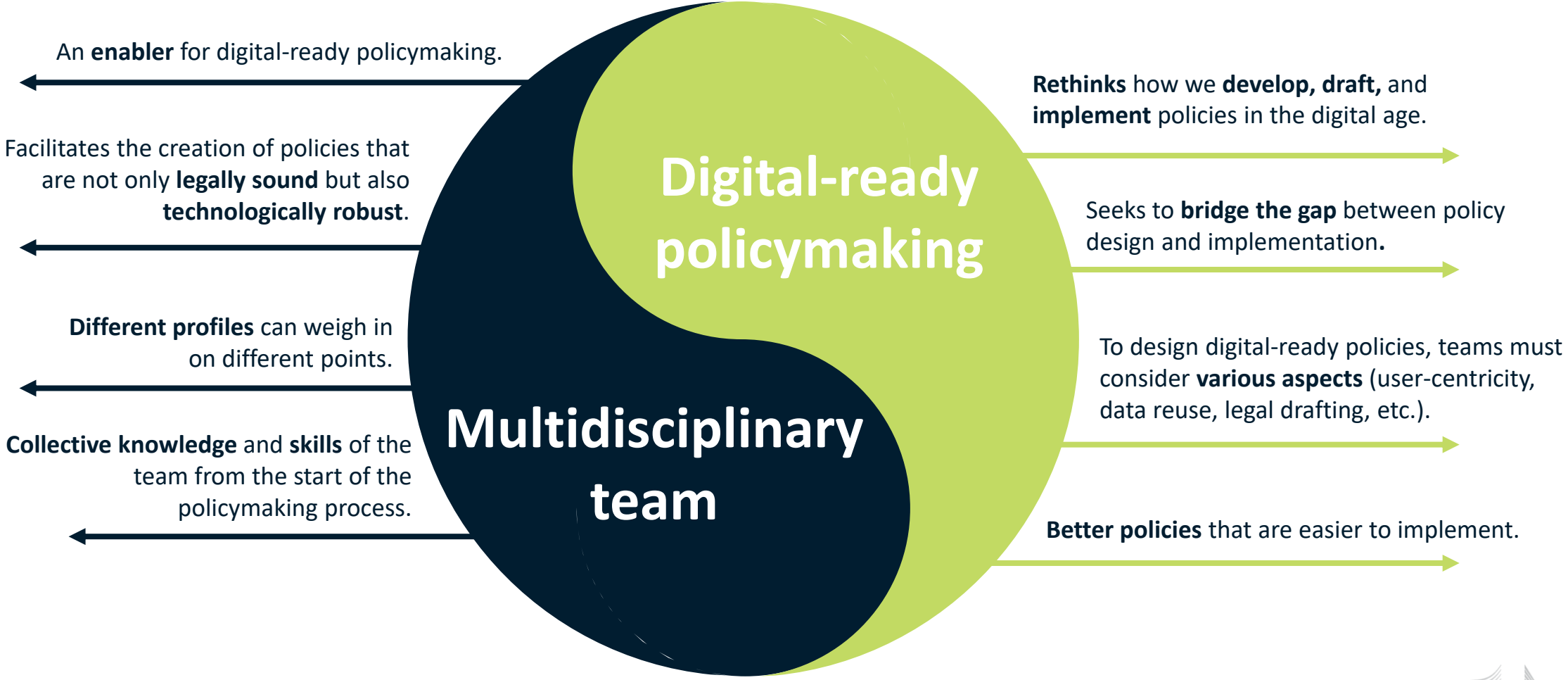
- 01** | **Welcome and introduction**
Ewa Cyzio,
European Commission, DG DIGIT
- 02** | **Preparing multidisciplinary teams for innovative tasks**
Professor Min Tang,
University of Applied Management
- 03** | **Multidisciplinary teams in the European Commission**
Athanasios Karalopoulos,
European Commission, DG GROW
- 04** | **Multidisciplinary teams in French public administration**
Thomas Guillet,
beta.gouv.fr
- 05** | **Q&A**
- 06** | **Conclusions**
Ewa Cyzio,
European Commission, DG DIGIT



Welcome and introduction

Ewa Cyzio,
European Commission, DG DIGIT B2

Context





Preparing multidisciplinary teams for innovative tasks

Professor Min Tang,
University of Applied
Management, Germany



Multidisciplinary teams in the European Commission

Athanasios Karalopoulos,
European Commission, DG GROW G3



Regulation of data collection and sharing relating to short-term accommodation rental (STR) services

Multidisciplinary teams as an enabler for digital-ready policies, 22 March 2024

*Athanasios Karalopoulos
Digital transformation of industry
DG GROW, European Commission*

Context



- Short-term accommodation rentals (STRs) represent nearly one quarter of the total EU supply of tourist accommodation.
- Market growth is boosted by the emergence of online platforms like Airbnb, Booking and Expedia.
- STRs create benefits and opportunities for guests, hosts, local communities and the overall tourism ecosystem, but they are also a source of concern.
- STRs are therefore increasingly regulated at national, regional and local level to enhance the transparency of STRs by:
 - Introducing registration requirements for hosts
 - Requesting online platforms to share data on hosts and their activities

Goals of the new Regulation



To address these issues the Proposal's main objectives are to **harmonise** and improve the framework for data generation and data sharing on STRs across the European Union, and to enhance **transparency** in the STR sector.

Agreed measures



1

Common rules

- for **registration** and identification of hosts and their properties
- for **reporting & exchange of data** between online platforms and public authorities
- Applicable in EU countries that want to receive activity data from platforms (opt-in)

2

Data transmission

- Single digital entry point (SDEP) operated at national level enables data transmission from platforms to competent authorities
- Standardized sets of registration and activity data

3

Increased Validation Checks

- Random checks on host information and registration numbers
- Authorities: suspension of registration numbers, removal of illegal listing, penalties for non-compliant platforms or hosts

EC STR team: mission & main characteristics



EU policy making cycle

STR Regulation case:

- Public consultation: 6m
- Impact assessment: 6m
- Proposal: 6m
- Negotiations: >1y

EC STR team:

- Diverse profiles
- Long duration
- Varying level of involvement per profile

Types of diversity in the EC STR team

Functional

- Policy officers
- Legal officers
- Digital experts
- Economists
- Statisticians

- Policy domains
(single market, tourism, digital services)
- Academic background

- Staff
- Middle/senior management
- Permanent & temporary

Demographic

- Female
- Male

- All age groups
(from <30 up to 50+)

- Many nationalities

Psychological

- Thinking style
- Personality
- Attitude
- Value
- Motivation
 - To solve the problem
 - To estimate the impact
(economic, social, environmental etc.)
 - To protect certain types of stakeholders (e.g. SMEs, small platforms)
 - To provide a service
 - To ensure quality

STR multidisciplinary team – challenges

Challenges:

- Terminology (higher expertise → frequent use of jargon)
- Need to work collectively and not independently (so as an interdisciplinary team!)
- Lack of understanding / underestimation of complexity
- Conflicts (due to communication gaps and frustration)
- Differences in the prioritisation (e.g. if resources belong to different units)
- No back-up per functional profile → dependencies → delays
- Discrimination

STR multidisciplinary team – benefits

Benefits:

- Consideration of many different aspects (e.g. legal, economic, technological, competitiveness, future proofness etc.)
- Challenges (incl. implementation-related ones) were early identified
- Increased quality delivered in all steps of the policy making cycle
- Easier to address domain or country specific issues
- Acknowledge the value of diversity

STR multidisciplinary team – lessons learnt

Lessons learnt:

- Collaboration & communication are of paramount importance!!!!
- Development of team spirit
- The role of the team coordinator / leader is key
- Openness to learn



Multidisciplinary teams in French public administration

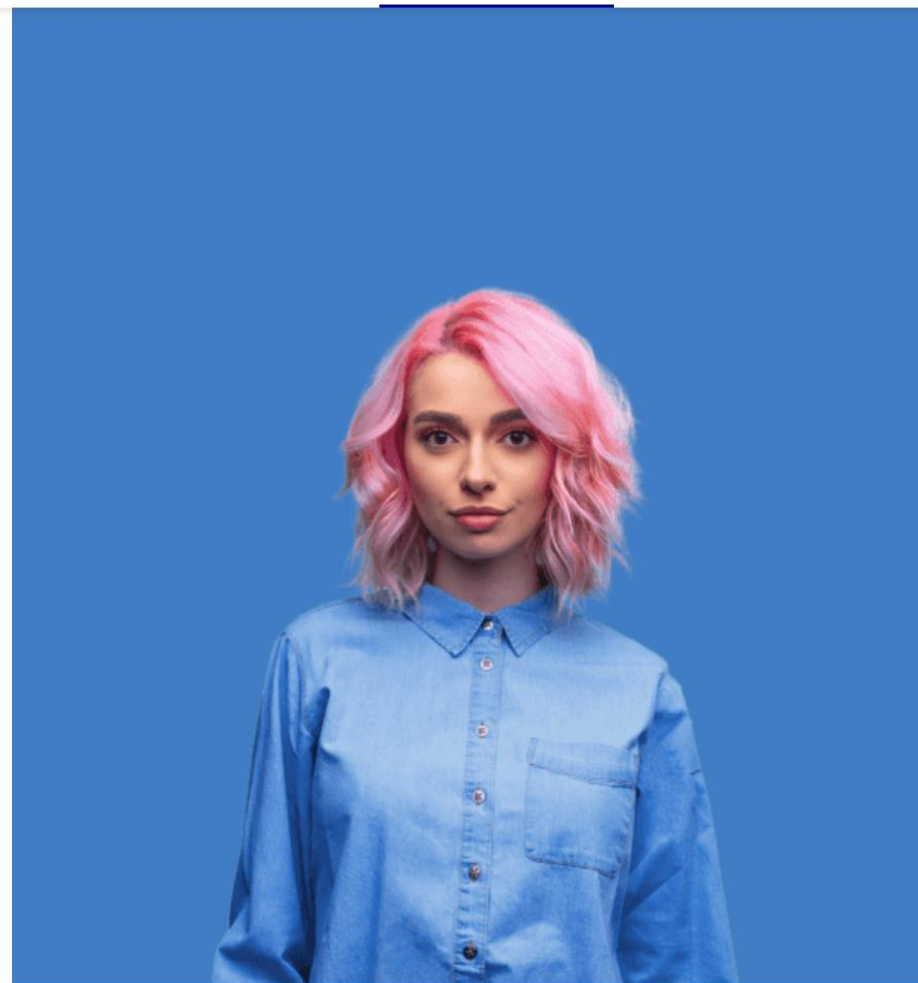
Thomas Guillet,
beta.gouv.fr

Évaluez vos droits à 897 aides en moins de 5 minutes.

Avant de démarrer la simulation de vos aides, pensez à vous munir de vos ressources et de celles de vos parents si vous êtes encore à leur charge.

Je commence

[Accéder à la liste complète des aides](#)



[Accueil](#)

[Offres](#) ▾

[Formations et orientation](#) ▾

[Engagement](#) ▾

[Logement](#) ▾

[Accompagnement](#) ▾

[Aides et outils](#) ▾

[Je suis employeur](#) ▾

[Ma simulation](#)

Mon profil

[Mon foyer](#)

[Mon logement](#)

[Mes revenus](#)

[Mes projets](#)

Mon profil

[Je donne mon avis](#) ↗

Quelle est votre date de naissance ?

jour

mois

année

JJ

MM

AAAA

[← Précédent](#)

[Suivant](#)



[Accueil](#)

[Offres](#) ▾

[Formations et orientation](#) ▾

[Engagement](#) ▾

[Logement](#) ▾

[Accompagnement](#) ▾

[Aides et outils](#) ▾

[Je suis employeur](#) ▾

[Ma simulation](#)

[Mon profil](#)

[Mon foyer](#)

[Mon logement](#)

[Mes revenus](#)

[Mes projets](#)

[Récapitulatif](#)

Mon profil

[Je donne mon avis](#) ↗

Quelle est votre nationalité ?

Française

Européenne

Non européenne

[← Précédent](#)

[Suivant](#)



Ma simulation

Mon profil

Mon foyer

Mon logement

Mes revenus

Mes projets

[Modifier ma simulation](#)

Mes résultats

[Recevoir les résultats par email/SMS](#)

D'après la situation que vous avez décrite, vous êtes a priori éligible à ces aides. Ces résultats sont fondés sur les seules informations que vous avez indiquées et ne constituent en aucune façon un engagement de la part des organismes cités. Les montants avancés sont arrondis à une dizaine d'euros près :



Aides au logement

Caisse d'allocations familiales

Les aides au logement regroupent trois aides différentes non cumulables : l'aide personnalisée au logement (Apl), l'allocation de logement familiale (Alf) et l'allocation de logement sociale (Als). Elles concernent les personnes ayant de faibles ressources, locataires ou remboursant le prêt de leur résidence principale. Elles sont versées par la Caf ou la MSA.

Montant estimé

360 € / mois

[Demander cette aide](#)



Prime d'activité

Montant estimé



The most widely adopted free and open-source engine to write rules as code

Government departments, lawmakers and civil society finally share a common language to debate and activate social and fiscal policies: OpenFisca enables collaboratively modelling laws and regulations and making them computable over open APIs for developers, datascientists and researchers.



Rules as Code enables “better policy outcomes and enhanced service delivery”



Edge of Government Innovation Award 2023



Most Innovative Open-Source Software Award 2019



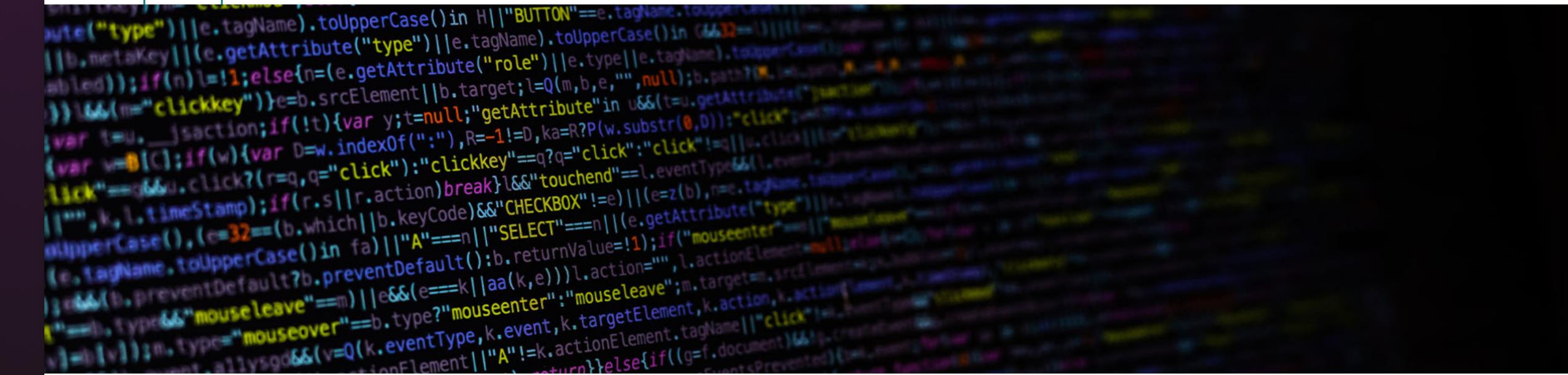
Recognised as Digital Public Good by UNDP, UNICEF and Norad



Cracking the Code: Rulemaking for humans and machines

Published on 12 October 2020

Emerging Tech Global Trends



On this page:

The global context

Trend 1: New forms of accountability

Trend 2: New approaches to care

Trend 3: Preserving identities and strengthening equity

Trend 4: New ways of engaging citizens and residents

Conclusion

Download report

Share this page

teams, to accelerate the RaC movement. Like the efforts discussed earlier in this trend, such approaches should be done in a way that is consistent with the [OECD AI Principles](#) and other applicable frameworks.

However, RaC is not a cure-all when it comes to putting in place good rulemaking practices and ensuring positive regulatory outcomes. For instance, the effects of a single regulation or rule may be dependent on a range of external factors, and its scope is currently best applied to relatively straightforward legal provisions. Yet, OPSI believes that Rules as Code has the potential to be truly transformative. In addition to OPSI's RaC primer, innovators wanting to learn more can leverage the Australian Society for Computers and Law (AUSCL)'s excellent and free series of [Masterclass sessions](#). Those who want to start digging into the models and code can check out [OpenFisca](#), the free and open source (FOSS) software powering many RaC projects around the world, and [Blawx](#). Interesting personal perspectives can also be found on blogs by [Hamish Fraser](#) and [Regan Meloche](#).

The Internet of (Transparent) Things

Smart devices and the Internet of Things (IoT) have become pervasive, yet in some ways remain invisible. There are over 11 billion IoT connected devices around the world, with more than 29 billion expected by 2030 as 5G technology continues to roll out (Transforma Insights, 2022). The potential

Ma simulation

Mon profil

Mon foyer

Mon logement

Mes revenus

Mes projets

Modifier ma simulation


Mes résultats

Recevoir les résultats par email/SMS

D'après la situation que vous avez décrite, vous êtes a priori éligible à ces aides. Ces résultats sont fondés sur les seules informations que vous avez indiquées et ne constituent en aucune façon un engagement de la part des organismes cités. Les montants avancés sont arrondis à une dizaine d'euros près :

 **Aides au logement** Montant estimé
360 € / mois
Caisse d'allocations familiales
Les aides au logement regroupent trois aides différentes non cumulables : l'aide personnalisée au logement (Apl), l'allocation de logement familiale (Alf) et l'allocation de logement sociale (Als). Elles concernent les personnes ayant de faibles ressources, locataires ou remboursant le prêt de leur résidence principale. Elles sont versées par la Caf ou la MSA.

[Demander cette aide](#)

 **Prime d'activité** Montant estimé
351 € / mois
Caisse d'allocations familiales
La prime d'activité complète les revenus d'activité professionnelle des travailleurs de 18 ans ou plus, des étudiants salariés et apprentis et des non-salariés. La demande peut se faire à travers un téléservice sur, selon votre cas, le site de la Caf ou de la MSA. Elle remplace le RSA activité et la prime pour l'emploi depuis 2016.

[Demander cette aide](#)

 **Complémentaire santé solidaire** Coût estimé
16 € / mois
Assurance maladie
La Complémentaire Santé Solidaire (anciennement CMU-C et ACS) est une mutuelle qui rembourse la part de vos dépenses de santé qui n'est pas prise en charge par l'Assurance Maladie.

[Demander cette aide](#)

 **Allocation de soutien familial** Montant estimé
180 € / mois
Caisse d'allocations familiales
L'allocation de soutien familial (ASF) est destinée soit au parent qui élève seul un enfant non reconnu, privé de l'aide d'un parent ou dont l'autre parent est décédé, soit à la personne seule ou en couple qui recueille un enfant. L'ASF est versée par la Caf ou la MSA tous les mois.

[Demander cette aide](#)

Retour à l'accueil du simulateur

Recevoir les résultats par email/SMS

avez décrite, vous êtes a priori éligible à ces aides. Ces résultats sont
ions que vous avez indiquées et ne constituent en aucune façon un
rganismes cités. Les montants avancés sont arrondis à une dizaine

ement

ons familiales

logement regroupent trois aides différentes non
ide personnalisée au logement (Apl), l'allocation de
ale (Alf) et l'allocation de logement sociale (Als). Elles
personnes ayant de faibles ressources, locataires ou
prêt de leur résidence principale. Elles sont versées par

Montant estimé
360 € / mois

Demander cette aide

ité

Montant estimé





Focus: Uniformization of price-cap policies across public services in the city of Strasbourg

Uniformization of price-cap policies across public services in the city of Strasbourg

- React out people that need price-caps the most
- Better public money allocation
- Four departments: Public transport, school, culture, sports
- Rely on new technologies to simplify policy access

Context



A 3-person team

A.M: with institution network, sponsorship and domain knowledge but limited time

O: with local sociodemographic knowledge data-manipulation skills but limited time

T: with domain knowledge, rules as code expertise and time



Project started in June 2023 with a restitution late August 2023



Data-driven budget evaluation & reduced-price policies for each domain

The plan

	Current Reduced-price policies	Target
Transport	CAF indicator, CROUS indicator & dedicated criteria (1)	UNIFORM SET OF RULES
School related	CAF indicator	
Music & dance	Fiscal indicator & dedicated criteria (2)	
Sports	CAF indicator, student & dedicated criteria (3)	



CAF: *Caisse des Allocations Familiales*
Family focused organization

CROUS: *Centre régional des œuvres universitaires et scolaires*
Organization in charge of students



Goal: rely on fiscal data to benefit from a broader coverage on the population

Snapshot as of August 2023

- Data reception mid-August
- Wrong hypothesis on the data
- Adaptation to this discovery with some promising early results
- Need of another iteration, with a new deadline in late October

A 3+5-person team



Addition of 5 context & domain specific experts
with institution knowledge & political network



By the end of October

Better understanding of domain specific operational constraints

Domain specific pricing adjustments

Political involvement

Exclusion of transport given the financial impact



Official deliberation last Monday March 18th applicable from July 2024

Project takeaway



Small impact focus multidisciplinary team



Shorter feedback, incremental improvements' loops

Design hypothesis, test, analyze and reiterate



Appropriate tools and methodologies in the digital age (lean startup)

Capitalize on each person strengths



Resource pulling internally and externally of the team

Knowledge, sponsoring, arbitrage...

Broader experiences with transdisciplinary team



Small autonomous transdisciplinary team



Small *sponsored* autonomous *impact focus* transdisciplinary team



Small sponsored *self-reflective* autonomous impact focus transdisciplinary team

How to start?



Pairs are valuable transdisciplinary teams



Time



Specific problem



Sponsorship



Top level management



Setup an internal call for expression of interest to start solving specific problems!

A large, dark blue circular graphic containing a complex network graph. The graph consists of numerous nodes connected by thin lines, with nodes colored in shades of yellow, green, and blue. The overall shape of the graphic is a large, rounded rectangle.

Thanks

thomas.guillet@beta.gouv.fr

Q&A session



Conclusions and Next steps

Ewa Cyzio,
European Commission, DG DIGIT B2

BLSI community



Share your feedback!

- [Fill in this 5-question survey](#)



Stay tuned for the upcoming:

- [Interoperable Europe Academy 11-12/04](#)
- [SEMIC 2024](#)



Latest news:

- [Issue paper: Translating regulatory reporting principles into actions](#)
- [E-learning on Law as Code](#)



Stay informed:

[Subscribe to the IOP newsletter](#) to stay tuned on what is coming and [become a member](#) of our community!



#BLSI = Better legislation for smoother implementation

Join us on [JoinUp!](#)

The background features a complex, symmetrical pattern of glowing green and blue lines and particles. The lines form a central, diamond-like shape that tapers towards the left and right edges. The particles are scattered throughout, creating a sense of depth and movement. The overall color palette is dominated by dark blue, with vibrant green and blue highlights.

Thank you



interoperable europe

innovation ∞ govtech ∞ community

Stay in touch



[\(@InteroperableEU\) / Twitter](#)



[Interoperable Europe - YouTube](#)



[Interoperable Europe | LinkedIn](#)



DIGIT-INTEROPERABILITY@ec.europa.eu



<https://joinup.ec.europa.eu/collection/interoperable-europe/interoperable-europe>