



## **ELISE**

**European**

**Location**

**Interoperability**

**Solutions for**

**E-Government**

**Energy & Location webinar  
INSPIRE 2020 Online Conference**

05.06.2020

Prediction of the heating energy demand in European Cities using 3D City Models



***Authors:***  
***Prof. Dr.-Ing. Volker Coors***  
***Matthias Fitzky***

Hochschule  
für Technik  
Stuttgart



ELISE Energy & Location Applications

# Motivation

## General EU-wide goal:

→ **Establish Strategies to Reduce CO2 Emissions**

This includes:

- Reduce Heating Energy Demand of Buildings

Our Approach:

- Method to predict heating energy demand on urban level
  - Simulation that calculates energy performance certificates and incorporates renovation scenarios

# Actions in the Energy and Location Pilot Project:

- Development of a Heating Energy Demand prediction method based on 3D City Models
- Validation in Different Test Areas
- Comparison of different Energy Labelling Methods

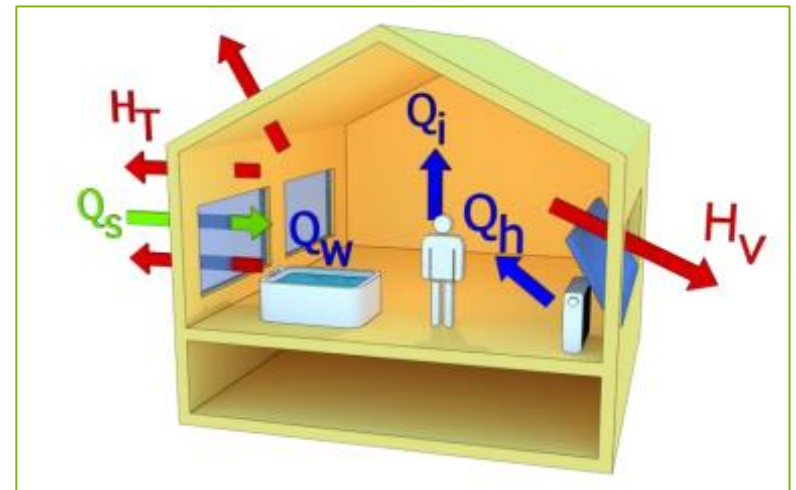
# Methodology using Simstadt

## Simstadt:

- Predicts Energy demand based on DIN V 18599
- Output: Monthly Energy Balance per Building
- Year Of Construction and Function has to be given

## Labelling Methods

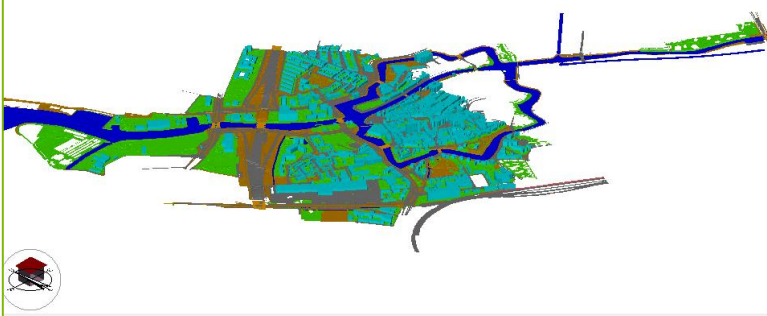
- In Germany labels based on Energy Demand
- In Netherlands based on Building type and year of construction



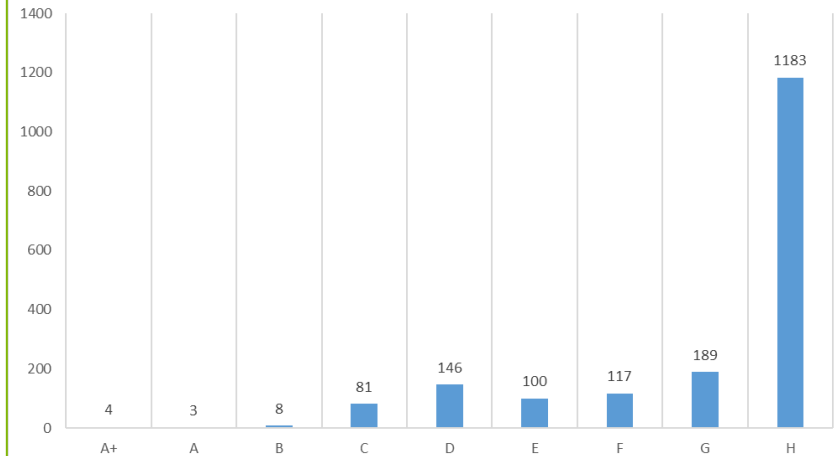
# Test Area Zwolle, NL

- Provided by Dutch Cadastre Authority
- Semantic transformation of input information has to be done
- Accuracy can be increased with NL Specific parameters

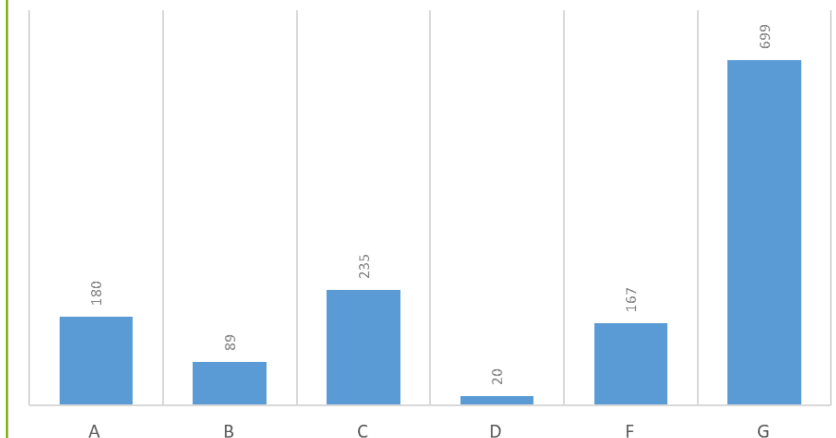
Dataset (1923 Buildings):



NUMBER OF BUILDINGS PER "ENERGIEAUSWEIS"- LABEL - CALCULATION VIA SIMSTADT



DISTRIBUTION OF THE ENERGY LABELS ACCORDING TO THE METHOD OF THE DUTCH CADASTRE AUTHORITY



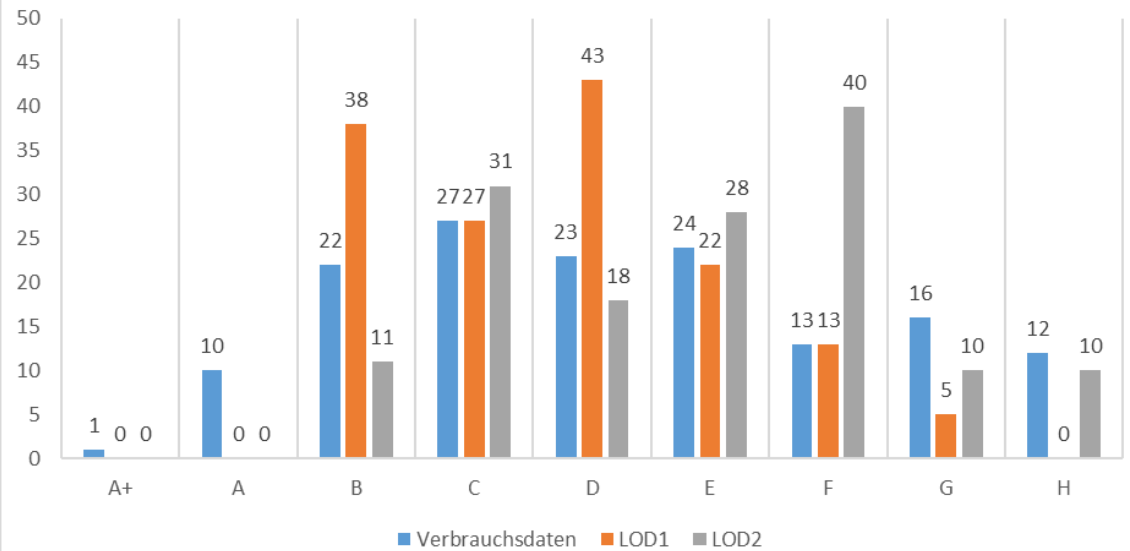
# Test Area Essen, DE

- Given In LOD1 and LOD2

Dataset  
LOD2 (323  
Buildings):



Comparison Labels Consumption data and Simstadt results of  
LOD1 and LOD2



# Conclusions

- Prediction of Energy demand possible
  - Successful adaptation of the methodology to different Situations in Member states
  - INSPIRE-Directive helps with standardized input information
- Labelling Methods difficult to compare
  - Different amount of Labels
  - Designed for different Building stocks/Different Construction patterns



European  
Commission



**Questions?**





# ISA<sup>2</sup> programme

*You click, we link.*

## Stay in touch

[ec.europa.eu/isa2](http://ec.europa.eu/isa2)

[ec.europa.eu/isa2/actions/improving-cross-border-exchange-location-information\\_en](http://ec.europa.eu/isa2/actions/improving-cross-border-exchange-location-information_en)



[@EU\\_isa2](https://twitter.com/EU_isa2)  
[@EULocation](https://twitter.com/EULocation)



[isa@ec.europa.eu](mailto:isa@ec.europa.eu)  
[EU-LOCATION@ec.europa.eu](mailto:EU-LOCATION@ec.europa.eu)

Run by the ISA Unit at DIGIT (European Commission) with 131€M budget, the [ISA<sup>2</sup> programme](#) provides public administrations, businesses and citizens with specifications and standards, software and services to reduce administrative burdens.